



National Public Works Week

- Recognition of Public Works Week
- Recognition of Public Works Employees as First Responders





APWA NATIONAL PUBLIC WORKS WEEK

Since 1960, American Public Works Association (APWA) has sponsored National Public Works Week. Across North America, our more than 32,000 members in the US and Canada use this week to energize and educate the public on the importance of public works to their daily lives: planning, building, managing and operating at the heart of their local communities to improve everyday quality of life.



THIS YEAR'S THEME





NATIONAL PUBLIC WORKS WEEK ACTIVITIES

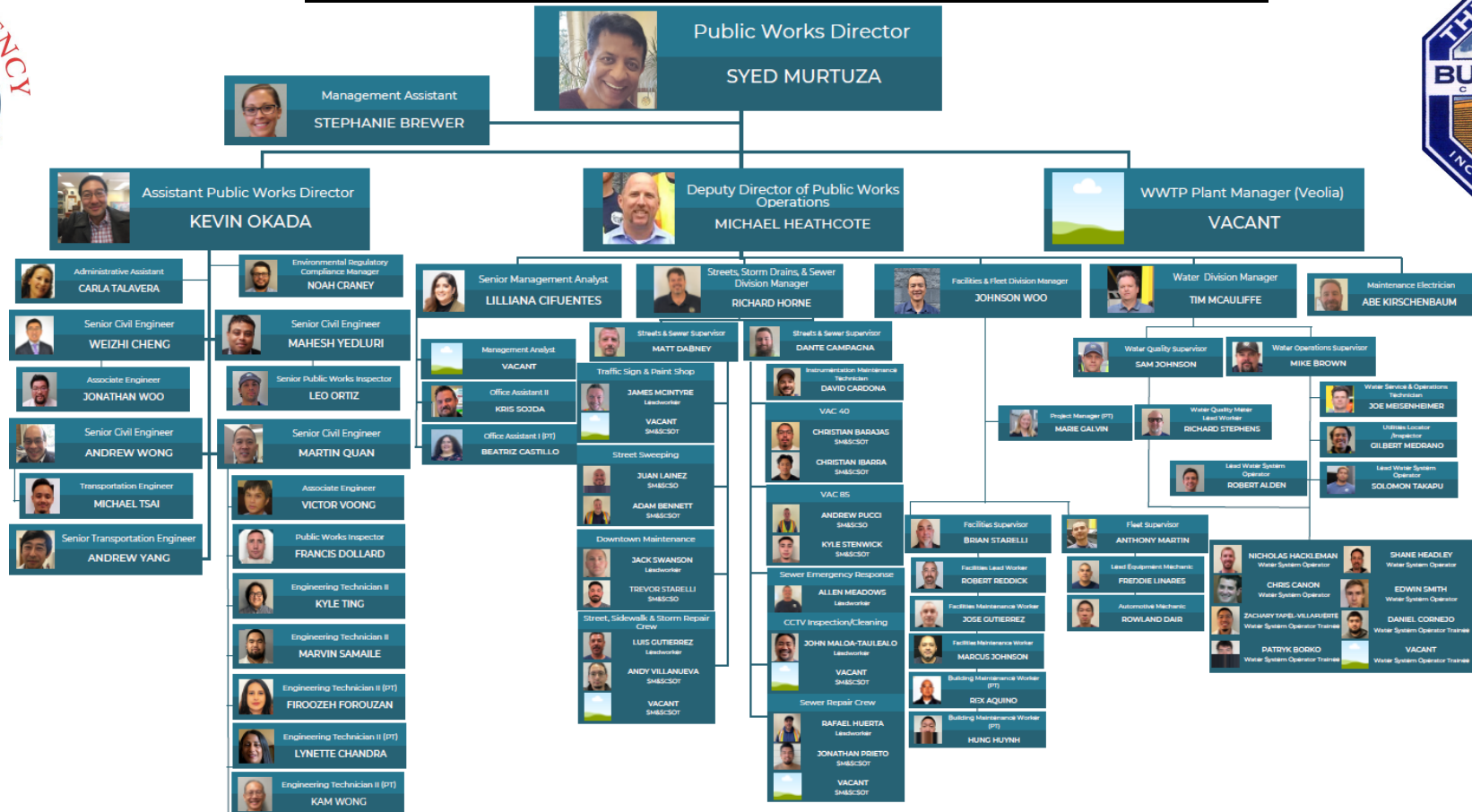
This Week

- ➡ Presentation to Burlingame City Council (Today)
- ➡ Presentations to students at Burlingame High School engineering class and Aragon High School's Engineering/Multi Craft Curriculum class
- ➡ Staff appreciation lunch
- ➡ Display in City Hall

Future

- ➡ Burlingame Public Works display in coordination with the Chamber of Commerce at the Burlingame on the Avenue event

BURLINGAME PUBLIC WORKS



PEOPLE

- Schools
- Students
- Religious Institutions
- Hospital
- Care Facilities
- Residents
- Businesses
- Visitors
- Travelers
- Employees of all industries
- State, federal and regional agencies



PURPOSE

The Public Works Department's mission is to provide quality services with commitment, courtesy, and pride. In partnership with the Burlingame community, the Department strives to offer cost-effective and environmentally responsible services in the areas of design, construction, operation, and maintenance of public works infrastructure critical to the *health and safety* of the community and to make Burlingame a beautiful and vibrant city in which to live and work.



PURPOSE

The primary function of the Department is to provide essential public health and safety services to the community including:

- High-quality and safe drinking water
- Sewer collection system maintenance
- Wastewater treatment & Environmental Quality
- Safe streets, bike and pedestrian infrastructure
- Storm drainage improvements and flood protection
- Traffic signals maintenance
- Streetlights maintenance
- Parking facilities maintenance
- Building facilities maintenance
- Fleet maintenance



PRESENCE

In line with our mission, our people, and purpose we provide a presence



Customer Service



PURPOSE

Community Outreach





PRESENCE

RESPONSE

Ready and Resilient

In line with our mission, our people, and purpose we provide a presence



PRESENCE

RESPONSE

Ready and Resilient

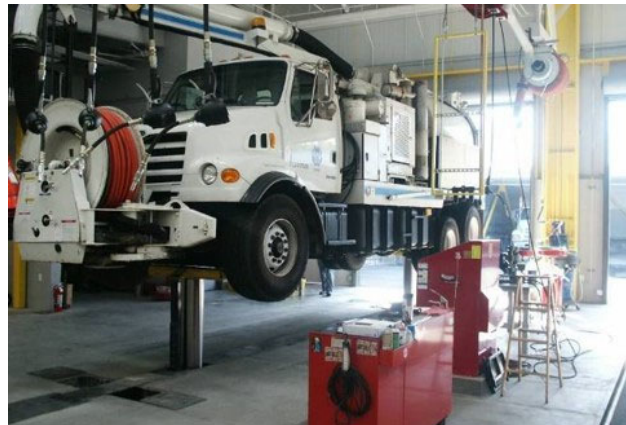




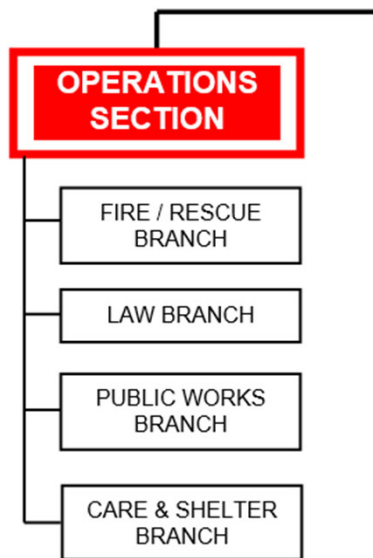
SAN MATEO COUNTY
MOSQUITO & VECTOR
CONTROL DISTRICT



AGENCY COLLABORATION



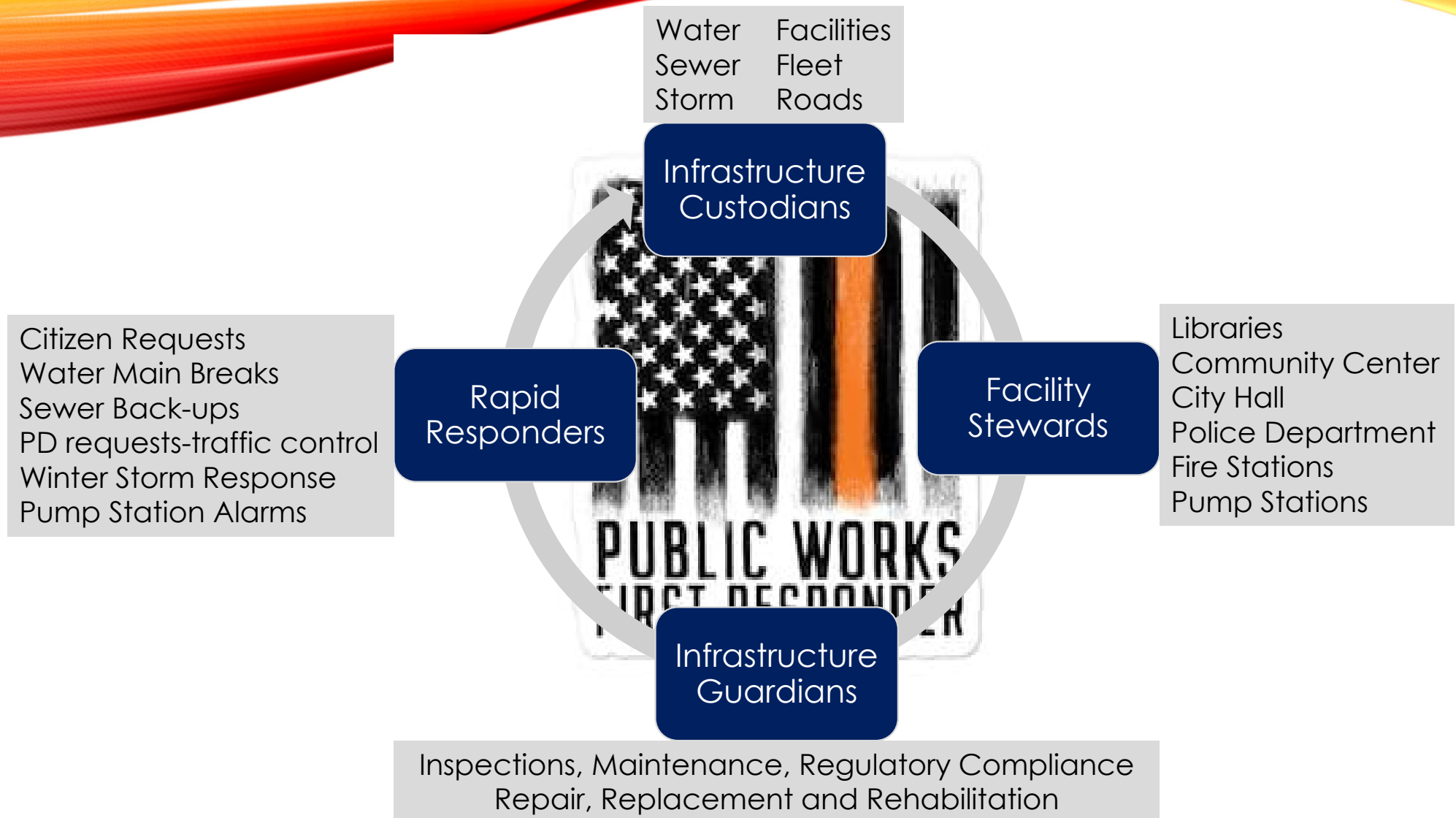
FIRST RESPONDERS



➡ In 2003, President George W. Bush issued Presidential Policy Directive 8 (PPD-8) officially recognizing public works as first responders.

➡ While Police, Fire, and EMS are often the three most recognized first responders, Public Works are also often silently there, providing vital support to emergency response.





PW FIRST RESPONDER BACKGROUND

- 2003, President George W. Bush issued Presidential Policy Directive 8 (PPD-8) officially recognizing public works as first responders.
- 2010, Mississippi, under House Bill (HB) 664, recognized public works professionals as first responders.
- 2017, the APWA Board of Directors approved the adoption of a national “Public Works First Responder” symbol for use throughout North America to identify public works personnel and acknowledge their federally mandated role as first responders.
- 2019, the US Senate passed Senate Concurrent Resolution 15 (S.Con.Res.15), “Expressing support for the designation of October 28, 2019, as Honoring the Nation’s First Responders Day.” Public works is specifically included.
- 2022 New Hampshire Governor Chris Sununu signed into law SB325, formally recognizing public works employees as first responders.
- The National Incident Management System (NIMS) lists public works alongside police, fire, and public.

Public Works is often considered “the silent arm of public safety” ... usually without fanfare. Public Works professionals are often the first on scene and the last to leave the scenes of disasters—no matter the peril.

PEOPLE PURPOSE PRESENCE



PUBLIC WORKS

FIRST RESPONDER

