



101 Corridor Connect Program Update

City of Burlingame



Overview

- 101 Corridor Connect
 - 101 Multimodal Strategies
 - Active 101
- Local Priority Projects
- Mini-Grant Program



San Mateo County Transportation Authority (SMCTA)

- **Plans, funds, and delivers** transportation programs and projects throughout San Mateo County
- **Manages funding** from voter-approved local sales tax (Measure A and Measure W)



Highways



Local Streets
and Roads



Grade
Separations



Transit



Pedestrian
and Bicycle



Transportation
Demand
Management



101 CORRIDOR CONNECT

101

WHAT IS 101 CORRIDOR CONNECT?



- A collaborative program to identify and prioritize **congestion management** projects along US 101 in San Mateo County.
- It looks **beyond just highway infrastructure** and considers the mobility needs of the corridor as a whole.
- **Program partners** include Caltrans, cities, transit agencies, San Mateo County, and C/CAG.

Program Goals



Safe

Enhance safety for users of the transportation network.



Connected

Connect people to the places they need to go.



Sustainable

Improve air quality and reduce emissions.



Inclusive

Increase access for underserved communities.

101 Corridor Connect Outcomes

- Identifies regionally significant projects
 - Impactful projects that are community supported
- CMCP for 101 Corridor
 - Projects are eligible for Solutions for Congested Corridors Program funding
- Positions projects to be more competitive for funding, including SMCTA programs



101 Corridor Connect Working Groups

North County

Local Jurisdiction Staff

Brisbane, South San Francisco, San Bruno, Millbrae, San Mateo County

Transit Agency Partners

Caltrain, BART, SamTrans, San Francisco Bay Ferry

Stakeholders

Commute.org, Caltrans, C/CAG, MTC, SFO

Mid County

Local Jurisdiction Staff

Burlingame, San Mateo, Foster City, Redwood City, Belmont, San Carlos, San Mateo County

Transit Agency Partners

Caltrain, SamTrans

Stakeholders

Commute.org, Caltrans, C/CAG, MTC

South County

Local Jurisdiction Staff

San Mateo County, Menlo Park, Redwood City, East Palo Alto, Atherton

Transit Agency Partners

Caltrain, SamTrans

Stakeholders

Commute.org, Caltrans, C/CAG, MTC



MULTIMODAL STRATEGIES

North County | Mid County | South County

What is a Multimodal Strategy?

The Multimodal Strategies are planning documents that identify and prioritize needed projects in San Mateo County.

Multimodal Strategies were developed for the entire 101 corridor as the first initiative of 101 Corridor Connect.

Projects include highway, active transportation, transit, other types of improvements.

1 North County

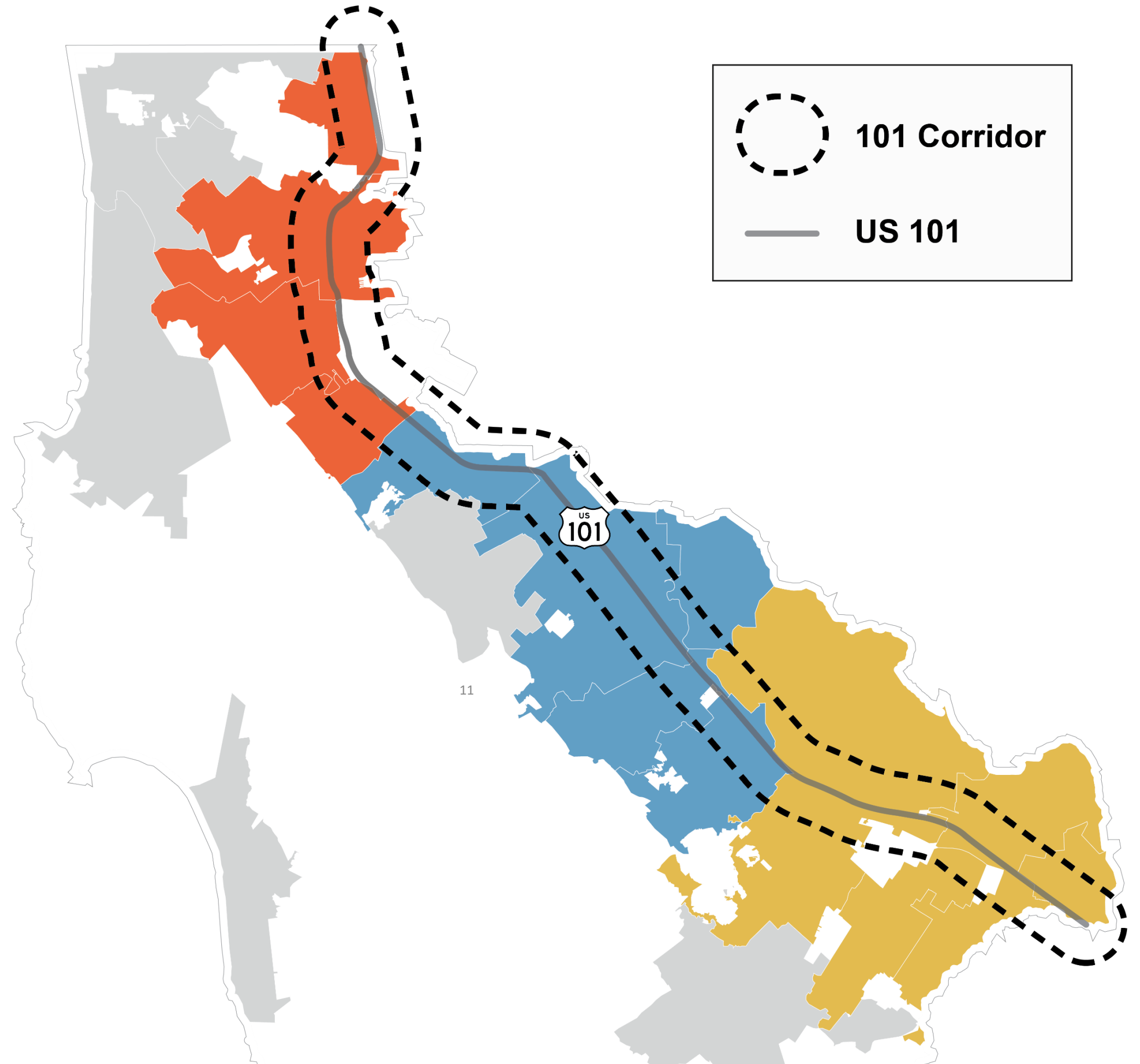
Brisbane, Millbrae, San Bruno, South San Francisco

2 Mid County

Belmont, Burlingame, Foster City, San Carlos, San Mateo, Redwood Shores

3 South County

Atherton, East Palo Alto, Menlo Park, Redwood City



Community/ Stakeholder Engagement Components

- Project webpage
- Multilingual factsheet and Frequently Asked Questions document
- Press release
- Online survey
- Interactive recorded presentation
- Interactive mapping (available online and at in-person events)
- Pop-up activities at local events
- Small group meetings with community-based organizations
- Temporary signs at bus stops

Community & Stakeholder Engagement Pop-Ups

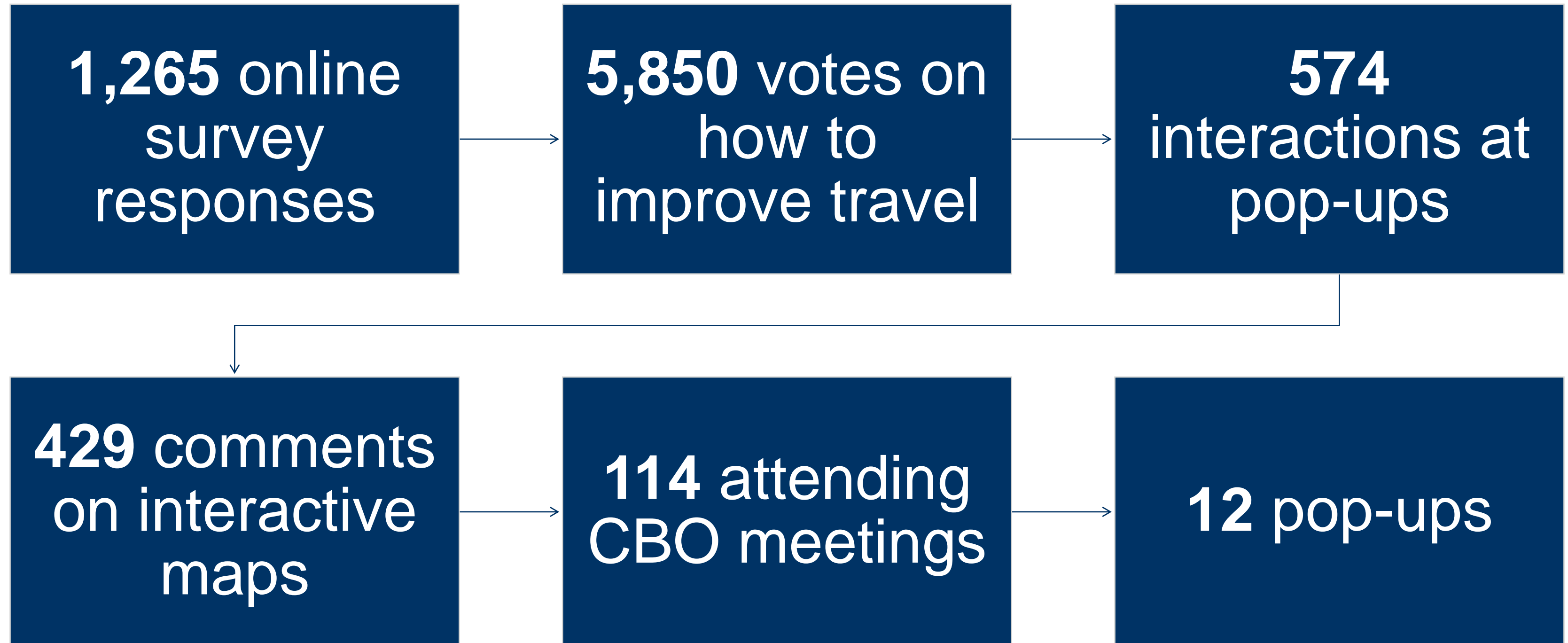


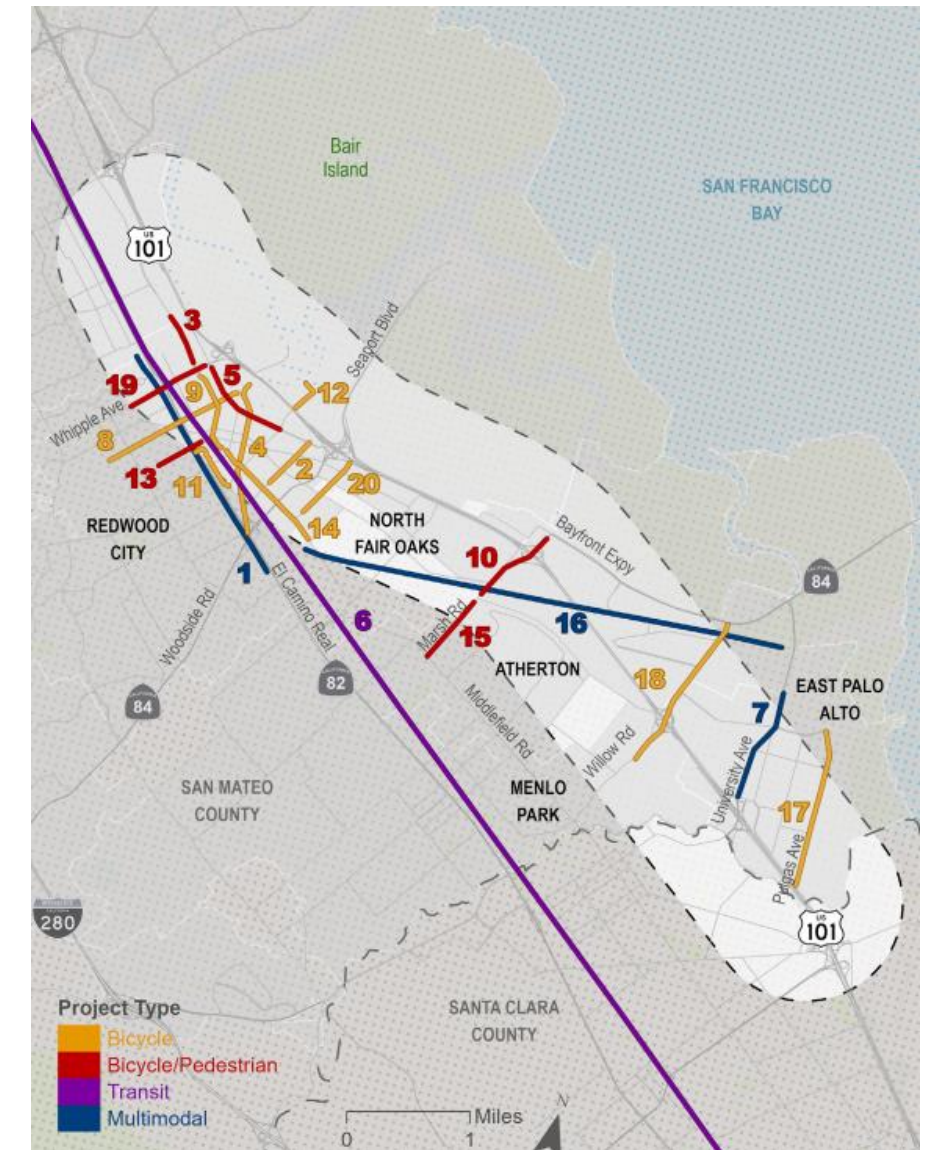
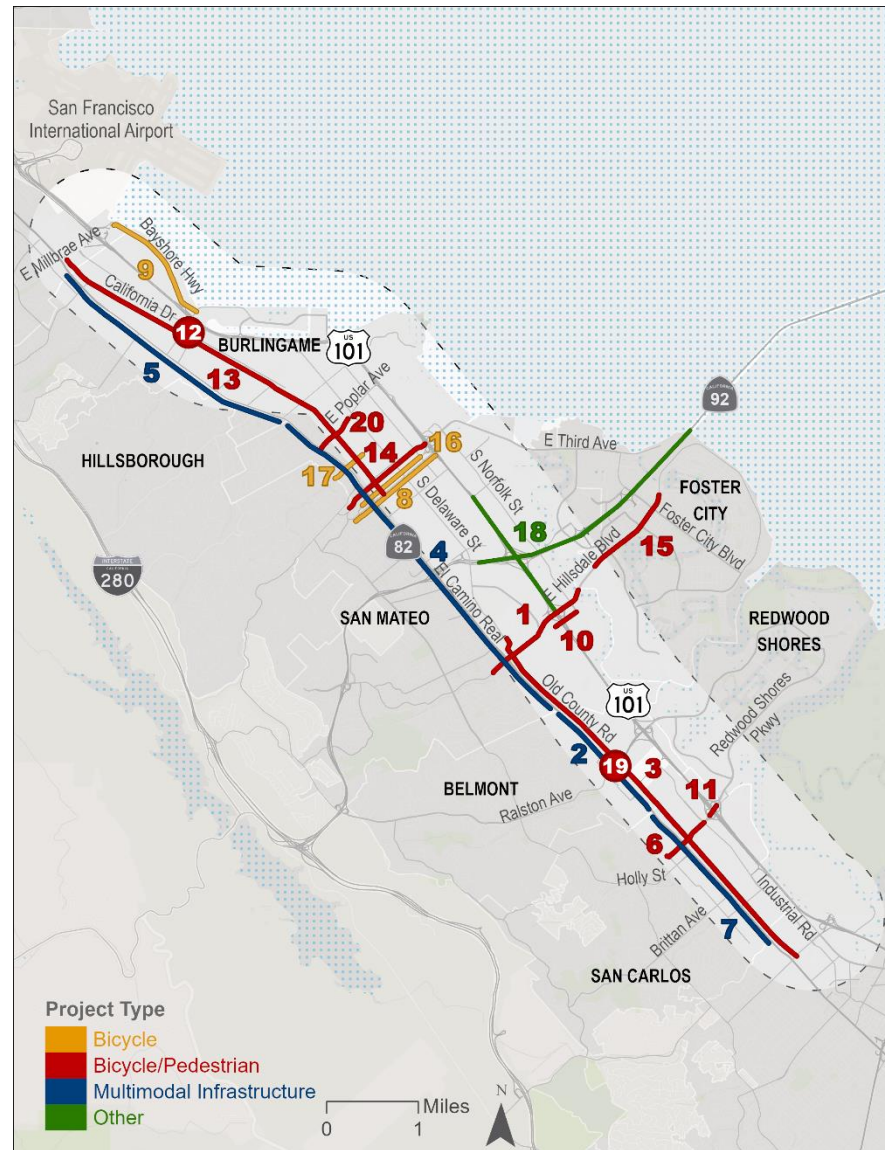
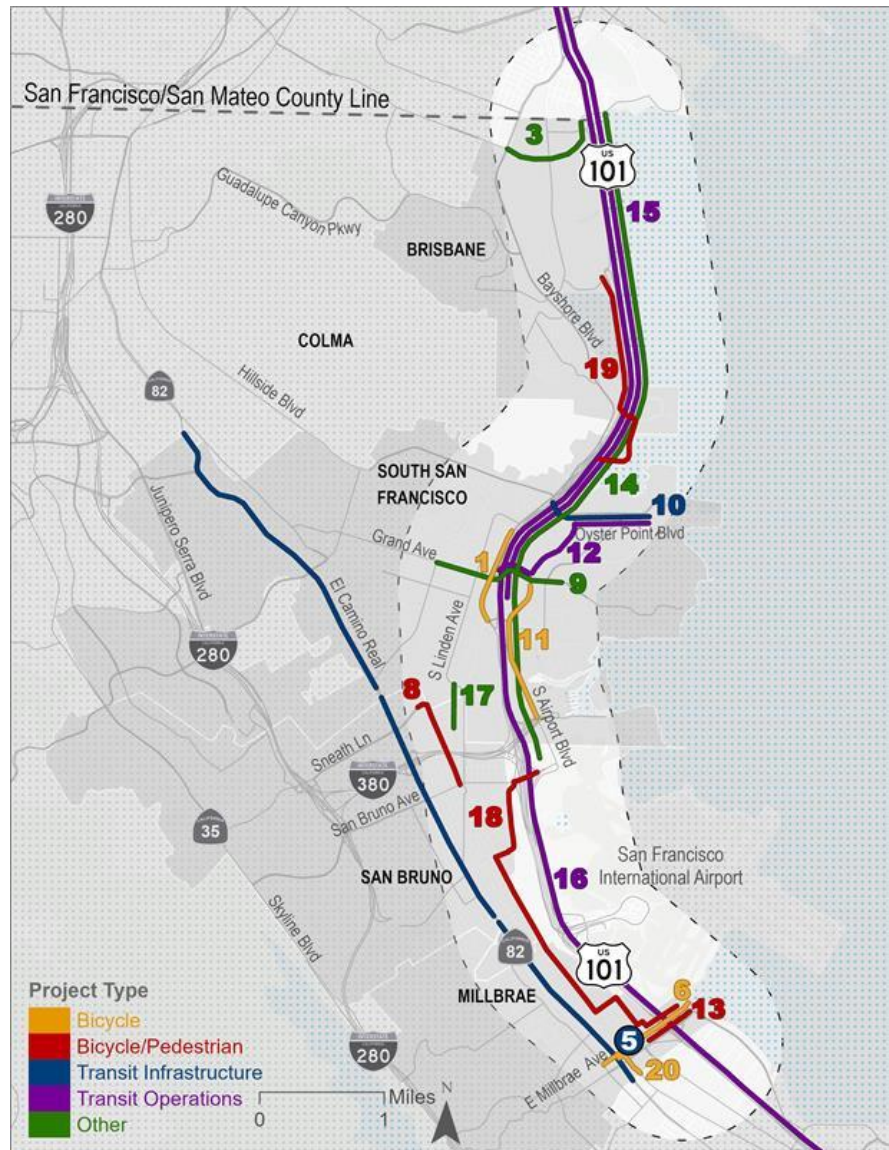


Community & Stakeholder Engagement Meetings with CBOs




Multimodal Strategies Engagement Statistics





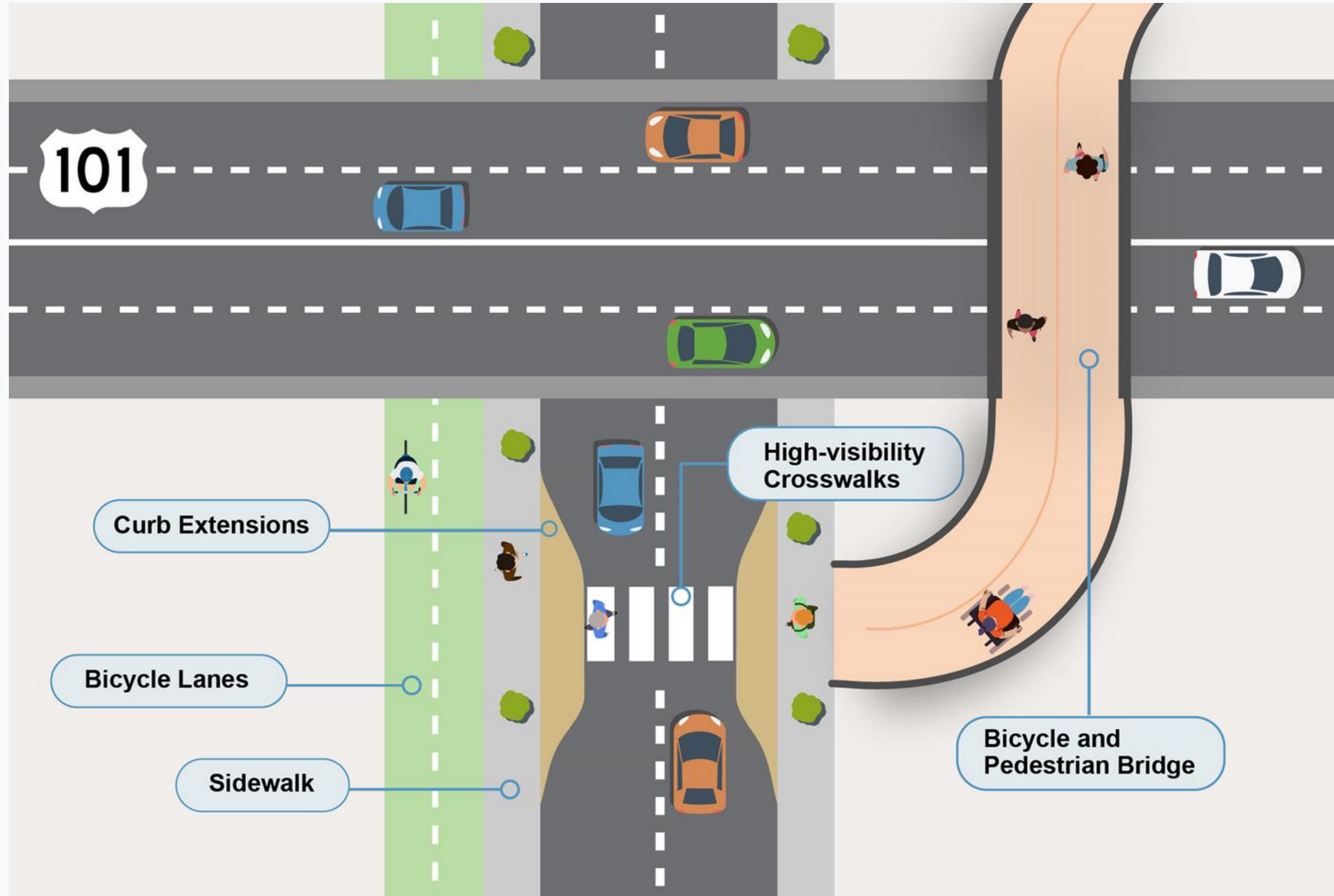
Priority Projects

After the scoring and weighting, projects were ranked with the **top 20 highest scoring projects.**



ACTIVE 101: US 101 SAN MATEO COUNTY CROSSINGS IMPROVEMENT PLAN

WHAT IS ACTIVE 101?



STUDY AREA



FALL 2024 COMMUNITY ENGAGEMENT



6

Multilingual
Pop Up Events



26

Presentations To
Stakeholders

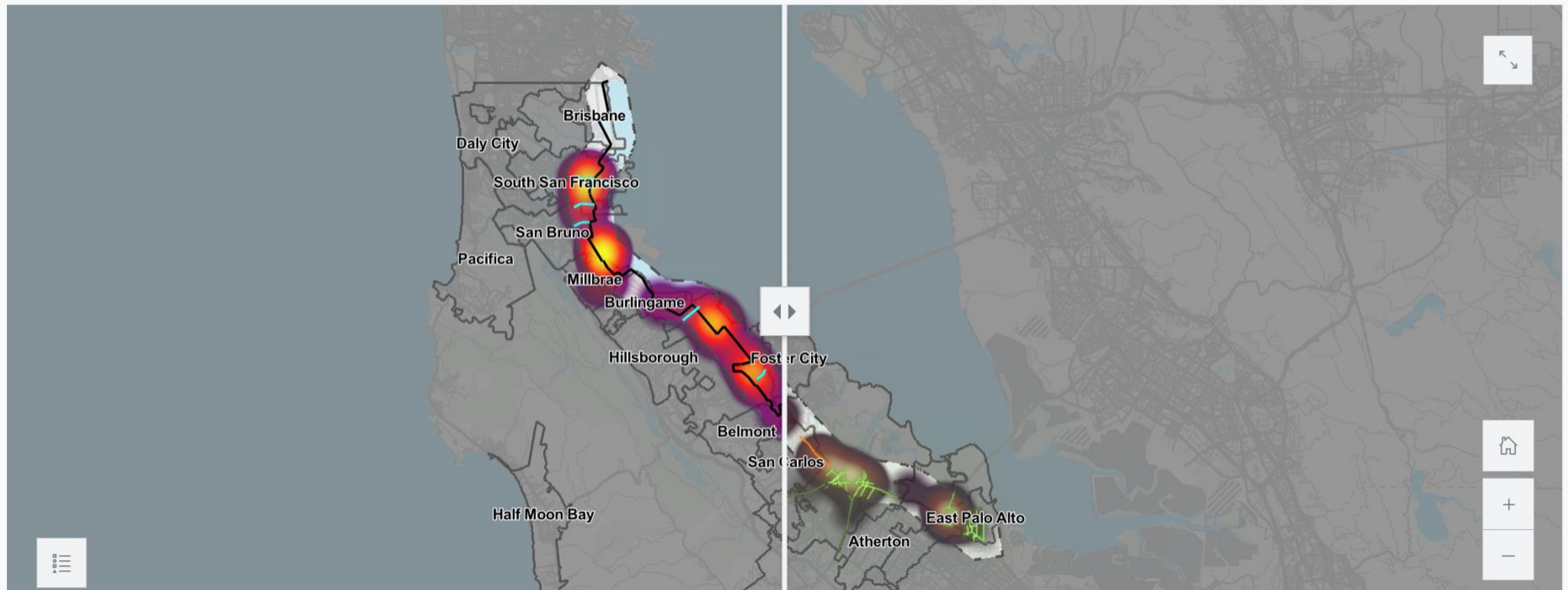


270+

Responses To The
Online "Fund It"
Activity

CREATING THE CORRIDOR

The North-South Corridor Alignment was created by connecting City-identified projects with areas where the community identified concerns.



Active 101 Priority Network: Key Benefits at Full Build Out

The Active 101 Priority Network consists of a system of existing and proposed bicycle and pedestrian projects along and across US 101 that create a contiguous north-south corridor and east-west crossings. Once fully connected, the Priority Network will include:

- Approximately **42 total miles** of access for people walking, biking, and rolling
 - Approximately **7.5 miles** of critical east-west connections
- Approximately **26.6 miles** of new or upgraded bicycle infrastructure

Safety
Approximately **7.5 miles** of the **pedestrian** High Injury Network (HIN) and **6 miles** of the **bike** HIN are included in the Priority Network and will be improved through its implementation.

Connectivity
16 US 101 crossings will be improved or constructed for people walking, biking, and rolling.

Sustainability
Vehicle miles traveled (VMT) is estimated to decrease by **12.7 million** miles over the project lifetime. **Greenhouse gas emissions** are estimated to reduce by **4,377** metric tons of CO₂e.

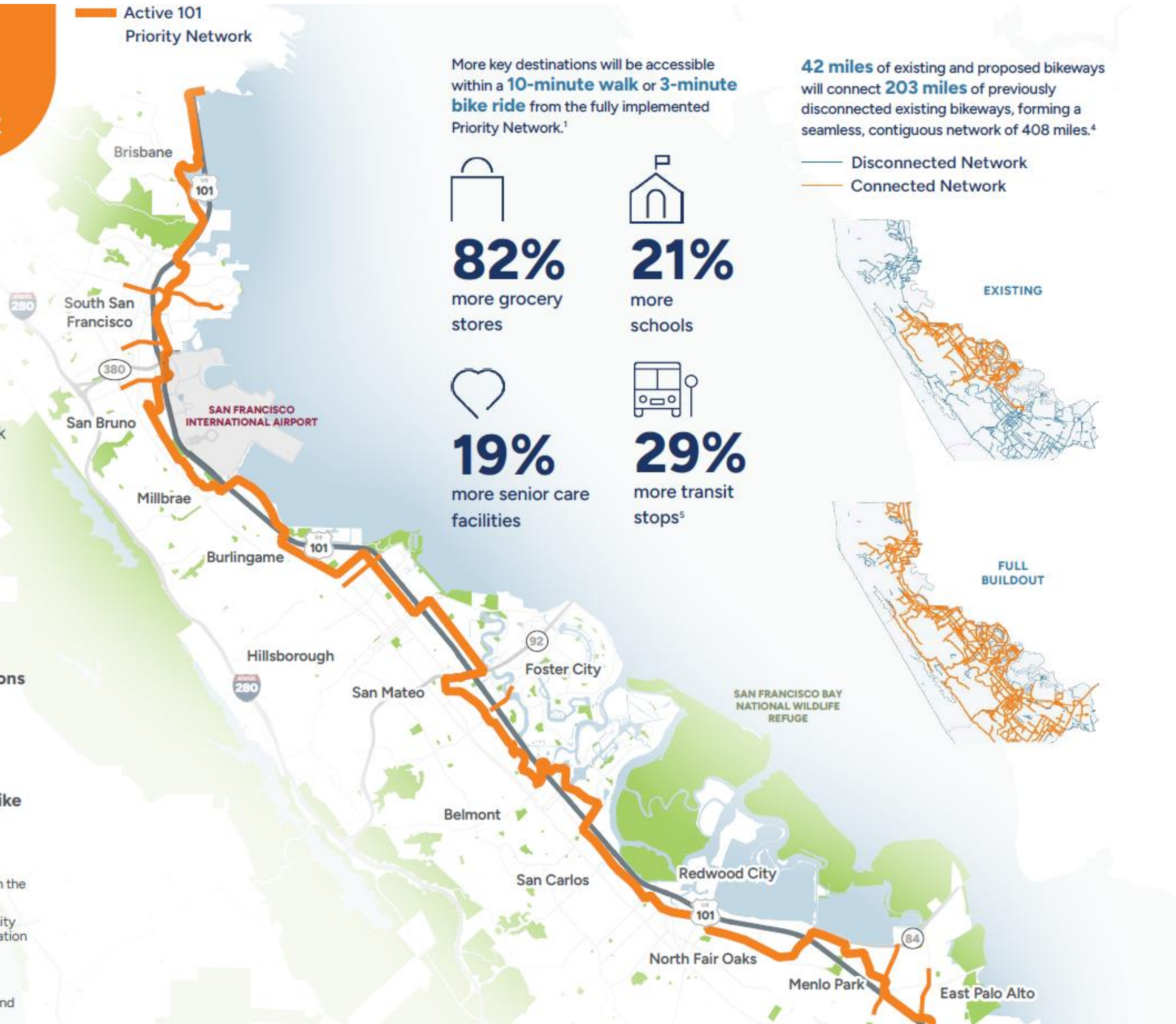
Inclusivity
>138k more people,¹ including **>50k** living in **disadvantaged communities**,² will be within a **10-minute walk** or a **3-minute bike ride** to a high-quality bike facility³ along the Priority Network.

¹ Calculated using a 1/2-mile buffer (approximately a 10-minute walk or 3-minute bike ride) from the Priority Network. Increases are relative to existing conditions.

² Disadvantaged communities include Equity Priority Communities (EPCs) and Caltrans Equity Index (EQI) communities. EPCs are census tracts identified by the Metropolitan Transportation Commission as areas that have a significant concentration of underserved populations. Caltrans Equity Index (EQI) communities are census tracts identified by Caltrans as experiencing transportation-based disadvantages.

³ For analysis purposes high-quality bicycle facilities are defined as Class I (shared-use paths) and Class IV (protected bike lanes).

Active 101
Priority Network



More key destinations will be accessible within a **10-minute walk** or **3-minute bike ride** from the fully implemented Priority Network.¹

82%
more grocery stores

21%
more schools

19%
more senior care facilities

29%
more transit stops⁵

42 miles of existing and proposed bikeways will connect **203 miles** of previously disconnected existing bikeways, forming a seamless, contiguous network of 408 miles.⁴



A large, faint, circular logo with the number '101' inside is positioned in the upper right corner of the slide. The logo is a lighter shade of blue than the background.

101 Corridor Connect Program Next Steps

Priority Multimodal Safety and Congestion Relief Projects Burlingame

- Multimodal Strategy
 - El Camino Real Multimodal Improvements – Burlingame
 - Old Bayshore Highway Bikeway
 - Broadway Caltrain Grade Separation
 - California Drive/North San Mateo Drive Complete Streets
- Active 101
 - Peninsula Avenue
 - Old Bayshore Highway
 - Rollins Road
 - Cadillac Way
 - Carolan Avenue
 - Howard Avenue

101 corridor connect
PROJECT FACTSHEET
PRIORITY 5

▶▶ Multimodal

El Camino Real Multimodal Improvements - Burlingame

Sponsor: Burlingame and SamTrans

LOCATION
El Camino Real within Burlingame city limits (Murchison Drive to Peninsula Avenue/Barroilhet Avenue)

DESCRIPTION

<ul style="list-style-type: none"> Bus bulbs/curb extensions Pedestrian gap closures TSP installation/signal reconfiguration 	<ul style="list-style-type: none"> New rolling stock and infrastructure ADA and aesthetic improvements Transit improvements
--	---

SOURCE DOCUMENT(S)
C/CAG SMC Comprehensive Bicycle and Pedestrian Plan, Caltrans D4 Bike Plan, Caltrans D4 Pedestrian Plan, Caltrans SHOPP OK810, El Camino Bus Speed and Reliability Study, and Reimagine SamTrans

SCHEDULE

- Construction beginning in Fall 2025 on Caltrans SHOPP project OK810 to repave roadway in Burlingame and San Mateo (Peninsula Avenue to Santa Inez Avenue)
- Other multimodal improvements are pending feasibility study

STATUS
Planning phase

ESTIMATED COST

\$150-\$180 MILLION

Existing Conditions

Mid County Multimodal Strategy | 48

Mini Grant Program (\$4M)

New multi-year effort that will fund and provide technical assistance to jurisdictions

Jumpstart planning of priority capital projects identified in the program

Begin moving projects from lines to reality



101 Corridor Connect Mini-Grants



Funding for priority projects

Multimodal corridor study
Conceptual design alternatives
Community engagement



Available Funding

\$750,000 per project
Up to \$1M for multi-jurisdictional projects
No local match required



Streamlined Application

Letter of Interest including confirmation of staff availability or technical assistance request
Site Walk (if selected, must include at least one City Council member)



101 Corridor Connect Mini-Grants



Key Action Items

Talk with staff and SMCTA about projects

Apply to mini-grant program

Participate in site walk if selected

SMCTA CBO Bench for engagement

Questions?

Sue-Ellen Atkinson
Manager, Planning and Fund Management
atkinsons@samtrans.com