

Product Specifications

Product Specifications	Width	Texture	Finish	Profile Width	Profile Depth
Flat Wall Patterns					
Artisan V-Groove Siding	8.25 in (7.0 in Exposure)	Smooth	Primed	0.5 in	0.263 in
Artisan Bevel Channel Siding	10.25 in (9.0 in Exposure)	Smooth	Primed	1.66 in	0.263 in
Artisan Shiplap Siding	10.25 in (9.0 in Exposure)	Smooth	Primed	0.15 in	0.263 in
Artisan Square Channel Siding	10.25 in (9.0 in Exposure)	Smooth	Primed	1.43 in	0.263 in
Lap Siding					
Artisan Lap Siding	8.25 in (7.0 in Exposure)	Smooth and Woodgrain	Primed	-	-
Artisan Beaded Lap Siding	8.25 in (7.0 in Exposure)	Smooth	Primed	-	-
Reveal Panel	47.5 in	Smooth	Primed or with ColorPlus Technology	-	-

Reveal Fastening Products

Product	Reveal Recess Trim	Reveal Surround Trim
Countersunk Filler	Horizontal Trim	Vertical Trim
Countersunk Bit	Horizontal Trim	Vertical Trim
Countersunk Fasteners for Wood	Vertical Trim	Outside Corner Trim
Countersunk Fasteners for Steel	Vertical Trim	Outside Corner Trim
Exposed Fasteners for Wood	Horizontal Edge Trim	Inside Corner Trim
Exposed Fasteners for Steel	Horizontal Edge Trim	Inside Corner Trim
	Vertical F Trim	J Channel Trim
	Vertical F Trim	Drainage Flashing Trim

NEW EXTERIOR SIDING:
 ASPYRE COLLECTION BY JAMES HARDIE
 artisan siding/trim & REVEAL panel system
 LAP SIDING - EXTERIOR COLOR: WHITE
 KELLY-MOORE: Exterior Paint & Enamels
 AcryShield - Exterior Color: WHITE

ARTISAN® SIDING

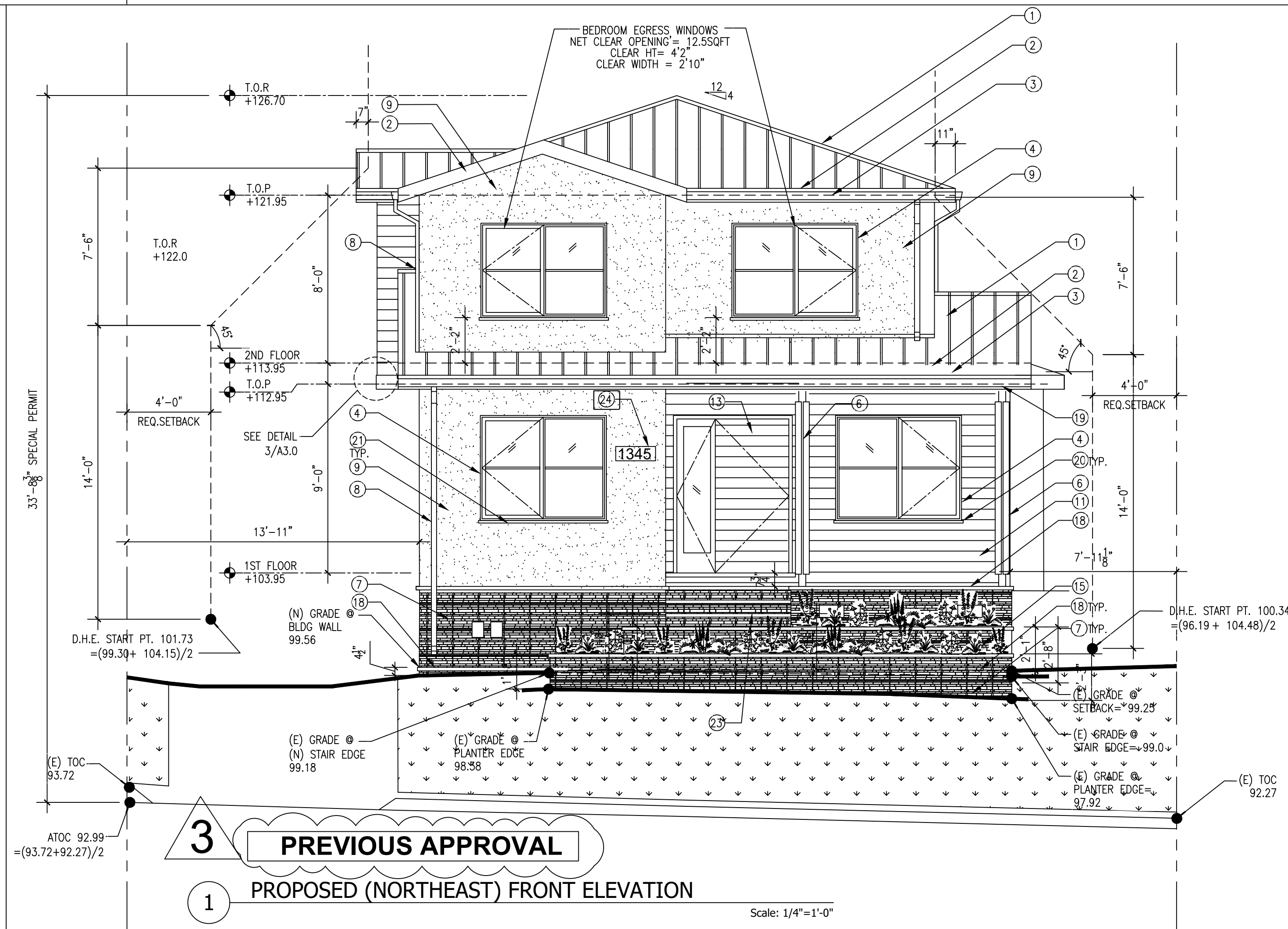
Flat Wall Patterns
Warranted for vertical, soffit and ceiling applications

Lap Siding
5/8-inch thick boards cast deep shadow lines

REVEAL® PANEL SYSTEM

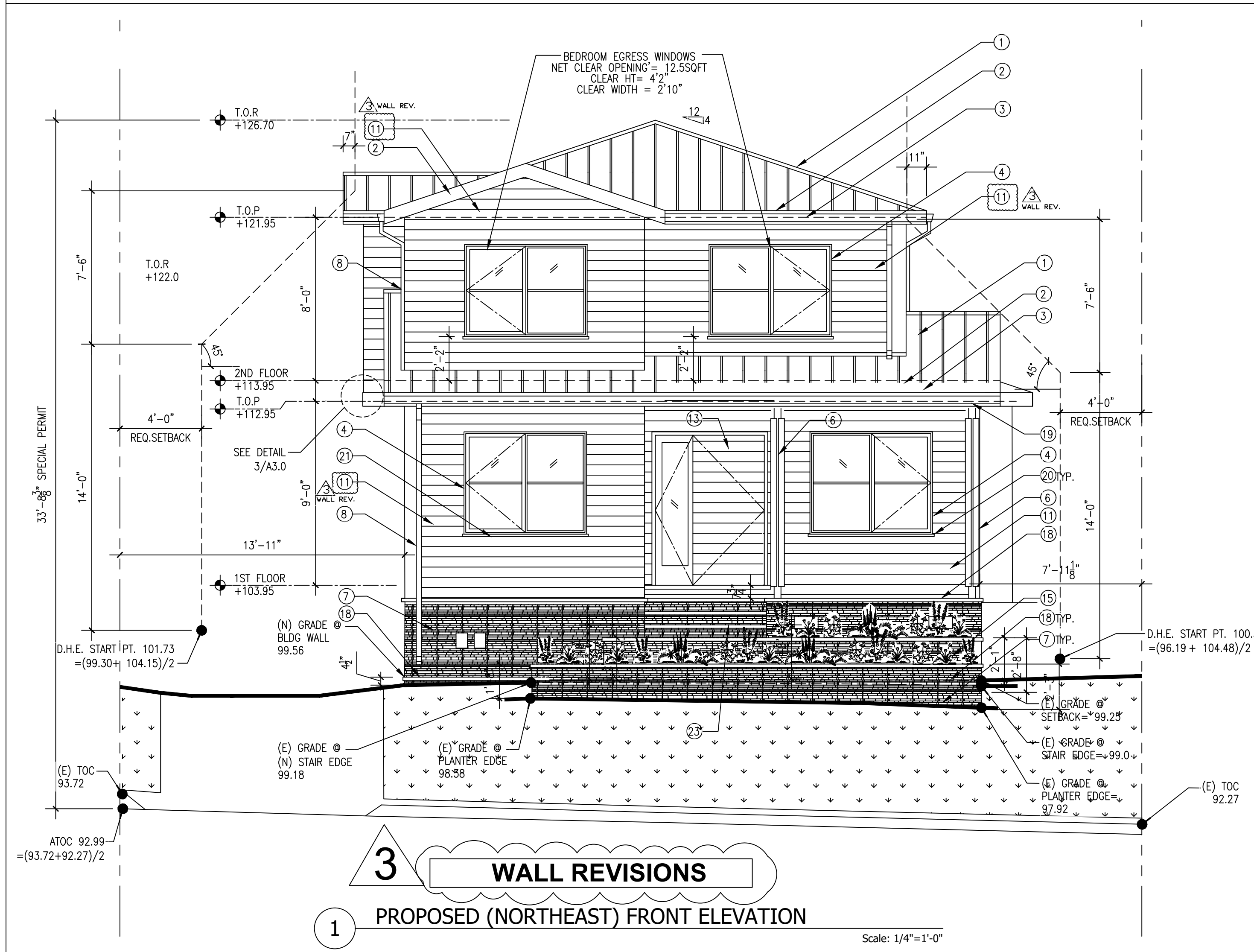
JAMES HARDIE® FIBER CEMENT • Engineered for Climate®
 • 30-year, non-prorated substrate warranty

Distinctive Design Engineered to Last | aspyredesign.com



- ARCHITECTURE KEY NOTE:**
- METAL ROOF IN SLATE GREY. TYP.
 - 2"x8" PAINTED WOOD FASCIA BOARD. PAINT TO MATCH ROOF COLOR. TYP.
 - 4.5" GALV. GUTTER. PAINT TO MATCH FASCIA COLOR. TYP.
 - MILGARD 910 SERIES ALUMINUM WINDOW IN BRONZE ANODIZED. TYP.
 - MILGARD STANDARD ALUMINUM SLIDING DOOR IN BRONZE ANODIZED TYP.
 - STEEL POST COVERED BY STAINED WOOD
 - SLATE LEDGER VENEERS (GRAY COLOR) TYP.
 - 2"x3" GALV. DOWNSPOUT PAINT TO MATCH FASCIA COLOR. TYP.
 - SMOOTH STUCCO FINISHES. WHITEST WHITE COLOR
 - 2"x8" WOOD BAND PAINTED WITH LIGHT GRAY COLOR.
 - 6" STAINED WOOD SIDING. TYP.
 - STEEL CABLE RAILING TOPPED WITH WOOD TYP.
 - STAINED CEDAR CONTEMPORARY WOOD STRIP DOOR WITH SIDELITE.
 - CRAWL SPACE VENTS
 - PLANTER
 - CIRCULAR WOOD DECK
 - EXTERIOR LIGHT FIXTURE
 - TOP FINISHED WITH LIGHT GRAY BLUESTONE
 - STRUCTURAL BEAM COVER BY STAINED WOOD. MATCH #6
 - PAINTED WOOD WINDOW SILL MATCH COLOR WITH FASCIA. (FOR WINDOWS IN STAINED WOOD SIDING) TYP.
 - PAINTED WOOD WINDOW SILL MATCH COLOR WITH STUCCO WALL. (FOR WINDOWS IN STUCCO WALL) TYP.
 - STUCCO CONTROL JOINT
 - NEW STAIR. SLATE LEDGER VENEERS ON RISERS & LIGHT GRAY BLUESTONE ON TREAD
 - NEW ILLUMINATED ADDRESS SIGNAGE. CONTRAST WITH BACKGROUND, MIN. 1/2" STROKE BY FOUR INCHES HIGH AND INTERNALLY ILLUMINATED. THE POWER OF SUCH ILLUMINATION SHALL NOT BE NORMALLY SWITCHABLE. CITY OF BURLINGAME MUNICIPAL CODE 18.08.010. 2019 CBC 501.2

ADDRESS SIGN NOTE:
 Illuminated address signage. Numbers and addresses shall be placed on the house/building in such a position as to be plainly visible and legible front the street road fronting the property. Said numbers shall contrast with their background, shall be a minimum of one-half inch stroke by four inches high, and shall be either internally or externally illuminated in all new construction alterations or repair of existing construction. The power of such illumination shall not be normally switchable City of Burlingame Municipal Code 18.08.010. 2016 CBC 501.2



- ARCHITECTURE KEY NOTE:**
- METAL ROOF IN SLATE GREY. TYP.
 - 2"x8" PAINTED WOOD FASCIA BOARD. PAINT TO MATCH ROOF COLOR. TYP.
 - 4.5" GALV. GUTTER. PAINT TO MATCH FASCIA COLOR. TYP.
 - MILGARD 910 SERIES ALUMINUM WINDOW IN BRONZE ANODIZED. TYP.
 - MILGARD STANDARD ALUMINUM SLIDING DOOR IN BRONZE ANODIZED TYP.
 - STEEL POST COVERED BY STAINED WOOD
 - SLATE LEDGER VENEERS (GRAY COLOR) TYP.
 - 2"x3" GALV. DOWNSPOUT PAINT TO MATCH FASCIA COLOR. TYP.
 - SMOOTH STUCCO FINISHES. WHITEST WHITE COLOR
 - 2"x8" WOOD BAND PAINTED WITH LIGHT GRAY COLOR.
 - 6" STAINED WOOD SIDING. TYP.
 - WOOD RAILING TOPPED WITH WOOD TYP.
 - STAINED CEDAR CONTEMPORARY WOOD STRIP DOOR WITH SIDELITE.
 - CRAWL SPACE VENTS
 - PLANTER
 - CIRCULAR WOOD DECK
 - EXTERIOR LIGHT FIXTURE
 - TOP FINISHED WITH LIGHT GRAY BLUESTONE
 - STRUCTURAL BEAM COVER BY STAINED WOOD. MATCH #6
 - PAINTED WOOD WINDOW SILL MATCH COLOR WITH FASCIA. (FOR WINDOWS IN STAINED WOOD SIDING) TYP.
 - PAINTED WOOD WINDOW SILL MATCH COLOR WITH STUCCO WALL. (FOR WINDOWS IN STUCCO WALL) TYP.
 - STUCCO CONTROL JOINT
 - NEW STAIR. SLATE LEDGER VENEERS ON RISERS & LIGHT GRAY BLUESTONE ON TREAD
 - NEW ILLUMINATED ADDRESS SIGNAGE. CONTRAST WITH BACKGROUND, MIN. 1/2" STROKE BY FOUR INCHES HIGH AND INTERNALLY ILLUMINATED. THE POWER OF SUCH ILLUMINATION SHALL NOT BE NORMALLY SWITCHABLE. CITY OF BURLINGAME MUNICIPAL CODE 18.08.010. 2019 CBC 501.2

ARCHITECTURE KEY NOTE:
EXTERIOR WALL FINISH REVISION-

- 6" STAINED WOOD SIDING. TYP.
- 6" STAINED WOOD SIDING. TYP.

MANUFACTURER:
 SPECIFICATIONS:
 TYPE:
 COLOR & FINISH:

REVISIONS:

1	B20-0044	6/25/20
2	B20-0044	8/13/20
3	WALL REVISION	4/21/22
4		
5		

SJA DEVELOPMENT-LLC
DESIGN DIVISION
 562 BRYANT STREET TEL (415) 684-0632
 SAN FRANCISCO, CA 94107

NEW SINGLE FAMILY ADDITION FOR RESIDENCE OF 1345 VANCOUVER AVE. BURLINGAME, CA 94010

PROPOSED FRONT (NORTHEAST) & ELEVATIONS

DATE: 2/7/20
 SCALE: AS SHOWN
 DRAWN BY: WILSON NG

SHEET NO.
A-3.0a

SHEETS

ASPYRE COLLECTION
by James Hardie

artisan siding + REVEAL Panel System

Product Specifications	Width	Texture	Finish	Profile Width	Profile Depth
Flat Wall Patterns					
Artisan V-Groove Siding	8.25 in (7.0 in Exposure)	Smooth	Primed	0.5 in	0.263 in
Artisan Bevel Channel Siding	10.25 in (9.0 in Exposure)	Smooth	Primed	1.68 in	0.263 in
Artisan Shiplap Siding	10.25 in (9.0 in Exposure)	Smooth	Primed	0.15 in	0.263 in
Artisan Square Channel Siding	10.25 in (9.0 in Exposure)	Smooth	Primed	1.43 in	0.263 in
Lap Siding					
Artisan Lap Siding	8.25 in (7.0 in Exposure)	Smooth and Woodgrain	Primed	-	-
Artisan Beaded Lap Siding	8.25 in (7.0 in Exposure)	Smooth	Primed	-	-

Thickness: 5/8 in. Length: 32 ft. Weight: 4.56 lbs/ft²

Reveal Panel	Width	Texture	Finish
Reveal Panel	47.5 in	Smooth	Primed or with ColorPlus Technology

Thickness: 7/8 in. Length: 96.5 in

*Talk to your local rep about ColorPlus Technology availability in your market.

Reveal Fastening Products	Reveal Recess Trim	Reveal Surround Trim
Countersunk Filler Filler usage rate for countersunk fastening application: 1 box of filler per 1 pallet (40 sheets) of Reveal Panels	Outside Corner Trim	Horizontal Trim
Countersunking Bit Usage rate for countersunk fastening application: 1 unit per 1 pallet (40 sheets) of Reveal Panels	Horizontal Trim	Vertical Trim
Countersunk Fasteners for Wood 1.5 in length x 0.39 in. HD, 319 SS, Bugle Head Square Drive	Vertical Trim	Outside Corner Trim
Countersunk Fasteners for Steel 1.5 in length x 0.39 in. HD, 410 SS, Bugle Head #2 Square Drive	Drainage Flashing Trim	Inside Corner Trim
Exposed Fasteners for Wood 1.5 in length x 0.39 in. HD, 10-12 SS, TORX Pan-Head Self-Drilling	Horizontal Edge Trim	J Channel Trim
Exposed Fasteners for Steel 1.05 in length x 0.39 in. HD, 10-12 SS, TORX Pan-Head Self-Drilling	Vertical F Trim	Drainage Flashing Trim

©2017 James Hardie Building Products Inc. All Rights Reserved. ASP1802 08/18

aspredesign.com

NEW EXTERIOR SIDING:

ASPYR COLLECTION BY JAMES HARDIE
artisan siding/trim & REVEAL panel system
LAP SIDING - EXTERIOR COLOR: WHITE
KELLY-MOORE: Exterior Paint & Enamels
AcryShield - Exterior Color: WHITE

ASPYRE COLLECTION
by James Hardie

artisan siding + REVEAL Panel System

The Aspyre Collection by James Hardie brings together the contrasting elements of Artisan® siding and the Reveal® Panel System for one-of-a-kind home designs.

ARTISAN® SIDING

Flat Wall Patterns
Warranted for vertical, soffit and ceiling applications

Lap Siding
5/8-inch thick boards cast deep shadow lines

REVEAL® PANEL SYSTEM

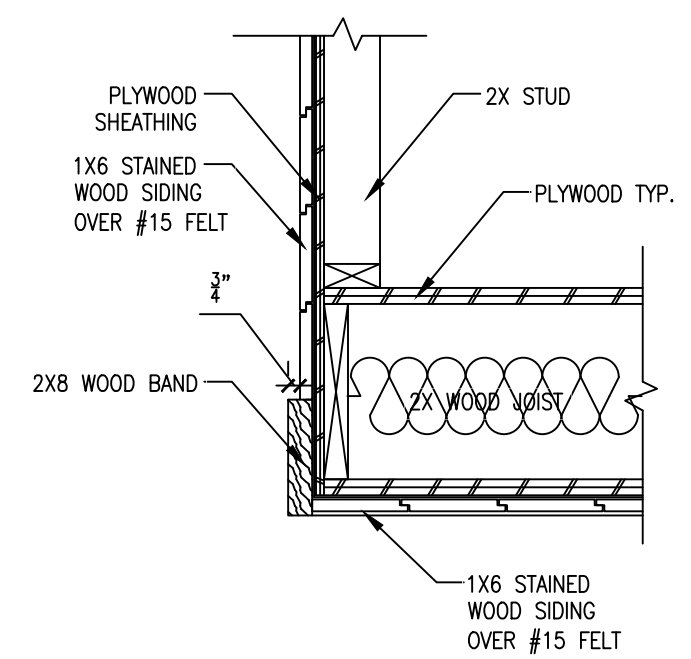
Reveal Panels
Reveal Recess Trim
Reveal Surround Trim

Reveal Recess Trim
Reveal Surround Trim

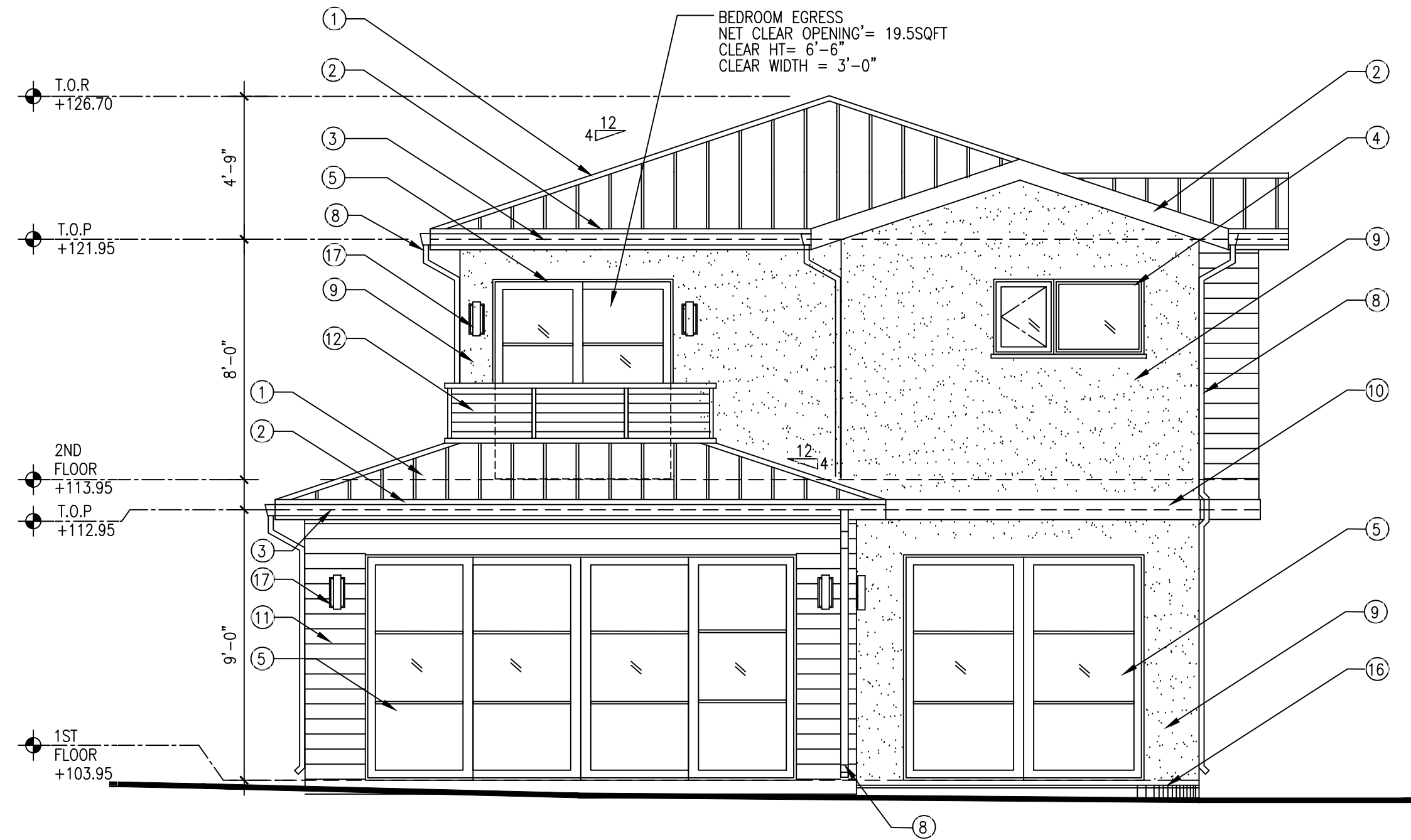
JAMES HARDIE FIBER CEMENT • Engineered for Climate®
• 30-year, non-prorated substrate warranty

Distinctive Design Engineered to Last | aspredesign.com

3 SIDING @ BAY WINDOW
Scale: 1/4"=1'-0"



3 PREVIOUS APPROVAL
2 PROPOSED (SOUTHWEST) REAR ELEVATION
Scale: 1/4"=1'-0"

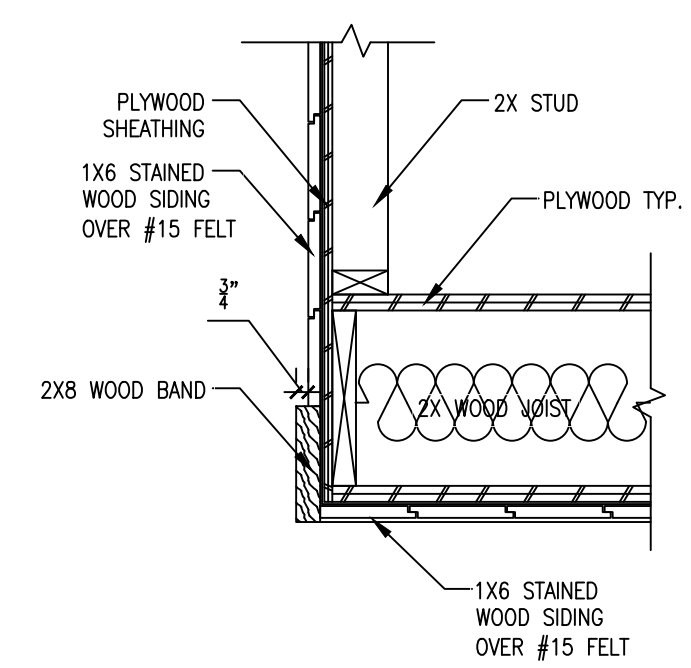


- ARCHITECTURE KEY NOTE:**
- METAL ROOF IN SLATE GREY. TYP.
 - 2"x8" PAINTED WOOD FASCIA BOARD. PAINT TO MATCH ROOF COLOR. TYP.
 - 4.5" GALV. GUTTER. PAINT TO MATCH FASCIA COLOR. TYP.
 - MILGARD 910 SERIES ALUMINUM WINDOW IN BRONZE ANODIZED. TYP.
 - MILGARD STANDARD ALUMINUM SLIDING DOOR IN BRONZE ANODIZED TYP.
 - STEEL POST COVERED BY STAINED WOOD
 - SLATE LEDGER VENEERS (GRAY COLOR) TYP.
 - 2"x3" GALV. DOWNSPOUT PAINT TO MATCH FASCIA COLOR. TYP.
 - SMOOTH STUCCO FINISHES. WHITEST WHITE COLOR
 - 2"x8" WOOD BAND PAINTED WITH LIGHT GRAY COLOR.
 - 6" STAINED WOOD SIDING. TYP.
 - STEEL CABLE RAILING TOPPED WITH WOOD TYP.
 - STAINED CEDAR CONTEMPORARY WOOD STRIP DOOR WITH SIDELITE.
 - CRAWL SPACE VENTS
 - PLANTER
 - CIRCULAR WOOD DECK
 - EXTERIOR LIGHT FIXTURE
 - TOP FINISHED WITH LIGHT GRAY BLUESTONE
 - STRUCTURAL BEAM COVER BY STAINED WOOD. MATCH #6
 - PAINTED WOOD WINDOW SILL MATCH COLOR WITH FASCIA. (FOR WINDOWS IN STAINED WOOD SIDING) TYP.
 - PAINTED WOOD WINDOW SILL MATCH COLOR WITH STUCCO WALL. (FOR WINDOWS IN STUCCO WALL) TYP.
 - STUCCO CONTROL JOINT
 - NEW STAIR. SLATE LEDGER VENEERS ON RISERS & LIGHT GRAY BLUESTONE ON TREAD
 - NEW ILLUMINATED ADDRESS SIGNAGE. CONTRAST WITH BACKGROUND, MIN. 1/2" STROKE BY FOUR INCHES HIGH AND INTERNALLY ILLUMINATED. THE POWER OF SUCH ILLUMINATION SHALL NOT BE NORMALLY SWITCHABLE. CITY OF BURLINGAME MUNICIPAL CODE 18.08.010. 2019 CBC 501.2

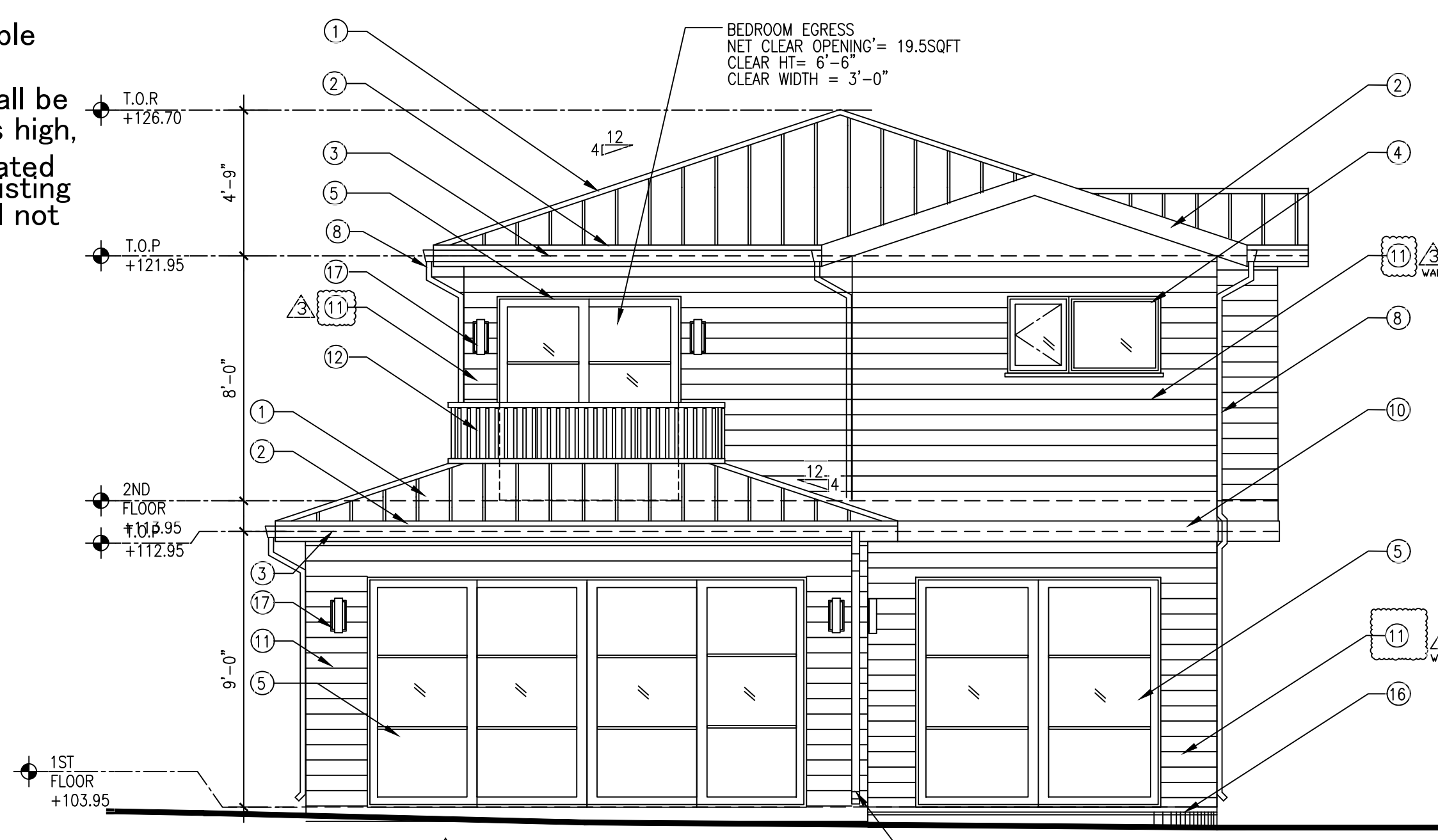
ADDRESS SIGN NOTE:
Illuminated address signage. Numbers and addresses shall be placed on the house/building in such a position as to be plainly visible and legible front the street road fronting the property. Said numbers shall contrast with their background, shall be a minimum of one-half inch stroke by four inches high, and shall be either internally or externally illuminated in all new construction alterations or repair of existing construction. The power of such illumination shall not be normally switchable City of Burlingame Municipal Code 18.08.010. 2016 CBC 501.2

ADDRESS SIGN NOTE:
Illuminated address signage. Numbers and addresses shall be placed on the house/building in such a position as to be plainly visible and legible front the street road fronting the property. Said numbers shall contrast with their background, shall be a minimum of one-half inch stroke by four inches high, and shall be either internally or externally illuminated in all new construction alterations or repair of existing construction. The power of such illumination shall not be normally switchable City of Burlingame Municipal Code 18.08.010. 2016 CBC 501.2

3 SIDING @ BAY WINDOW
Scale: 1/4"=1'-0"



3 WALL REVISIONS
2 PROPOSED (SOUTHWEST) REAR ELEVATION
Scale: 1/4"=1'-0"



- ARCHITECTURE KEY NOTE:**
- METAL ROOF IN SLATE GREY. TYP.
 - 2"x8" PAINTED WOOD FASCIA BOARD. PAINT TO MATCH ROOF COLOR. TYP.
 - 4.5" GALV. GUTTER. PAINT TO MATCH FASCIA COLOR. TYP.
 - MILGARD 910 SERIES ALUMINUM WINDOW IN BRONZE ANODIZED. TYP.
 - MILGARD STANDARD ALUMINUM SLIDING DOOR IN BRONZE ANODIZED TYP.
 - STEEL POST COVERED BY STAINED WOOD
 - SLATE LEDGER VENEERS (GRAY COLOR) TYP.
 - 2"x3" GALV. DOWNSPOUT PAINT TO MATCH FASCIA COLOR. TYP.
 - SMOOTH STUCCO FINISHES. WHITEST WHITE COLOR
 - 2"x8" WOOD BAND PAINTED WITH LIGHT GRAY COLOR.
 - 6" STAINED WOOD SIDING. TYP. (REMOVE STUCCO FINISHES)
 - STEEL CABLE RAILING TOPPED WITH WOOD TYP. (INSTALL WOOD SIDING, #11)
 - STAINED CEDAR CONTEMPORARY WOOD STRIP DOOR WITH SIDELITE.
 - CRAWL SPACE VENTS
 - PLANTER
 - CIRCULAR WOOD DECK
 - EXTERIOR LIGHT FIXTURE
 - TOP FINISHED WITH LIGHT GRAY BLUESTONE
 - STRUCTURAL BEAM COVER BY STAINED WOOD. MATCH #6
 - PAINTED WOOD WINDOW SILL MATCH COLOR WITH FASCIA. (FOR WINDOWS IN STAINED WOOD SIDING) TYP.
 - PAINTED WOOD WINDOW SILL MATCH COLOR WITH STUCCO WALL. (FOR WINDOWS IN STUCCO WALL) TYP.
 - STUCCO CONTROL JOINT
 - NEW STAIR. SLATE LEDGER VENEERS ON RISERS & LIGHT GRAY BLUESTONE ON TREAD
 - NEW ILLUMINATED ADDRESS SIGNAGE. CONTRAST WITH BACKGROUND, MIN. 1/2" STROKE BY FOUR INCHES HIGH AND INTERNALLY ILLUMINATED. THE POWER OF SUCH ILLUMINATION SHALL NOT BE NORMALLY SWITCHABLE. CITY OF BURLINGAME MUNICIPAL CODE 18.08.010. 2019 CBC 501.2

ARCHITECTURE KEY NOTE:
EXTERIOR WALL FINISH REVISION-
9 6" STAINED WOOD SIDING. TYP.
11 6" STAINED WOOD SIDING. TYP.
MANUFACTURER:
SPECIFICATIONS:
TYPE:
COLOR & FINISH:

REVISIONS:

1	B20-0044	6/25/20
2	B20-0044	8/13/20
3	WALL REVISION	4/21/22
4		
5		

SJA DEVELOPMENT-LLC
DESIGN DIVISION
562 BRYANT STREET TEL (415) 684-0632
SAN FRANCISCO, CA 94107

NEW SINGLE FAMILY ADDITION FOR RESIDENCE OF 1345 VANCOUVER AVE. BURLINGAME, CA 94010

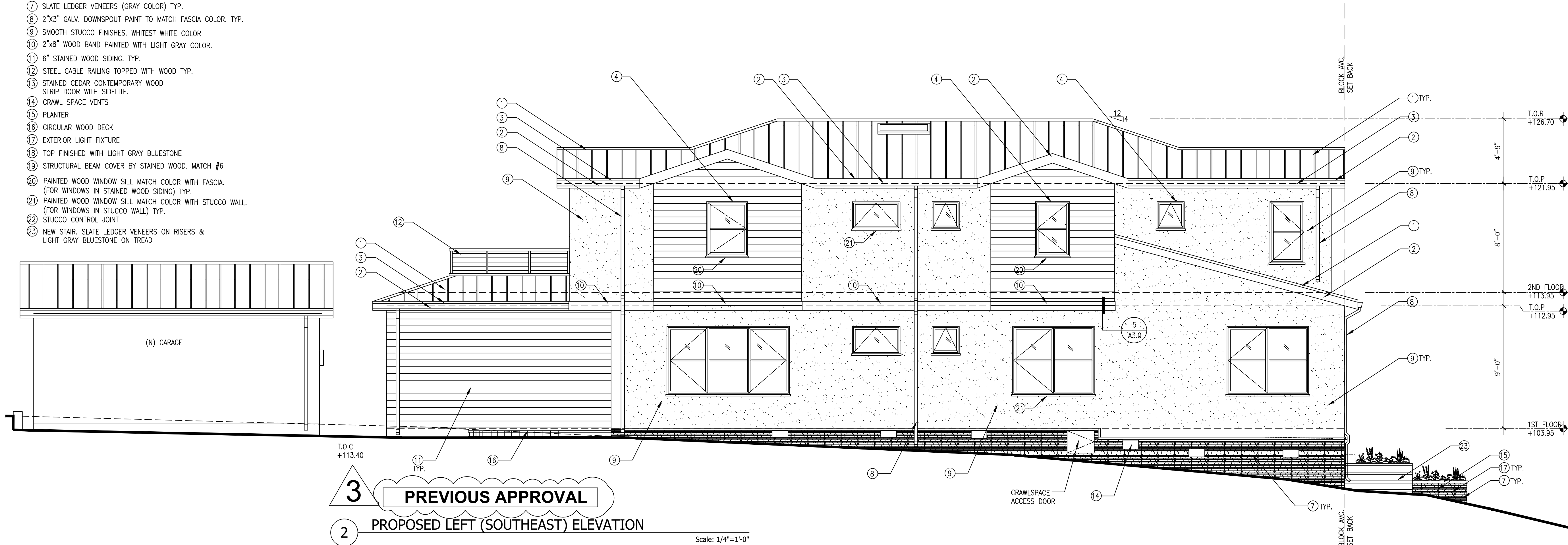
PROPOSED REAR (SOUTHWEST) ELEVATIONS

DATE: 2/7/20
SCALE: AS SHOWN
DRAWN BY: WILSON NG

SHEET NO. **A-3.0b**

ARCHITECTURE KEY NOTE:

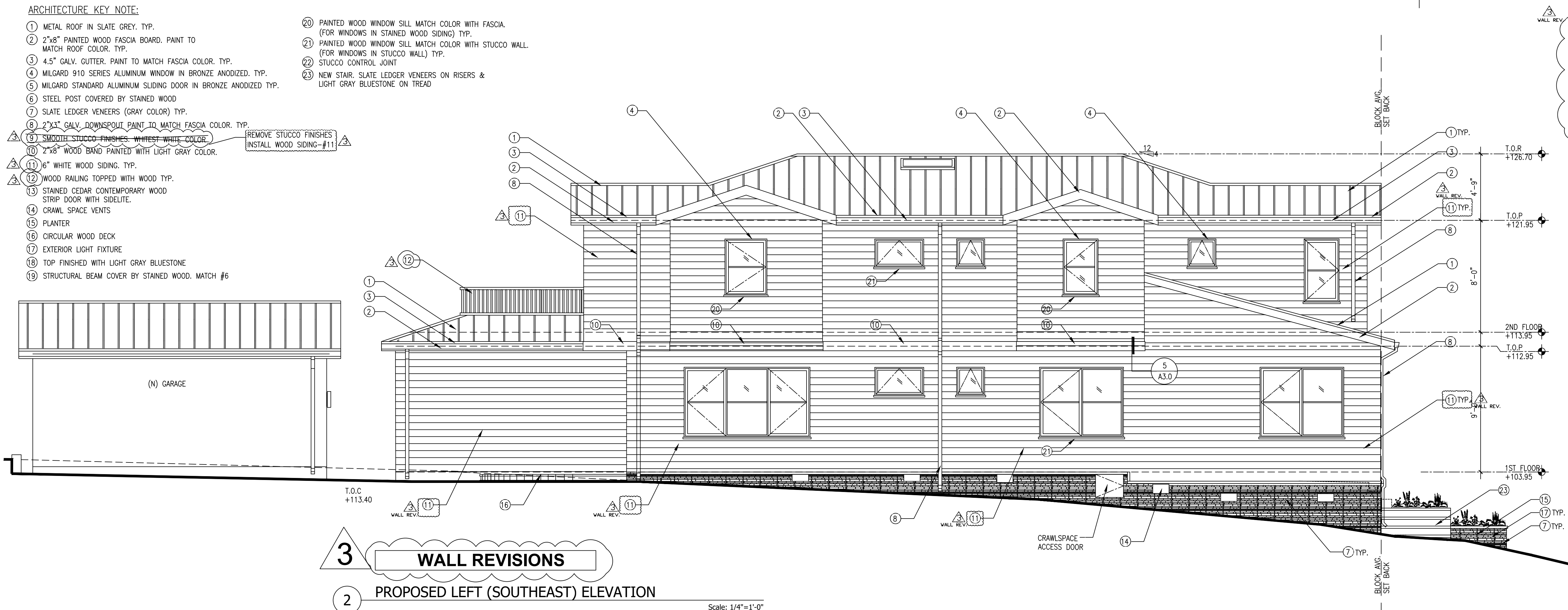
- 1 METAL ROOF IN SLATE GREY, TYP.
- 2 2"x8" PAINTED WOOD FASCIA BOARD, PAINT TO MATCH ROOF COLOR, TYP.
- 3 4.5" GALV. GUTTER, PAINT TO MATCH FASCIA COLOR, TYP.
- 4 MILGARD 910 SERIES ALUMINUM WINDOW IN BRONZE ANODIZED, TYP.
- 5 MILGARD STANDARD ALUMINUM SLIDING DOOR IN BRONZE ANODIZED TYP.
- 6 STEEL POST COVERED BY STAINED WOOD
- 7 SLATE LEDGER VENEERS (GRAY COLOR) TYP.
- 8 2"x3" GALV. DOWNSPOUT PAINT TO MATCH FASCIA COLOR, TYP.
- 9 SMOOTH STUCCO FINISHES, WHITEST WHITE COLOR
- 10 2"x8" WOOD BAND PAINTED WITH LIGHT GRAY COLOR.
- 11 6" STAINED WOOD SIDING, TYP.
- 12 STEEL CABLE RAILING TOPPED WITH WOOD TYP.
- 13 STAINED CEDAR CONTEMPORARY WOOD STRIP DOOR WITH SIDELITE.
- 14 CRAWL SPACE VENTS
- 15 PLANTER
- 16 CIRCULAR WOOD DECK
- 17 EXTERIOR LIGHT FIXTURE
- 18 TOP FINISHED WITH LIGHT GRAY BLUESTONE
- 19 STRUCTURAL BEAM COVER BY STAINED WOOD, MATCH #6
- 20 PAINTED WOOD WINDOW SILL MATCH COLOR WITH FASCIA. (FOR WINDOWS IN STAINED WOOD SIDING) TYP.
- 21 PAINTED WOOD WINDOW SILL MATCH COLOR WITH STUCCO WALL. (FOR WINDOWS IN STUCCO WALL) TYP.
- 22 STUCCO CONTROL JOINT
- 23 NEW STAIR, SLATE LEDGER VENEERS ON RISERS & LIGHT GRAY BLUESTONE ON TREAD



Scale: 1/4"=1'-0"

ARCHITECTURE KEY NOTE:

- 1 METAL ROOF IN SLATE GREY, TYP.
- 2 2"x8" PAINTED WOOD FASCIA BOARD, PAINT TO MATCH ROOF COLOR, TYP.
- 3 4.5" GALV. GUTTER, PAINT TO MATCH FASCIA COLOR, TYP.
- 4 MILGARD 910 SERIES ALUMINUM WINDOW IN BRONZE ANODIZED, TYP.
- 5 MILGARD STANDARD ALUMINUM SLIDING DOOR IN BRONZE ANODIZED TYP.
- 6 STEEL POST COVERED BY STAINED WOOD
- 7 SLATE LEDGER VENEERS (GRAY COLOR) TYP.
- 8 2"x3" GALV. DOWNSPOUT PAINT TO MATCH FASCIA COLOR, TYP.
- 9 REMOVE STUCCO FINISHES. INSTALL WOOD SIDING-#11
- 10 2"x8" WOOD BAND PAINTED WITH LIGHT GRAY COLOR.
- 11 6" WHITE WOOD SIDING, TYP.
- 12 WOOD RAILING TOPPED WITH WOOD TYP.
- 13 STAINED CEDAR CONTEMPORARY WOOD STRIP DOOR WITH SIDELITE.
- 14 CRAWL SPACE VENTS
- 15 PLANTER
- 16 CIRCULAR WOOD DECK
- 17 EXTERIOR LIGHT FIXTURE
- 18 TOP FINISHED WITH LIGHT GRAY BLUESTONE
- 19 STRUCTURAL BEAM COVER BY STAINED WOOD, MATCH #6
- 20 PAINTED WOOD WINDOW SILL MATCH COLOR WITH FASCIA. (FOR WINDOWS IN STAINED WOOD SIDING) TYP.
- 21 PAINTED WOOD WINDOW SILL MATCH COLOR WITH STUCCO WALL. (FOR WINDOWS IN STUCCO WALL) TYP.
- 22 STUCCO CONTROL JOINT
- 23 NEW STAIR, SLATE LEDGER VENEERS ON RISERS & LIGHT GRAY BLUESTONE ON TREAD



Scale: 1/4"=1'-0"

ARCHITECTURE KEY NOTE:
EXTERIOR WALL FINISH REVISION-
9 6" STAINED WOOD SIDING, TYP.
11 6" STAINED WOOD SIDING, TYP.
MANUFACTURER:
SPECIFICATIONS:
TYPE:
COLOR & FINISH:

REVISIONS:		
1	B20-0044	6/25/20
2	B20-0044	8/13/20
3	WALL REVISION	4/21/22
4		
5		

**SJA DEVELOPMENT-
LLC**
DESIGN DIVISION
562 BRYANT STREET TEL (415) 684-0632
SAN FRANCISCO, CA 94107

**NEW SINGLE FAMILY ADDITION FOR
RESIDENCE OF
1345 VANCOUVER AVE.
BURLINGAME, CA 94010**

PROPOSED LEFT (SOUTHEAST) & ELEVATIONS

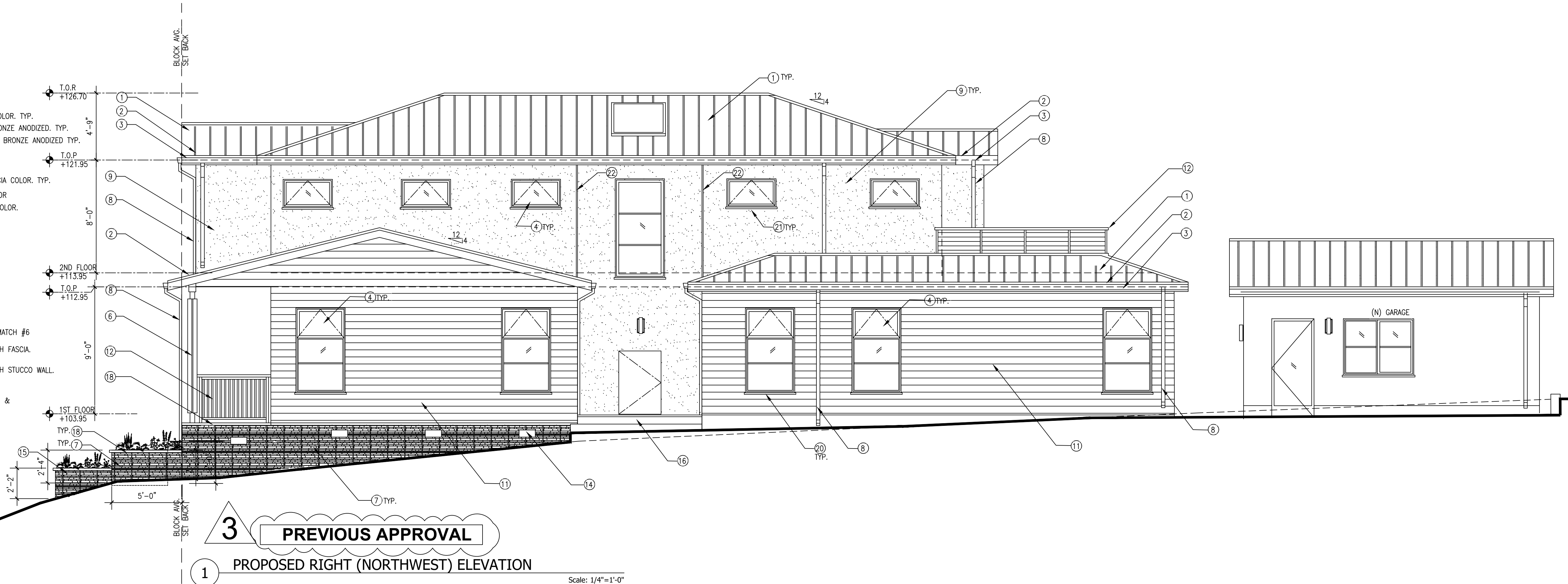
DATE: 1/28/20
SCALE: AS SHOWN
DRAWN BY: WILSON NG
WILSON NG

SHEET NO.
A-3.1a

SHEETS

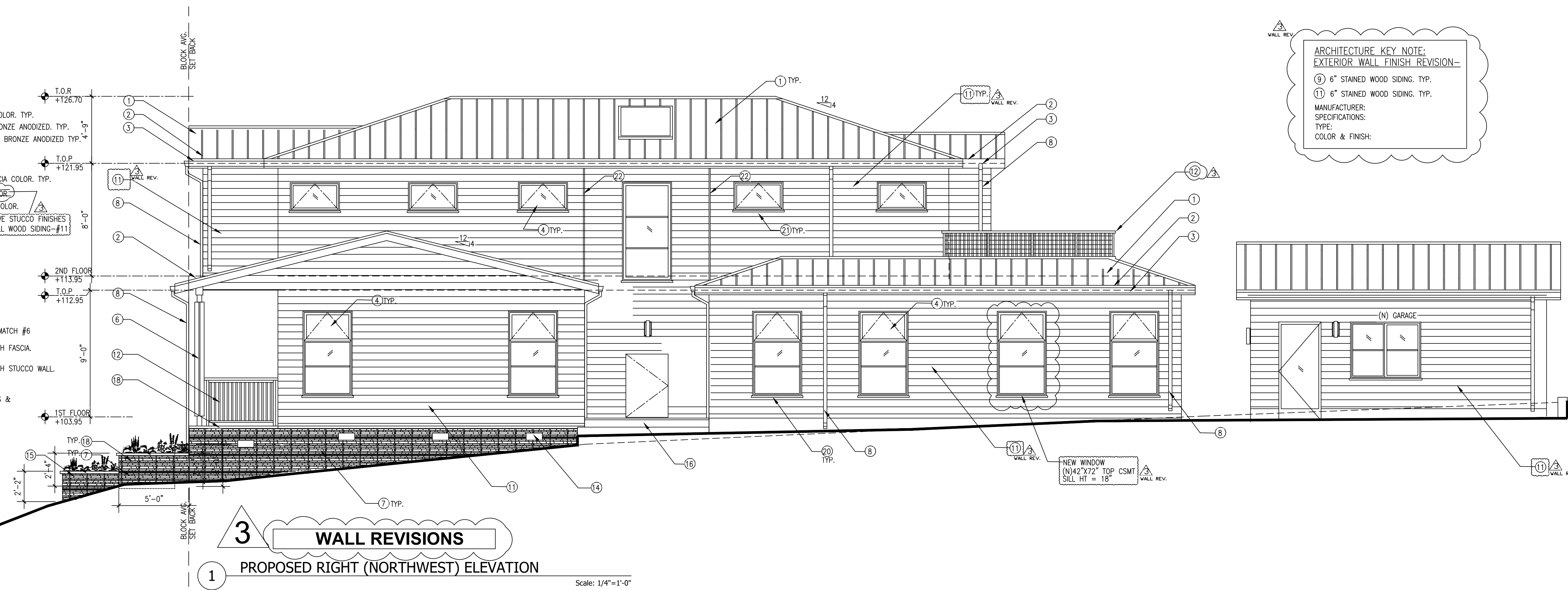
ARCHITECTURE KEY NOTE:

- 1 METAL ROOF IN SLATE GREY, TYP.
- 2 2"x8" PAINTED WOOD FASCIA BOARD, PAINT TO MATCH ROOF COLOR, TYP.
- 3 4.5" GALV. GUTTER, PAINT TO MATCH FASCIA COLOR, TYP.
- 4 MILGARD 910 SERIES ALUMINUM WINDOW IN BRONZE ANODIZED TYP.
- 5 MILGARD STANDARD ALUMINUM SLIDING DOOR IN BRONZE ANODIZED TYP.
- 6 STEEL POST COVERED BY STAINED WOOD
- 7 SLATE LEDGER VENEERS (GRAY COLOR) TYP.
- 8 2"x3" GALV. DOWNSPOUT PAINT TO MATCH FASCIA COLOR, TYP.
- 9 SMOOTH STUCCO FINISHES, WHITEST WHITE COLOR
- 10 2"x8" WOOD BAND PAINTED WITH LIGHT GRAY COLOR.
- 11 6" STAINED WOOD SIDING, TYP.
- 12 STEEL CABLE RAILING TOPPED WITH WOOD TYP.
- 13 STAINED CEDAR CONTEMPORARY WOOD STRIP DOOR WITH SIDELITE.
- 14 CRAWL SPACE VENTS
- 15 PLANTER
- 16 CIRCULAR WOOD DECK
- 17 EXTERIOR LIGHT FIXTURE
- 18 TOP FINISHED WITH LIGHT GRAY BLUESTONE
- 19 STRUCTURAL BEAM COVER BY STAINED WOOD, MATCH #6
- 20 PAINTED WOOD WINDOW SILL MATCH COLOR WITH FASCIA. (FOR WINDOWS IN STAINED WOOD SIDING) TYP.
- 21 PAINTED WOOD WINDOW SILL MATCH COLOR WITH STUCCO WALL. (FOR WINDOWS IN STUCCO WALL) TYP.
- 22 STUCCO CONTROL JOINT
- 23 NEW STAIR, SLATE LEDGER VENEERS ON RISERS & LIGHT GRAY BLUESTONE ON TREAD



ARCHITECTURE KEY NOTE:

- 1 METAL ROOF IN SLATE GREY, TYP.
- 2 2"x8" PAINTED WOOD FASCIA BOARD, PAINT TO MATCH ROOF COLOR, TYP.
- 3 4.5" GALV. GUTTER, PAINT TO MATCH FASCIA COLOR, TYP.
- 4 MILGARD 910 SERIES ALUMINUM WINDOW IN BRONZE ANODIZED TYP.
- 5 MILGARD STANDARD ALUMINUM SLIDING DOOR IN BRONZE ANODIZED TYP.
- 6 STEEL POST COVERED BY STAINED WOOD
- 7 SLATE LEDGER VENEERS (GRAY COLOR) TYP.
- 8 2"x3" GALV. DOWNSPOUT PAINT TO MATCH FASCIA COLOR, TYP.
- 9 SMOOTH STUCCO FINISHES, WHITEST WHITE COLOR.
- 10 2"x8" WOOD BAND PAINTED WITH LIGHT GRAY COLOR.
- 11 6" WHITE WOOD SIDING, TYP. REMOVE STUCCO FINISHES
- 12 WOOD RAILING TOPPED WITH WOOD TYP. INSTALL WOOD SIDING-#11
- 13 STAINED CEDAR CONTEMPORARY WOOD STRIP DOOR WITH SIDELITE.
- 14 CRAWL SPACE VENTS
- 15 PLANTER
- 16 CIRCULAR WOOD DECK
- 17 EXTERIOR LIGHT FIXTURE
- 18 TOP FINISHED WITH LIGHT GRAY BLUESTONE
- 19 STRUCTURAL BEAM COVER BY STAINED WOOD, MATCH #6
- 20 PAINTED WOOD WINDOW SILL MATCH COLOR WITH FASCIA. (FOR WINDOWS IN STAINED WOOD SIDING) TYP.
- 21 PAINTED WOOD WINDOW SILL MATCH COLOR WITH STUCCO WALL. (FOR WINDOWS IN STUCCO WALL) TYP.
- 22 STUCCO CONTROL JOINT
- 23 NEW STAIR, SLATE LEDGER VENEERS ON RISERS & LIGHT GRAY BLUESTONE ON TREAD



ARCHITECTURE KEY NOTE:
EXTERIOR WALL FINISH REVISION--

- 9 6" STAINED WOOD SIDING, TYP.
- 11 6" STAINED WOOD SIDING, TYP.

MANUFACTURER:
SPECIFICATIONS:
TYPE:
COLOR & FINISH:

NEW WINDOW
(N) 42"x72" TOP CSMT
SILL HT = 18"

3 WALL REVISIONS
1 PROPOSED RIGHT (NORTHWEST) ELEVATION

Scale: 1/4"=1'-0"

REVISIONS:		
1	B20-0044	6/25/20
2	B20-0044	8/13/20
3	WALL REVISION	4/21/22
4		
5		

**SJA DEVELOPMENT-
LLC**
DESIGN DIVISION
562 BRYANT STREET TEL (415) 684-0632
SAN FRANCISCO, CA 94107

**NEW SINGLE FAMILY ADDITION FOR
RESIDENCE OF
1345 VANCOUVER AVE.
BURLINGAME, CA 94010**

PROPOSED
RIGHT (NORTHWEST)
ELEVATIONS

DATE: 2/7/20
SCALE: AS SHOWN
DRAWN BY: WILSON NG

SHEET NO.
A-3.1b

SHEETS

REVISIONS:	
1	B20-0044 6/25/20
2	B20-0044 9/9/20
3	WALL REVISION 4/21/22
4	
5	

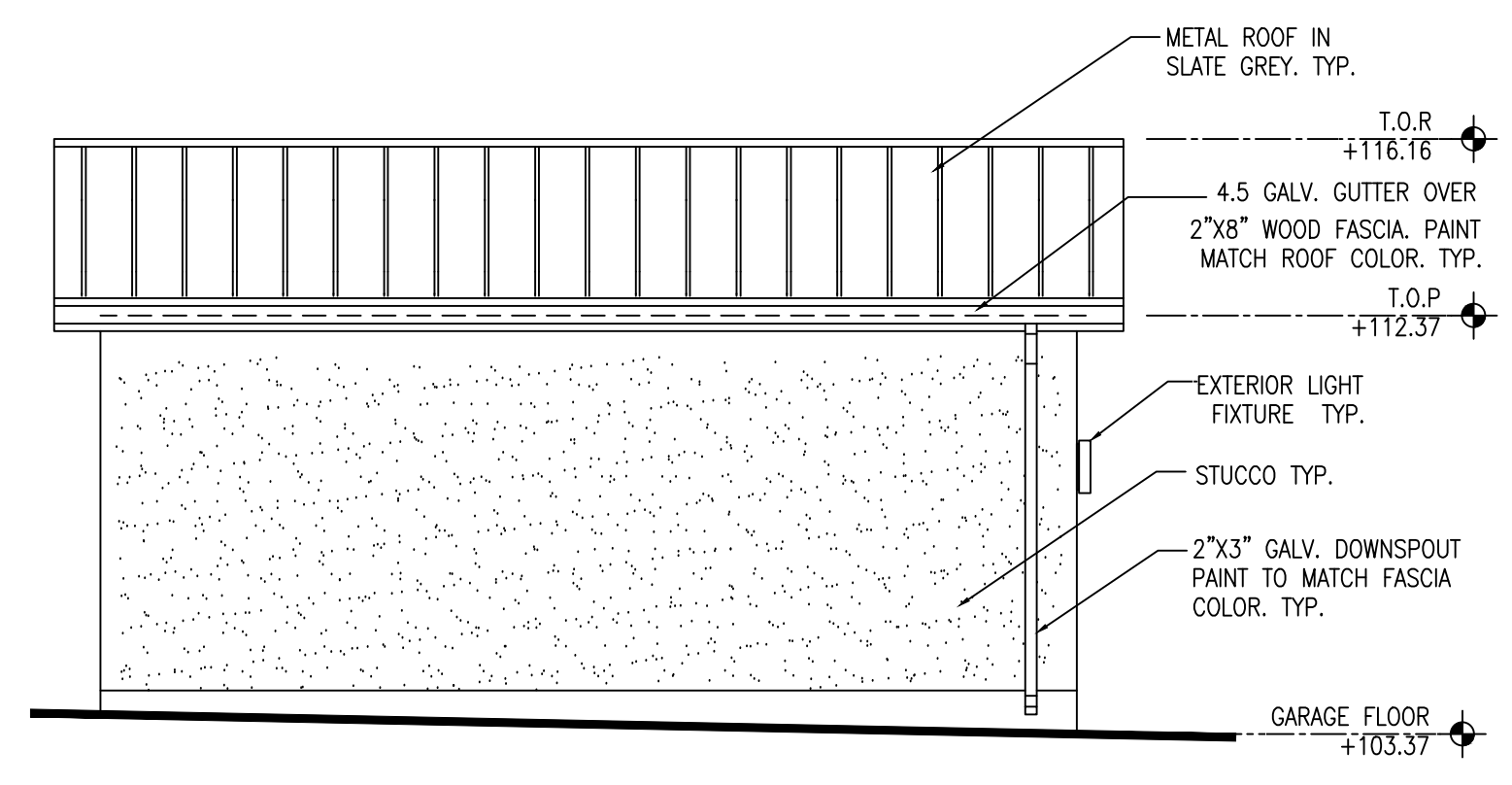
**SJA DEVELOPMENT-
LLC**
DESIGN DIVISION
562 BRYANT STREET TEL (415) 684-0632
SAN FRANCISCO, CA 94107

**NEW SINGLE FAMILY ADDITION FOR
RESIDENCE OF
1345 VANCOUVER AVE.
BURLINGAME, CA 94010**

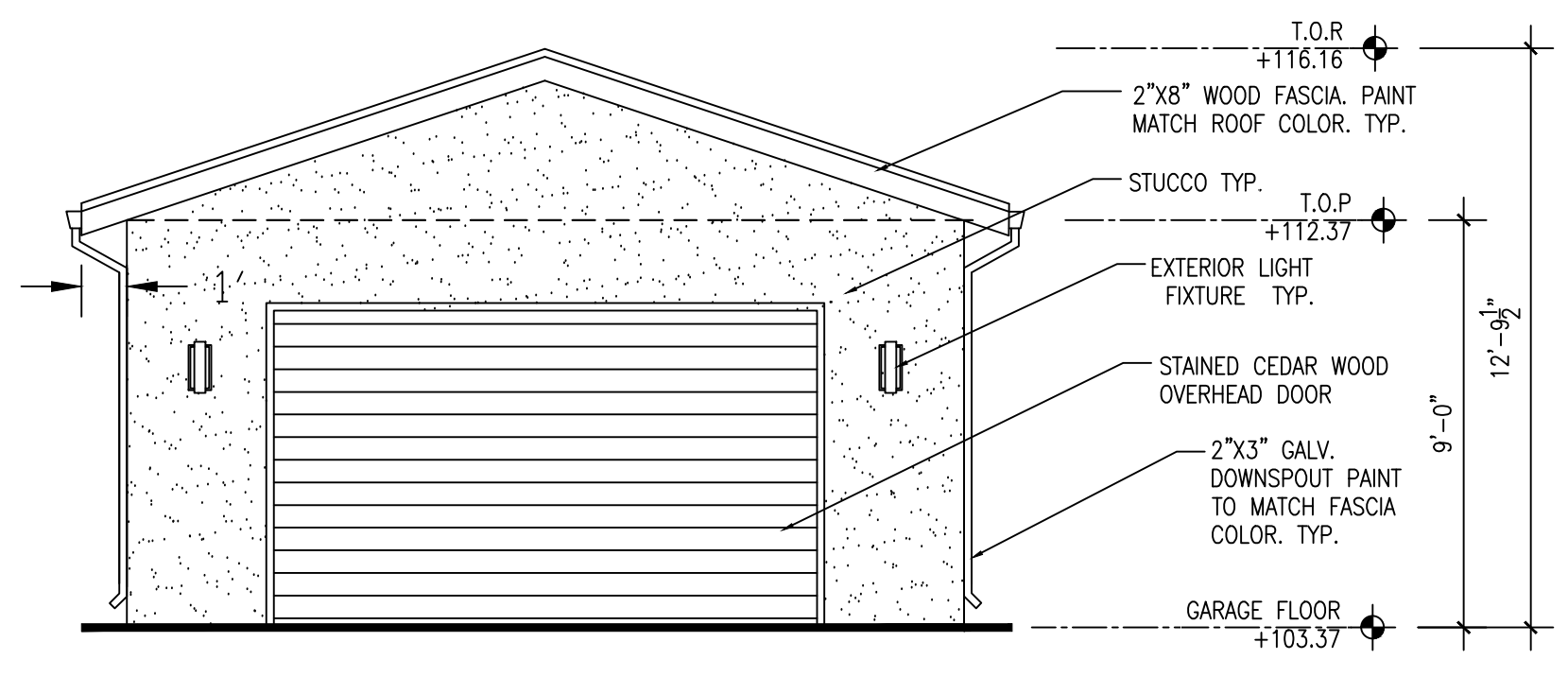
PROPOSED GARAGE
FLOOR, ROOF PLAN
& ELEVATIONS

DATE: 2/7/20
SCALE: AS SHOWN
DRAWN BY: WILSON NG

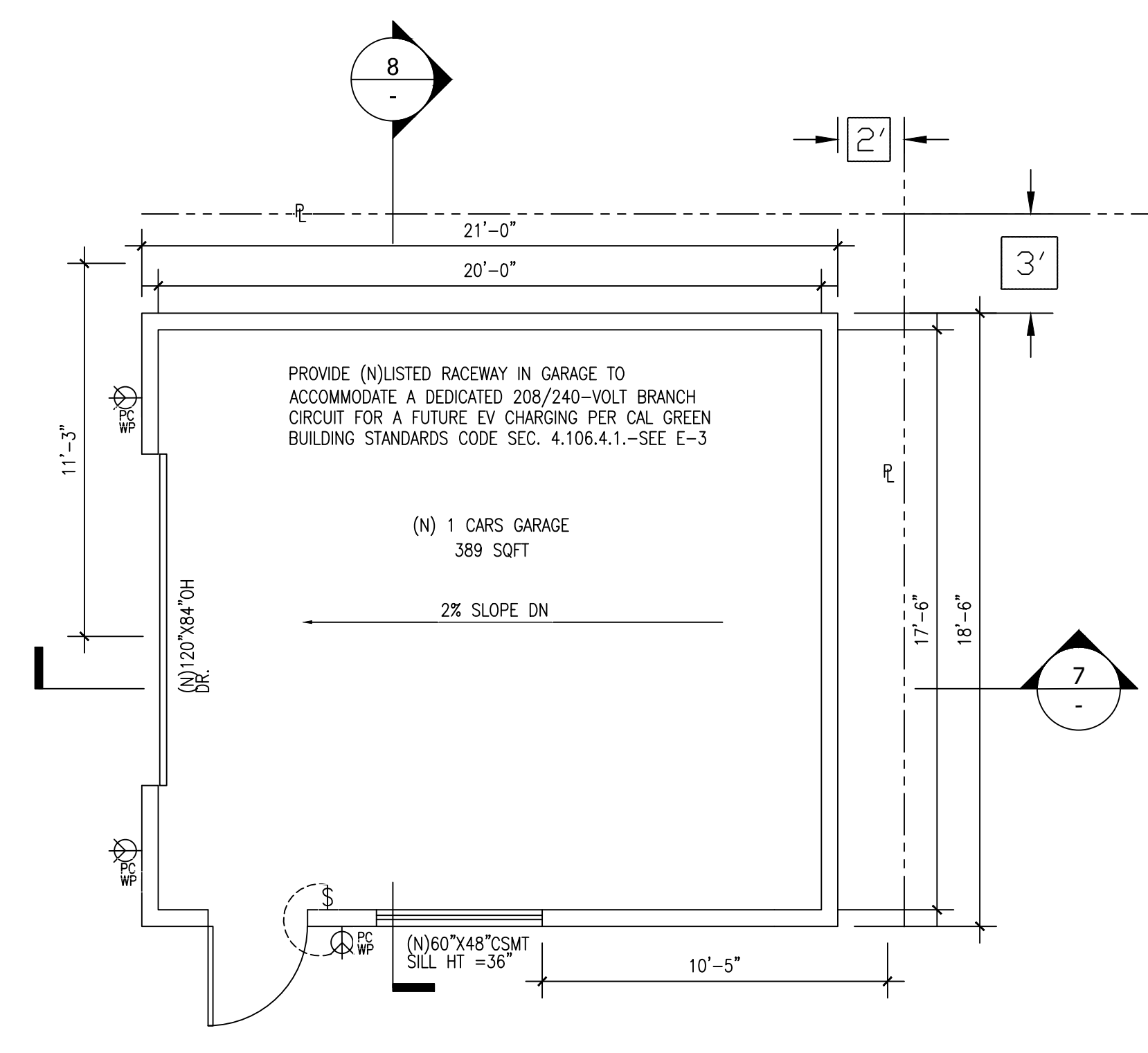
SHEET NO.
A-4.0a
SHEETS



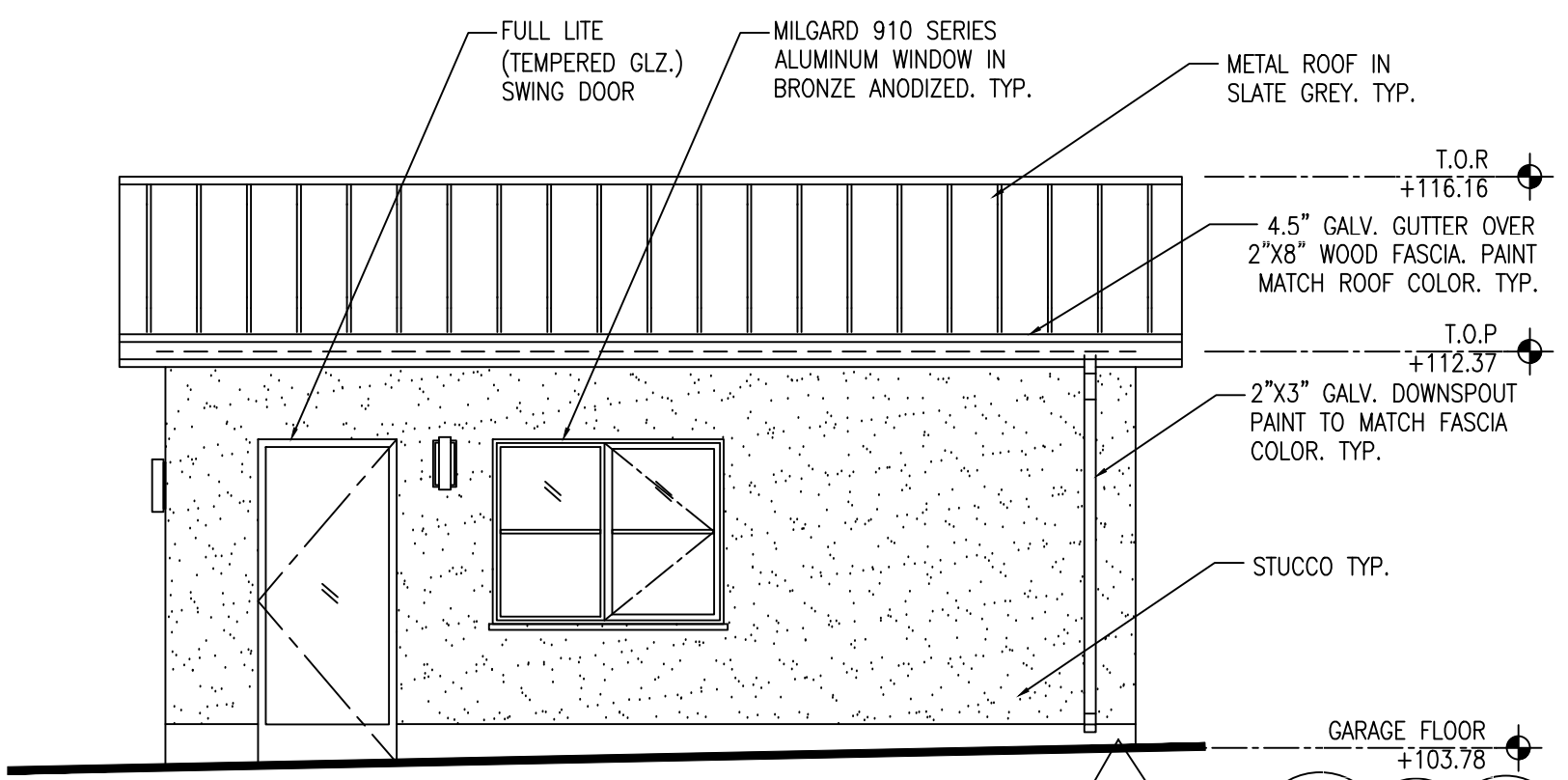
5 PROPOSED LEFT (SE) ELEVATION
Scale: 1/4"=1'-0"



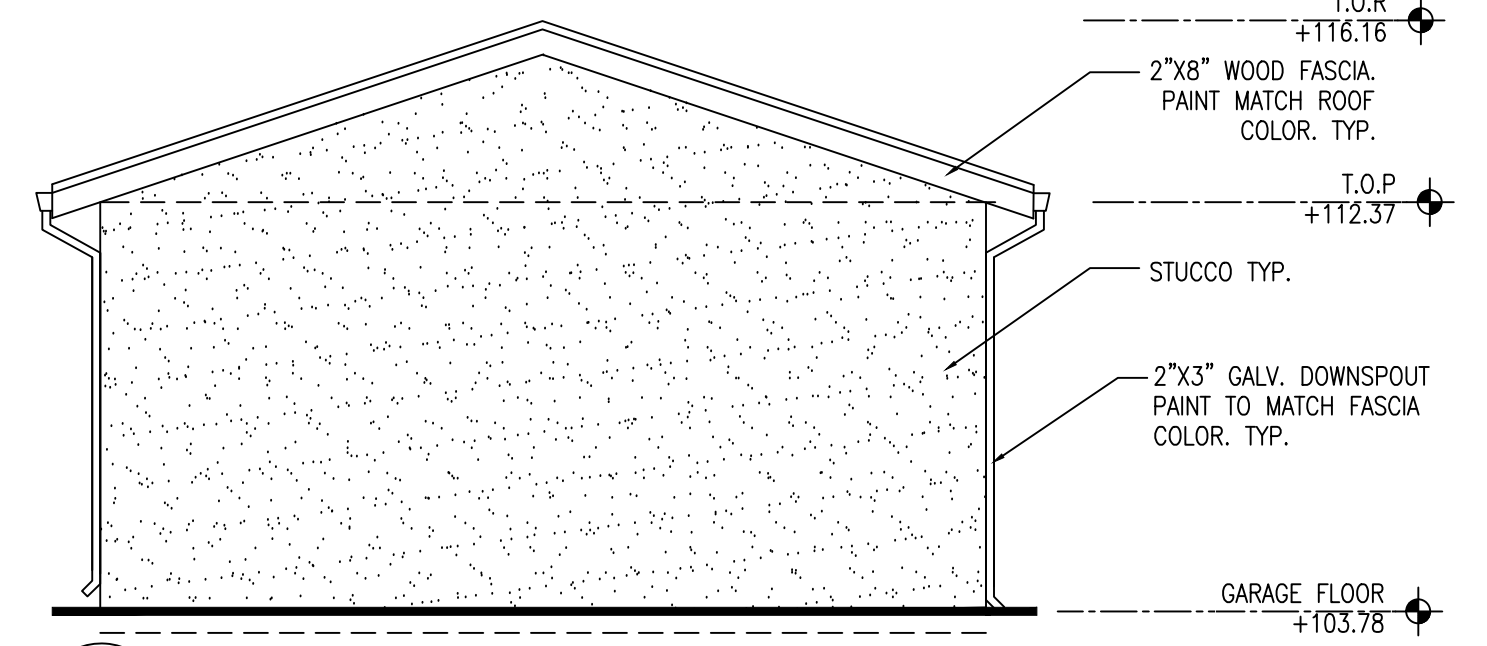
3 PROPOSED FRONT (NE) ELEVATION
Scale: 1/4"=1'-0"



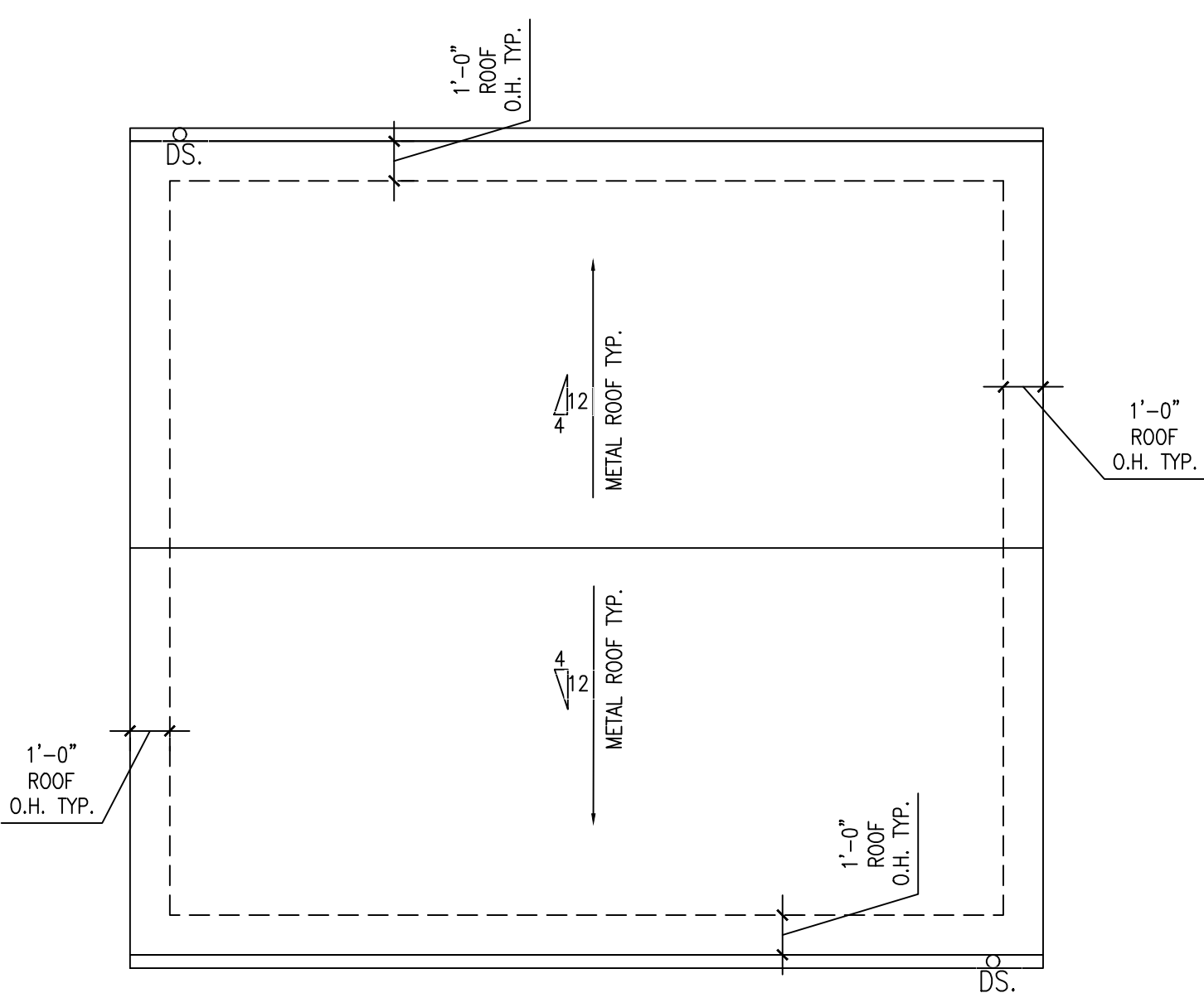
1 PROPOSED GARAGE FLOOR PLAN
Scale: 1/4"=1'-0"



6 PROPOSED RIGHT (NW) ELEVATION
Scale: 1/4"=1'-0"



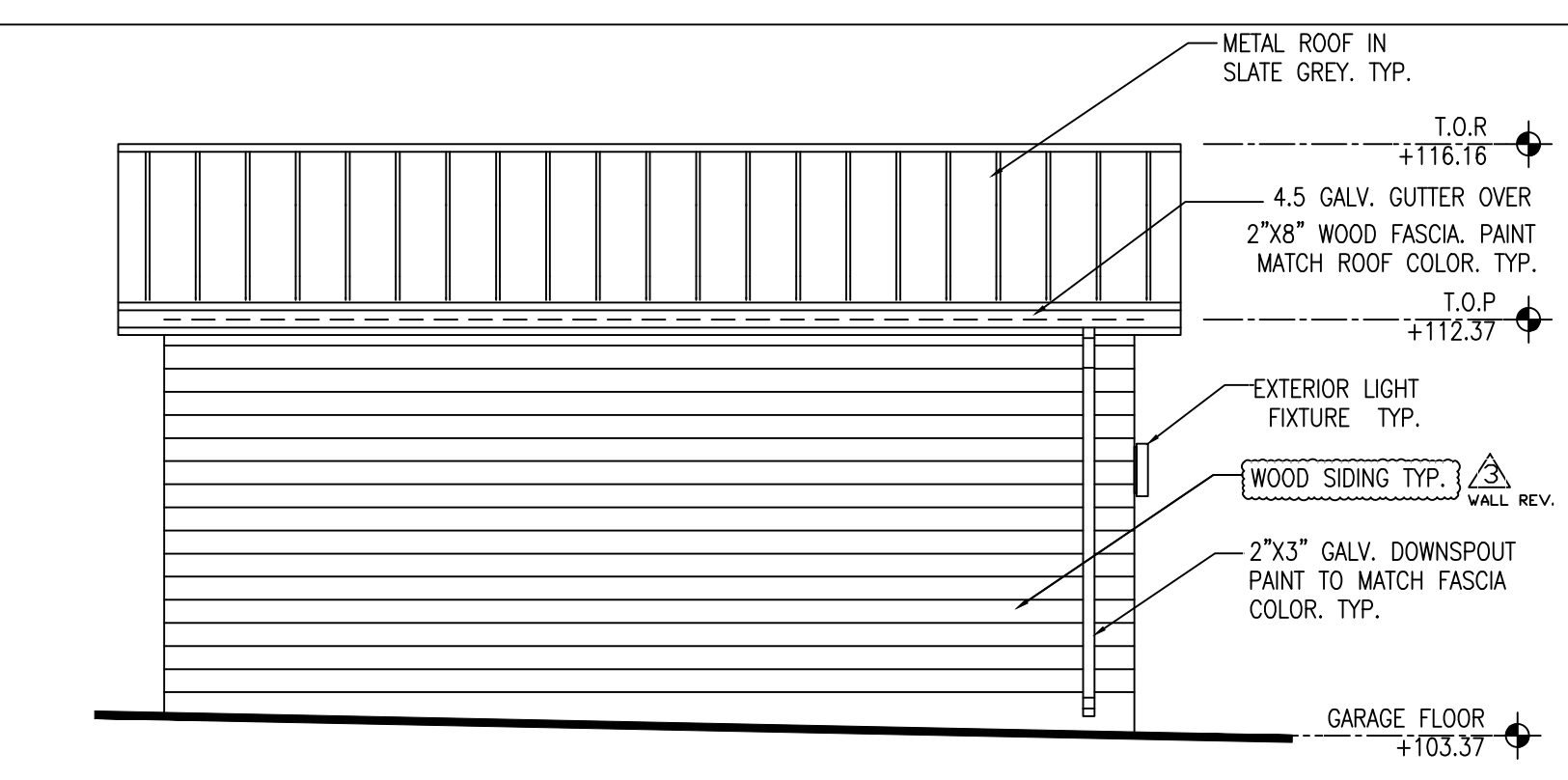
4 PROPOSED REAR (SW) ELEVATION
Scale: 1/4"=1'-0"



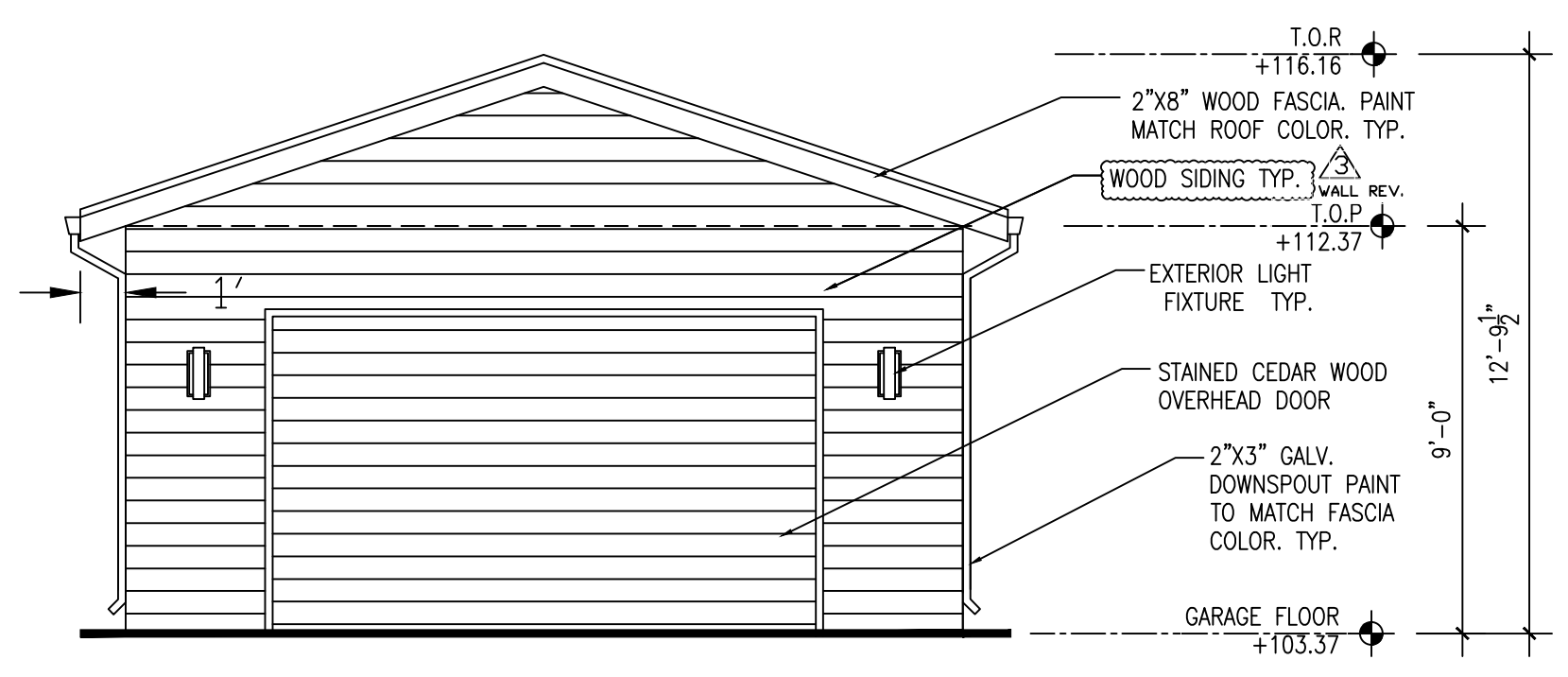
2 PROPOSED GARAGE ROOF PLAN
Scale: 1/4"=1'-0"

ROOF EAVE NOTE:
ROOF EAVE PROJECTION AT THE NEW ADDITION SIDE THAT PROJECTED OVER 5' PROPERTY LINE SETBACK, PROJECTION FROM THE EXTERIOR FACE OF WALL TO BE MIN. 1 HOUR FIRE RESISTANCE RATING AT THE EAVE UNDERSIDE (CRC TABLE R302.1(1)). SEE DETAIL 5/A5.

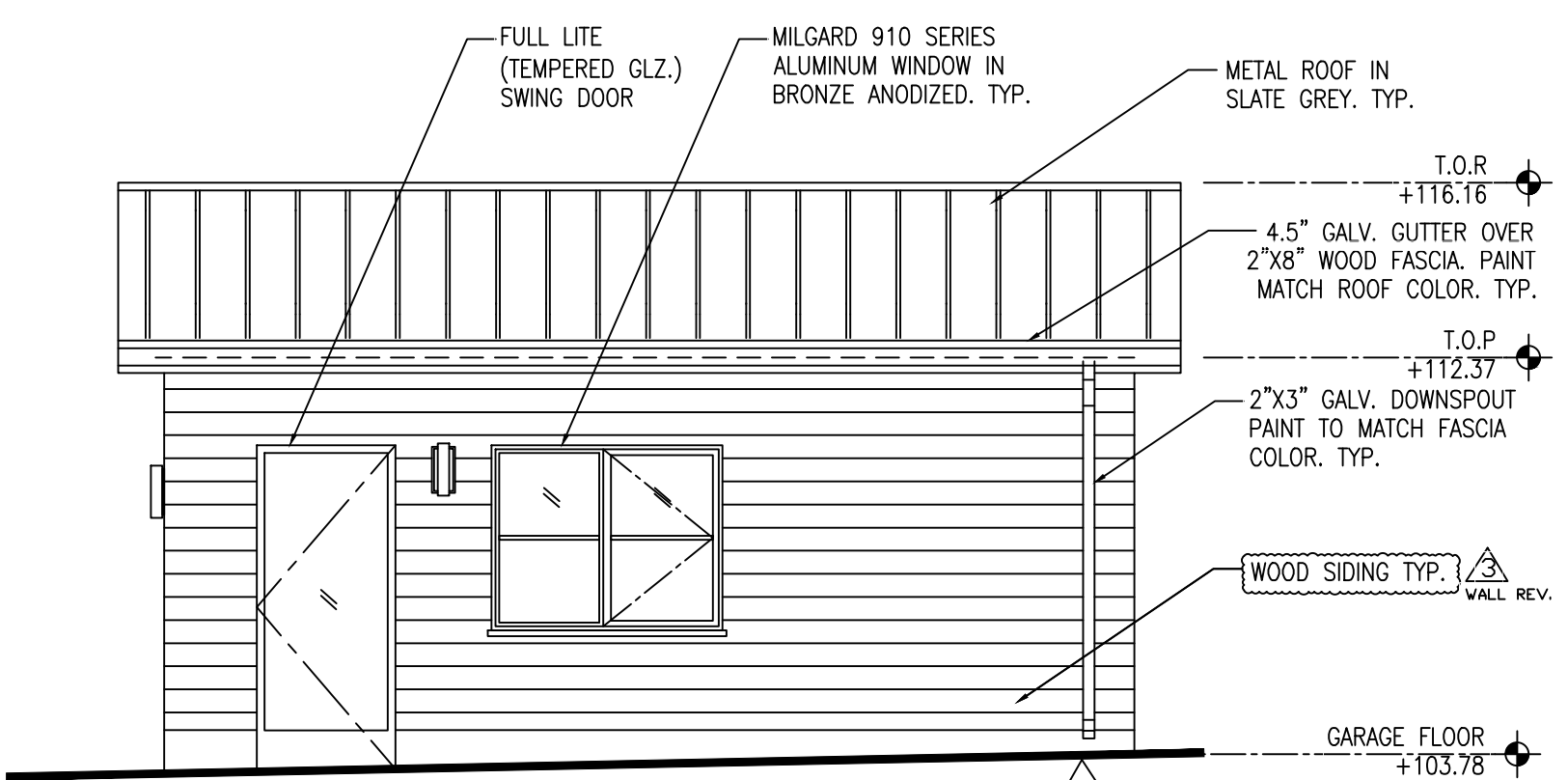
3 PREVIOUS APPROVAL



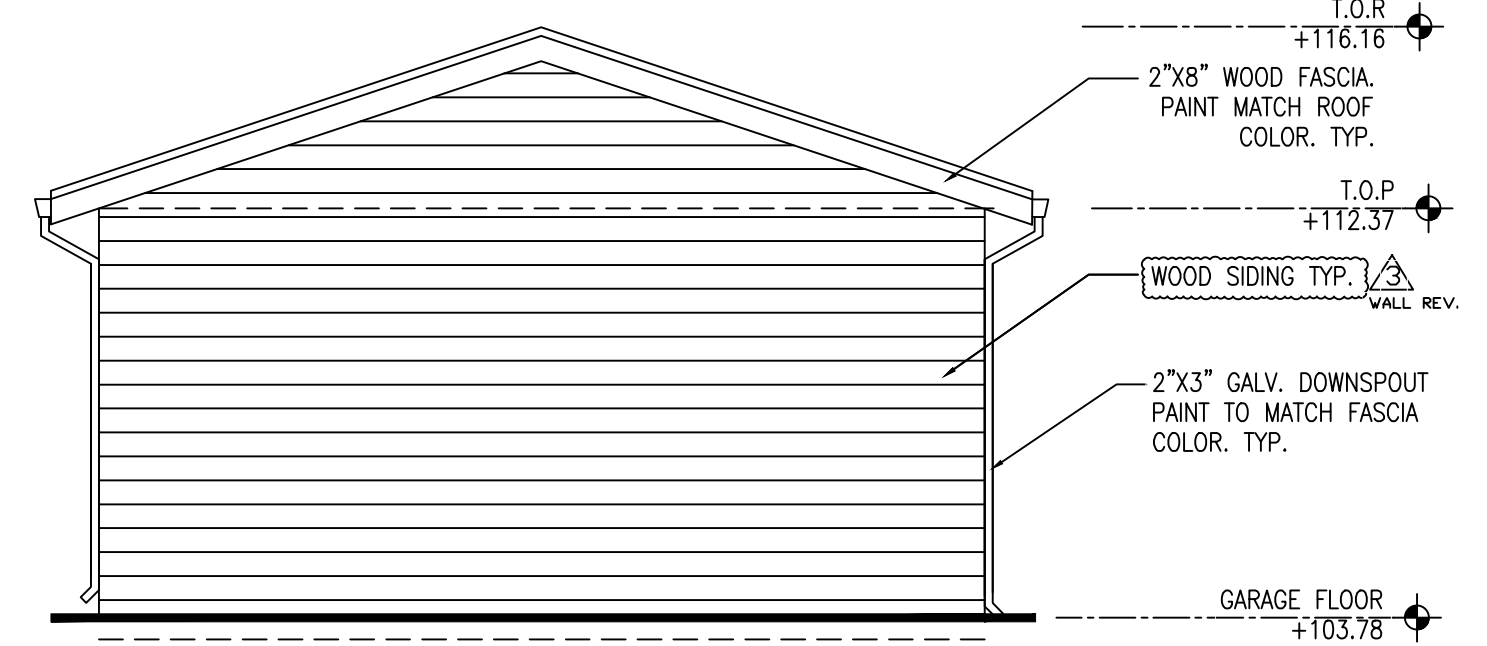
5 PROPOSED LEFT (SE) ELEVATION
Scale: 1/4"=1'-0"



3 PROPOSED FRONT (NE) ELEVATION
Scale: 1/4"=1'-0"



6 PROPOSED RIGHT (NW) ELEVATION
Scale: 1/4"=1'-0"



4 PROPOSED REAR (SW) ELEVATION
Scale: 1/4"=1'-0"

3 PREVIOUS APPROVAL

3 WALL REVISIONS