

City of Burlingame Bicycle & Pedestrian Master Plan



February 14, 2019

Agenda

- Project Goals & Scope
- Task Timeline
- Outreach Plan & Discussion
- Vision & Goals Discussion/Exercise
- Next Steps
- Additional Questions/Comments

Project Goals

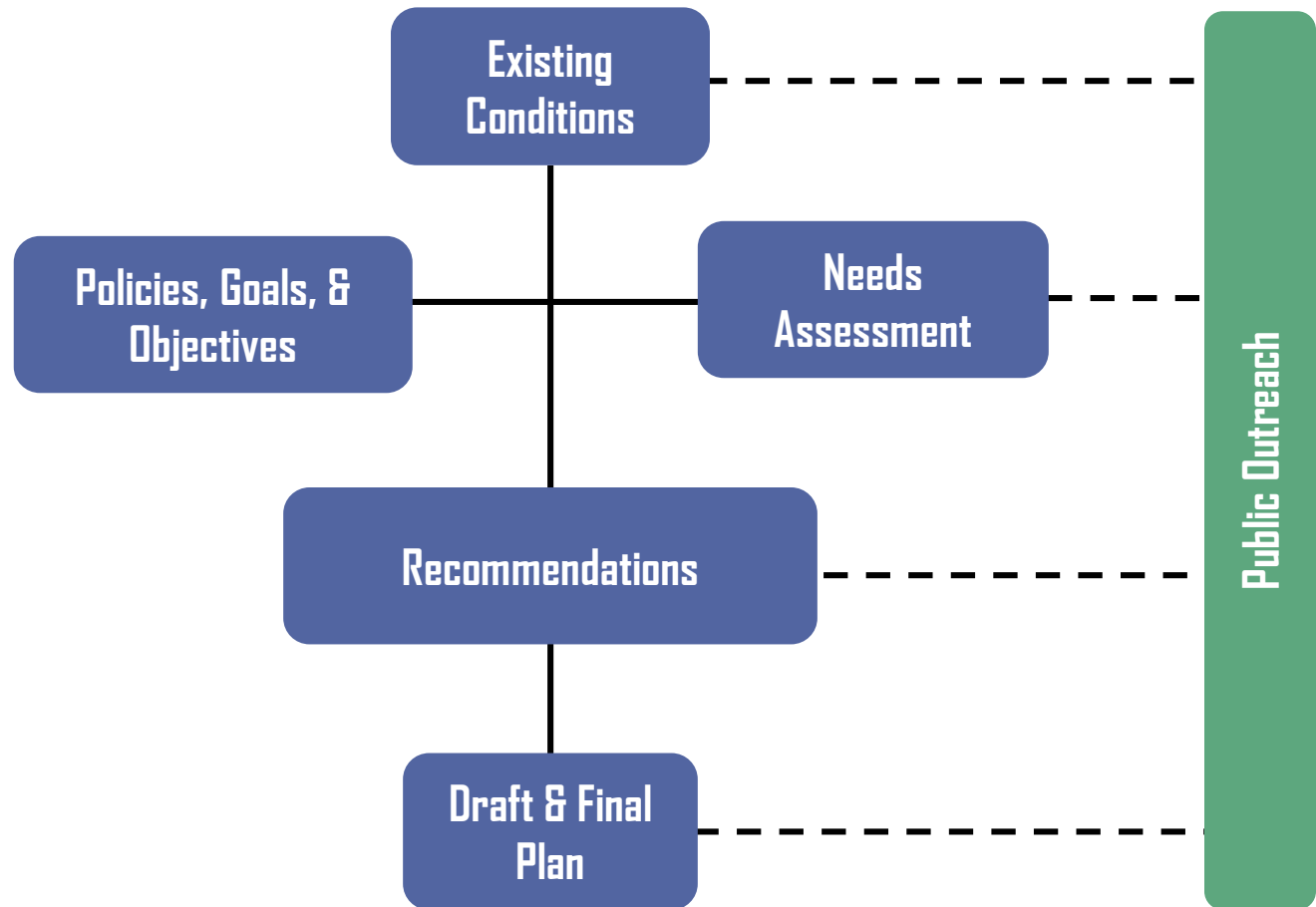
DEVELOP a vision for walking and bicycling in Burlingame that delivers a connected, safe network for users of all ages and abilities

ENGAGE with the community and partner with BPAC and local champions

ASSESS conditions for people walking and bicycling, prioritizing future projects that create meaningful benefits

COORDINATE with City efforts related to housing, TDM, and major infrastructure projects

Scope



Timeline

Phase 1: Existing Conditions

- Winter – Spring 2019

Phase 2: Draft Recommendations

- Summer – Fall 2019

Phase 3: Draft and Final Plan

- Fall 2019 – Winter 2020

The Role of the BPAC

1. Kick-off/Strategy Session (tonight)
 - Discuss priorities for Plan
 - Discuss input and ideas gathered to date
2. Define Needs (April 2018)
 - Review Needs Assessment
 - Collect project & program ideas
3. Review Recommendations (July 2018)
 - Review draft recommendations
4. Review/Endorse Plan (Nov 2018)
 - Review and endorse Draft Plan

Public Engagement Plan

- BPAC meetings (4)
- Online Community Input Map
- Walking Tour (1)
- Bicycling Tour (1)
- Pop-up Workshops
- Community Workshops (3)



Pause for Questions

- Questions on the Plan process?
- Potential pop-up workshop locations?
- Groups and stakeholders to engage in events?

BPAC Mission

To improve the safety, health, and quality of life for the citizens of Burlingame by advocating for the needs of pedestrians and bicyclists in order to ensure their interests are included with regards to Burlingame's goals, policies, programs, infrastructure projects, studies, related proposals, and events.

Goals

Plan
elements

BPAC Goals for Plan

A safe, usable and low-stress network designed for all ages and abilities that allows people to travel between their homes to and among key Burlingame locations. It must be:

- Comprehensive – bicycle and pedestrian
- Effective – sets up successful projects + grant applications
- Enduring – useful for the next decade and beyond

Vision

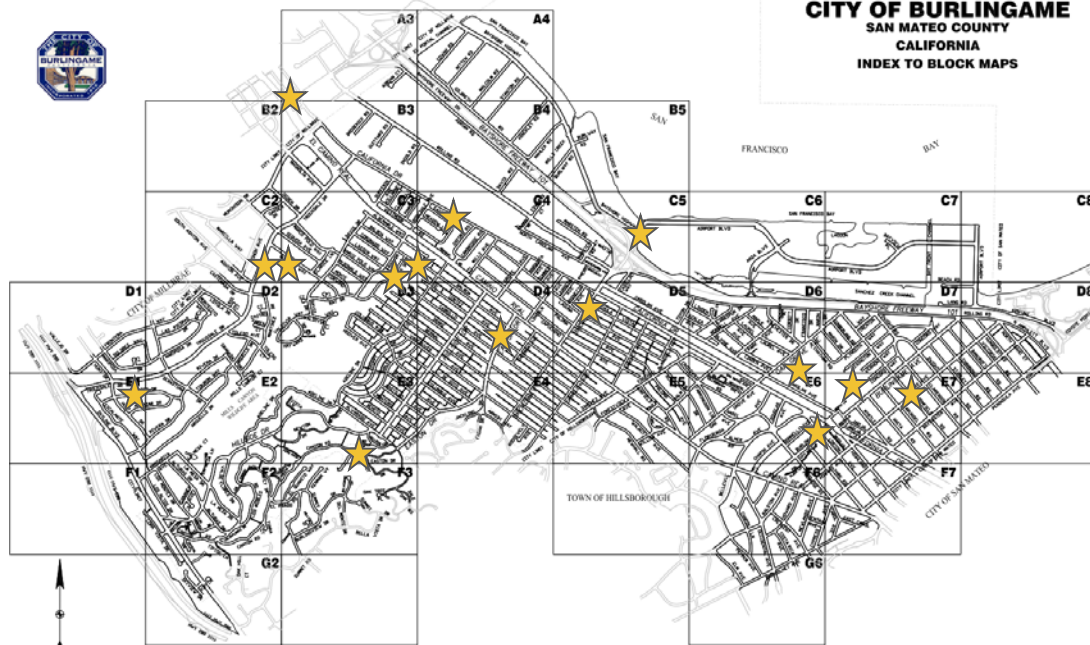
Description
of the
process

Identification of Needs

- Key destinations you want to be able to reach by walking or biking?
- Barriers/challenges to walking and biking?
- Network gaps
- Other



1. Identify key destinations

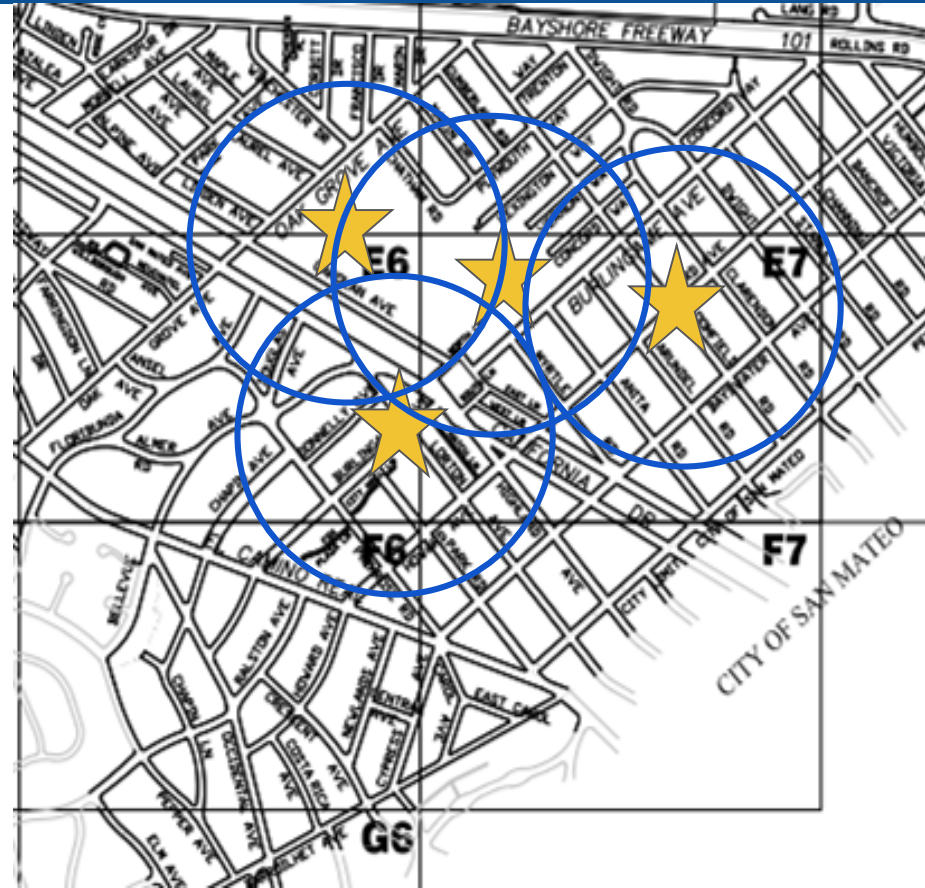


1. Downtown Burlingame (including Caltrain + Rec Center)
2. Broadway Downtown area
3. Burlingame High School
4. Burlingame Intermediate School
5. Bayshore
6. Millbrae Caltrain/BART station
7. Other schools, libraries, parks, shopping zones

2. Designate pedestrian

Establish $\frac{1}{4}$ mile radius around key destinations as 'pedestrian zones':

- Areas of focus for pedestrian-friendly construction
- Established standards for walkability
- Pedestrian-friendly speed limits + enforcement
- Outreach + education with schools to promote walk to school



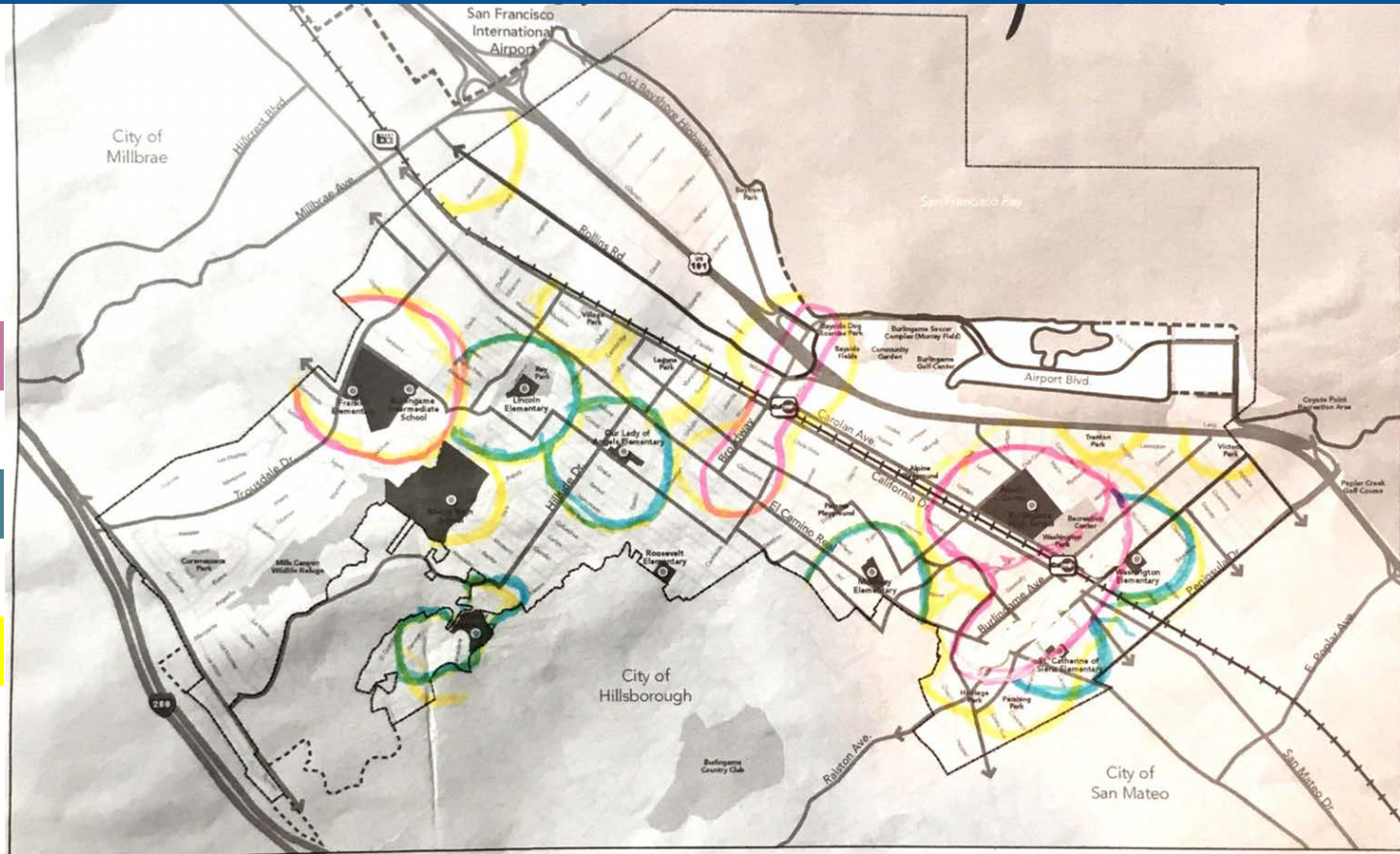
3. Pedestrian Standards

Three levels
of pedestrian
zones:

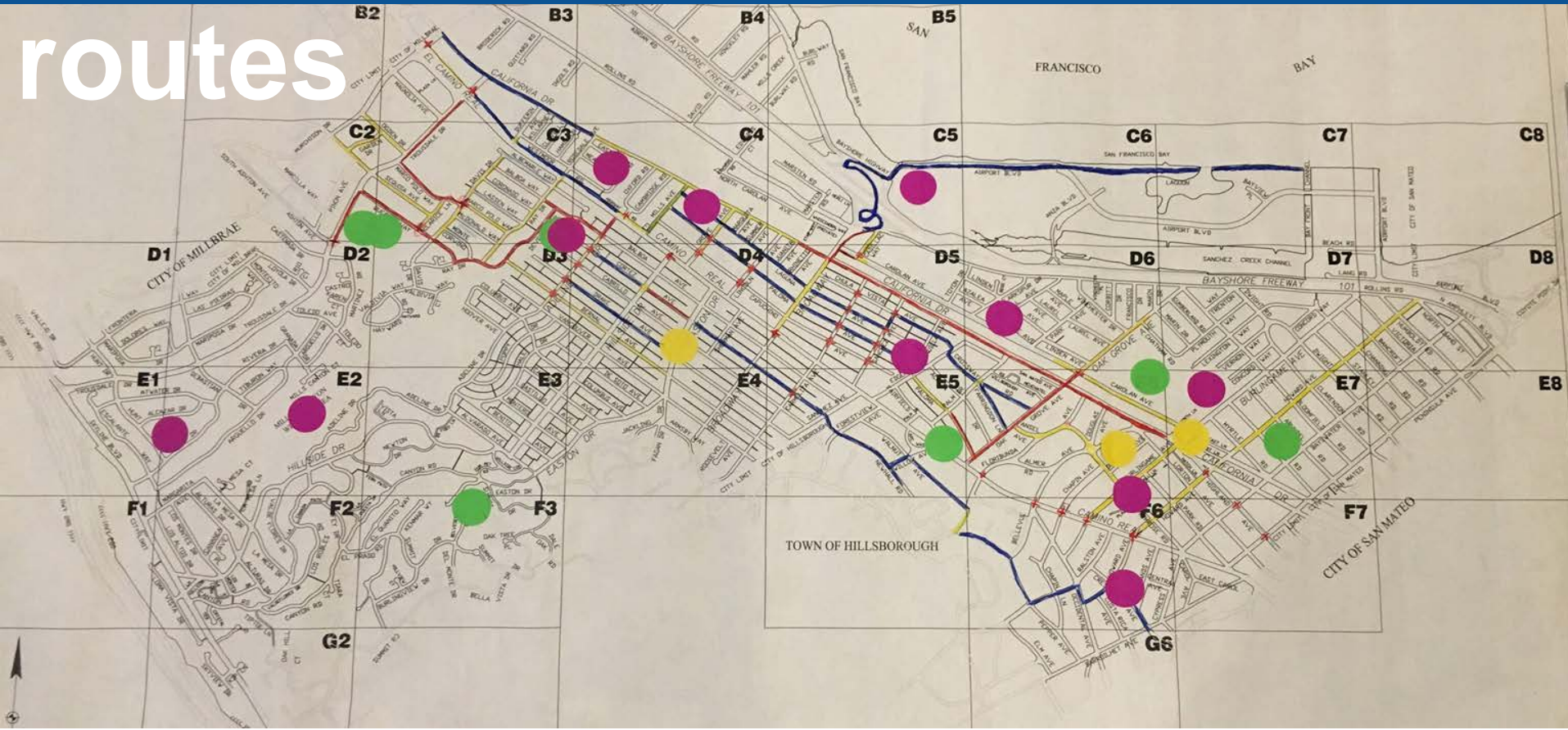
Zone 1

Zone 2

Zone 3



4. Identify common bike routes



Level of Traffic Stress



LTS 1
All Ages and Abilities



LTS 2
Interested but Concerned



LTS 3
Enthusied and Confident



LTS 4
Strong and Fearless

Level of Traffic Stress

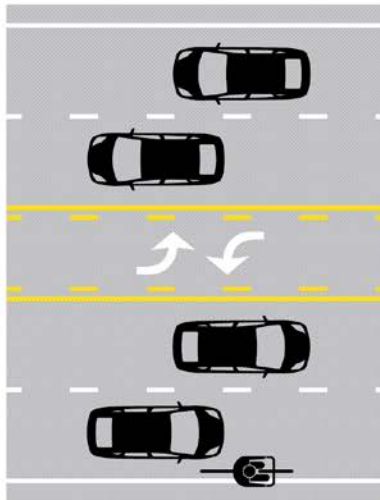
INCREASING LEVEL OF COMFORT, SAFETY, AND INTEREST IN BICYCLING FOR TRANSPORTATION

LTS 4

No bike lane on a busy street



percent of likely bicyclists willing to use this facility

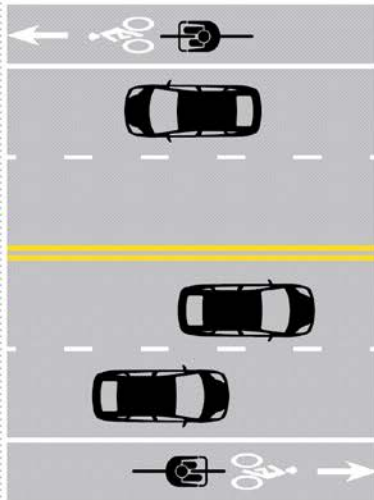


LTS 3

Narrow bike lane or shoulder on a busy street



percent of likely bicyclists willing to use this facility

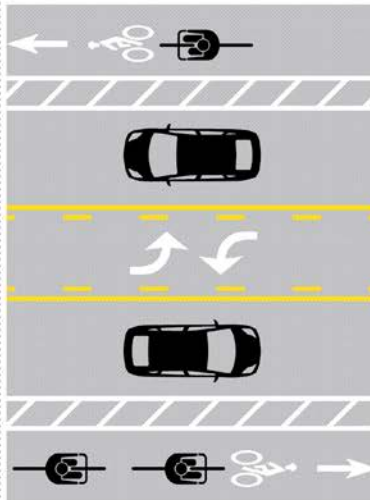


LTS 2

Buffered bike lane on a calm street



percent of likely bicyclists willing to use this facility

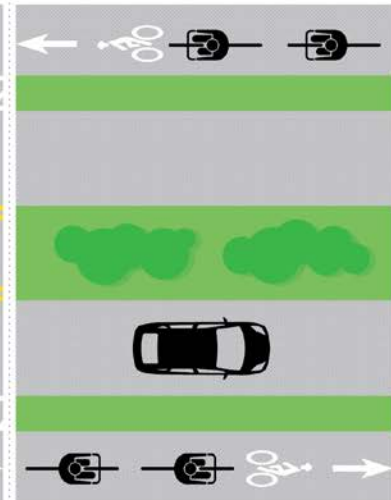


LTS 1

Separated bike lane



percent of likely bicyclists willing to use this facility



Next Steps

- Launch website and interactive map
- Solicit feedback through online map
- Finalize Pop-Up locations for Phase 1
- Begin assessment of existing conditions



Questions?

