

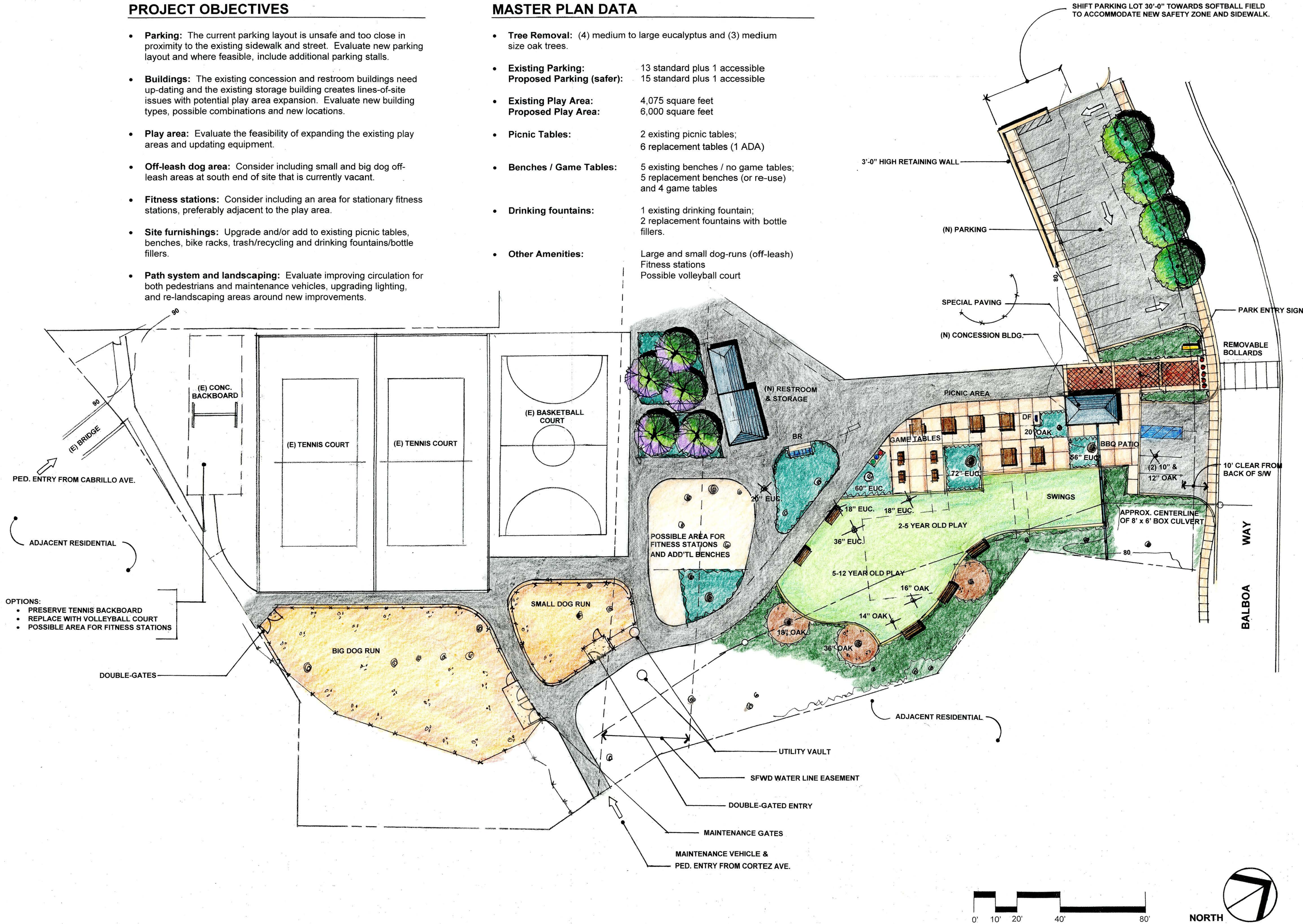
PROJECT OBJECTIVES

- Parking:** The current parking layout is unsafe and too close in proximity to the existing sidewalk and street. Evaluate new parking layout and where feasible, include additional parking stalls.
- Buildings:** The existing concession and restroom buildings need up-dating and the existing storage building creates lines-of-site issues with potential play area expansion. Evaluate new building types, possible combinations and new locations.
- Play area:** Evaluate the feasibility of expanding the existing play areas and updating equipment.
- Off-leash dog area:** Consider including small and big dog off-leash areas at south end of site that is currently vacant.
- Fitness stations:** Consider including an area for stationary fitness stations, preferably adjacent to the play area.
- Site furnishings:** Upgrade and/or add to existing picnic tables, benches, bike racks, trash/recycling and drinking fountains/bottle fillers.
- Path system and landscaping:** Evaluate improving circulation for both pedestrians and maintenance vehicles, upgrading lighting, and re-landscaping areas around new improvements.

MASTER PLAN DATA

- Tree Removal:** (4) medium to large eucalyptus and (3) medium size oak trees.
- Existing Parking:** 13 standard plus 1 accessible
Proposed Parking (safer): 15 standard plus 1 accessible
- Existing Play Area:** 4,075 square feet
Proposed Play Area: 6,000 square feet
- Picnic Tables:** 2 existing picnic tables;
6 replacement tables (1 ADA)
- Benches / Game Tables:** 5 existing benches / no game tables;
5 replacement benches (or re-use) and 4 game tables
- Drinking fountains:** 1 existing drinking fountain;
2 replacement fountains with bottle fillers.
- Other Amenities:** Large and small dog-runs (off-leash)
Fitness stations
Possible volleyball court

Exhibit B



REVISIONS	BY

JOHN CANALAN
LANDSCAPE ARCHITECT
15559 Union Avenue
Suite 206 • Los Gatos, CA 95032
T 408.358.5172 • F 408.358.5133
© Reg. No. 1894

SITE PLAN

RAY PARK PLAY AREA RENOVATION

City of Burlingame, Parks & Recreation Department

DRAWN
BL

CHECKED
JC

DATE
5/1/18

SCALE
AS SHOWN

JOB NO.
16.005

SHEET

1

OF 2 SHEETS

REVISIONS	BY

JOHN CAHALAN
LANDSCAPE ARCHITECT
15555 Buena Avenue
Suite 205 • Los Gatos, CA 95032
T 408.358.1121 • F 408.358.1130
© 1998, 2014



ENLARGED PLAY AREA

RAY PARK PLAY AREA RENOVATION

City of Burlingame, Parks & Recreation Department

DRAWN	BL
CHECKED	JC
DATE	5/1/18
SCALE	AS SHOWN
JOB NO.	16.005
SHEET	2
OF 2	SHEETS

“AND THE SURVEY SAYS”

NOTE: A neighborhood survey was conducted to establish what types of park site features and play area elements were desirable. The survey was met with an enthusiastic response, and this input was then evaluated by the Paloma Park Play Area Committee. The following is a representative sample of comments:

- Possible dog park area behind the tennis courts
- Continuous paths for bike riding
- Bike racks
- Additional seating / benches / picnic tables
- Trellis?
- Teen elements – ping-pong, chess table, corn hole, bocce, volleyball
- Combine restroom and park storage
- Need more swings
- Do not replicate play elements at Lincoln or Village
- Include water fountain with bottle-filler
- Spot for pull-up bars, fitness equipment
- Include a sidewalk in front of the parking spaces (safety)
- Be conscious of visibility issues
- Provide required ADA parking
- Consider path lighting

In addition to the survey, three classrooms at Lincoln Elementary (2nd, 4th and 5th grades) also provided input, (primarily focused on the play area elements) - this has also been documented.

PLAY SPACE SIZE

- EXISTING PLAY AREA: 4,075 SF
- PROPOSED PLAY AREA: 6,000 SF

