



For Release: Tuesday, March 12, 2019

19-365-SAN

WESTERN INFORMATION OFFICE: San Francisco, Calif.

Technical information: (415) 625-2270 BLSinfoSF@bls.gov www.bls.gov/regions/west

Media contact: (415) 625-2270

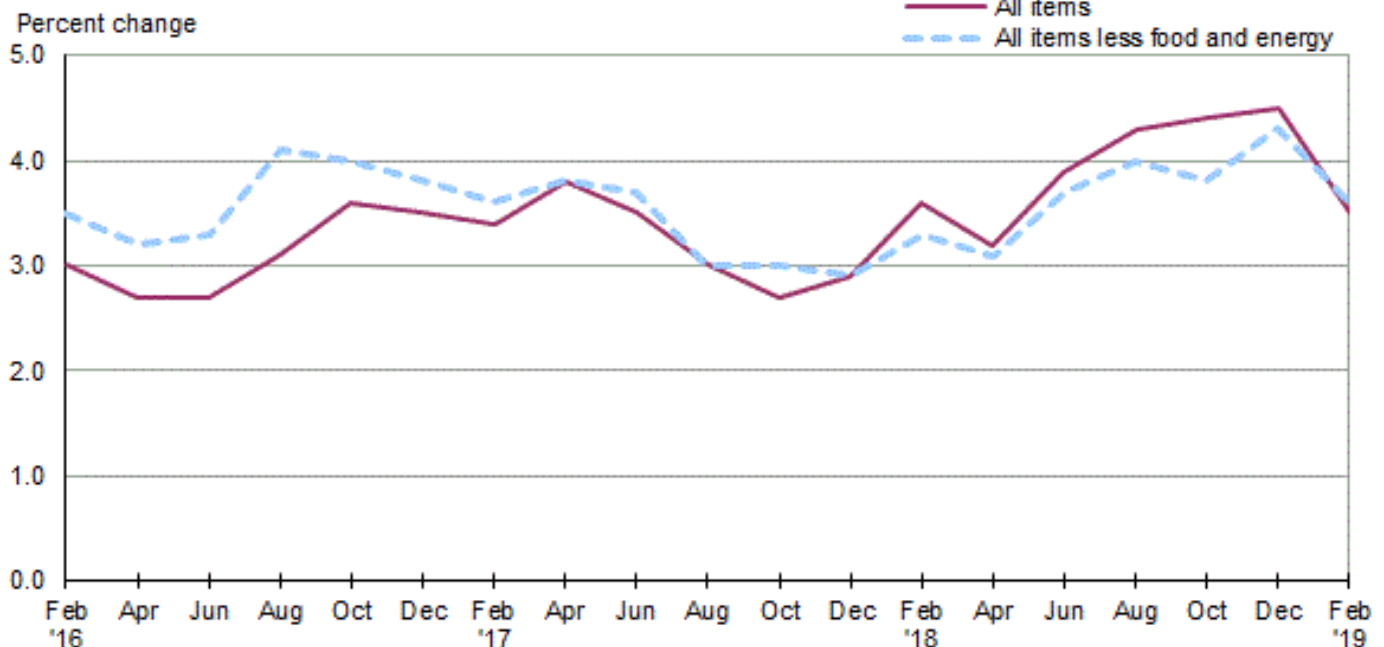
Consumer Price Index, San Francisco Area — February 2019

Area prices were up 0.5 percent over the past two months, up 3.5 percent from a year ago

Prices in the San Francisco area, as measured by the Consumer Price Index for All Urban Consumers (CPI-U), advanced 0.5 percent for the two months ending in February 2019, the U.S. Bureau of Labor Statistics reported today. (See [table A](#).) Assistant Commissioner for Regional Operations Richard Holden noted that the February increase was influenced by higher prices for apparel and shelter. (Data in this report are not seasonally adjusted. Accordingly, month-to-month changes may reflect seasonal influences.)

Over the last 12 months, the CPI-U increased 3.5 percent. (See [chart 1](#) and [table A](#).) Energy prices advanced 0.7 percent, largely the result of an increase in the price of gasoline. The index for all items less food and energy advanced 3.6 percent over the year. (See [table 1](#).)

Chart 1. Over-the-year percent change in CPI-U, San Francisco-Oakland-Hayward, CA, February 2016–February 2019



Source: U.S. Bureau of Labor Statistics.

Food

Food prices increased 1.1 percent for the two months ending in February. (See [table 1](#).) Prices for food away from home rose 1.4 percent, and prices for food at home increased 0.7 percent for the same period.

Over the year, food prices advanced 3.9 percent. Prices for food away from home rose 6.7 percent since a year ago, and prices for food at home advanced 0.8 percent.

Energy

The energy index decreased 3.0 percent for the two months ending in February. The decrease was mainly due to lower prices for gasoline (-5.1 percent). Prices for electricity declined 1.2 percent, but prices for natural gas service advanced 7.0 percent for the same period.

Energy prices advanced 0.7 percent over the year, largely due to higher prices for gasoline (0.9 percent). Prices paid for electricity rose 0.6 percent, but prices for natural gas service decreased 1.2 percent during the past year.

All items less food and energy

The index for all items less food and energy advanced 0.6 percent in the latest two-month period. Higher prices for apparel (6.4 percent), recreation (1.9 percent), and shelter (0.4 percent) were partially offset by a price decline for medical care (-3.8 percent).

Over the year, the index for all items less food and energy advanced 3.6 percent. Components contributing to the increase included education and communication (6.5 percent) and shelter (3.5 percent). Partly offsetting the increases was a price decline in new and used motor vehicles (-0.9 percent).

Table A. San Francisco-Oakland-Hayward, CA, CPI-U 2-month and 12-month percent changes, all items index, not seasonally adjusted

Month	2015		2016		2017		2018		2019	
	2-month	12-month	2-month	12-month	2-month	12-month	2-month	12-month	2-month	12-month
February	1.0	2.5	0.9	3.0	0.8	3.4	1.4	3.6	0.5	3.5
April	1.1	2.4	0.7	2.7	1.1	3.8	0.8	3.2		
June	0.6	2.3	0.6	2.7	0.3	3.5	0.9	3.9		
August	0.3	2.6	0.7	3.1	0.2	3.0	0.6	4.3		
October	0.4	2.6	0.9	3.6	0.6	2.7	0.7	4.4		
December	-0.3	3.2	-0.3	3.5	-0.1	2.9	0.1	4.5		

The April 2019 Consumer Price Index for the San Francisco-Oakland-Hayward area is scheduled to be released on May 10, 2019.

Consumer Price Index Geographic Revision for 2018

In January 2018, BLS introduced a new geographic area sample for the Consumer Price Index (CPI). As part of the new sample, the index for this area was renamed. Additional information on the geographic revision is available at: www.bls.gov/cpi/additional-resources/geographic-revision-2018.htm.

Technical Note

The Consumer Price Index (CPI) is a measure of the average change in prices over time in a fixed market basket of goods and services. The Bureau of Labor Statistics publishes CPIs for two population groups: (1) a CPI for All Urban Consumers (CPI-U) which covers approximately 94 percent of the total population and (2) a CPI for Urban Wage Earners and Clerical Workers (CPI-W) which covers 28 percent of the total population. The CPI-U includes, in addition to wage earners and clerical workers, groups such as professional, managerial, and technical workers, the self-employed, short-term workers, the unemployed, and retirees and others not in the labor force.

The CPI is based on prices of food, clothing, shelter, and fuels, transportation fares, charges for doctors' and dentists' services, drugs, and the other goods and services that people buy for day-to-day living. Each month, prices are collected in 75 urban areas across the country from about 5,000 housing units and approximately 22,000 retail establishments--department stores, supermarkets, hospitals, filling stations, and other types of stores and service establishments. All taxes directly associated with the purchase and use of items are included in the index.

The index measures price changes from a designated reference date (1982-84) that equals 100.0. An increase of 16.5 percent, for example, is shown as 116.5. This change can also be expressed in dollars as follows: the price of a base period "market basket" of goods and services in the CPI has risen from \$10 in 1982-84 to \$11.65. For further details see the CPI home page on the Internet at www.bls.gov/cpi and the BLS Handbook of Methods, Chapter 17, The Consumer Price Index, available on the Internet at www.bls.gov/opub/hom/homch17_a.htm.

In calculating the index, price changes for the various items in each location are averaged together with weights that represent their importance in the spending of the appropriate population group. Local data are then combined to obtain a U.S. city average. Because the sample size of a local area is smaller, the local area index is subject to substantially more sampling and other measurement error than the national index. In addition, local indexes are not adjusted for seasonal influences. As a result, local area indexes show greater volatility than the national index, although their long-term trends are quite similar. **NOTE: Area indexes do not measure differences in the level of prices between cities; they only measure the average change in prices for each area since the base period.**

The San Francisco-Oakland-Hayward, CA. metropolitan area covered in this release is comprised of Alameda, Contra Costa, Marin, San Francisco, San Mateo Counties in the State of California.

Information in this release will be made available to sensory impaired individuals upon request. Voice phone: (202) 691-5200; Federal Relay Service: (800) 877-8339.

Table 1. Consumer Price Index for All Urban Consumers (CPI-U): Indexes and percent changes for selected periods San Francisco-Oakland-Hayward, CA (1982-84=100 unless otherwise noted)

Item and Group	Indexes			Percent change from-		
	Dec. 2018	Jan. 2019	Feb. 2019	Feb. 2018	Dec. 2018	Jan. 2019
Expenditure category						
All items.....	289.896	-	291.227	3.5	0.5	-
All items (1967=100)	891.220	-	895.314	-	-	-
Food and beverages	284.738	-	287.162	4.9	0.9	-
Food	280.928	-	283.969	3.9	1.1	-
Food at home	252.572	253.745	254.276	0.8	0.7	0.2
Cereals and bakery products	259.573	-	252.076	-2.0	-2.9	-
Meats, poultry, fish, and eggs.....	252.699	-	246.686	-0.6	-2.4	-
Dairy and related products	268.208	-	269.671	1.1	0.5	-
Fruits and vegetables.....	333.244	-	345.352	3.8	3.6	-
Nonalcoholic beverages and beverage materials(1)	204.276	-	209.346	1.6	2.5	-
Other food at home	217.463	-	222.216	0.7	2.2	-
Food away from home.....	314.197	-	318.676	6.7	1.4	-
Food away from home.....	314.197	-	318.676	6.7	1.4	-
Alcoholic beverages	325.126	-	322.434	12.4	-0.8	-
Housing	341.516	-	342.944	3.4	0.4	-
Shelter	391.230	391.167	392.626	3.5	0.4	0.4
Rent of primary residence(2).....	448.211	449.498	450.694	4.6	0.6	0.3
Owners' equiv. rent of residences(2)(3).....	419.577	420.800	421.095	3.0	0.4	0.1
Owners' equiv. rent of primary residence(1)(2)	419.577	420.800	421.095	3.0	0.4	0.1
Fuels and utilities.....	390.207	-	397.908	2.2	2.0	-
Household energy	337.844	338.497	340.206	0.2	0.7	0.5
Energy services(2)	338.773	339.597	341.065	0.2	0.7	0.4
Electricity(2).....	369.436	364.867	364.867	0.6	-1.2	0.0
Utility (piped) gas service(2).....	259.550	272.912	277.765	-1.2	7.0	1.8
Household furnishings and operations.....	138.759	-	138.669	2.6	-0.1	-
Apparel	110.047	-	117.077	3.0	6.4	-
Transportation	201.838	-	202.749	1.2	0.5	-
Private transportation	197.635	-	196.577	1.9	-0.5	-
New and used motor vehicles(4).....	95.300	-	95.322	-0.9	0.0	-
New vehicles(1).....	161.607	-	164.164	2.4	1.6	-
Used cars and trucks(1)	250.679	-	252.079	0.5	0.6	-
Motor fuel	264.929	255.355	251.375	1.0	-5.1	-1.6
Gasoline (all types).....	263.834	254.283	250.294	0.9	-5.1	-1.6
Gasoline, unleaded regular(4).....	263.942	254.311	250.511	0.9	-5.1	-1.5
Gasoline, unleaded midgrade(4) (5)	247.683	239.265	232.890	0.7	-6.0	-2.7
Gasoline, unleaded premium(4)....	249.821	241.076	236.797	0.9	-5.2	-1.8
Motor vehicle insurance(1).....	516.426	-	516.426	3.8	0.0	-
Medical care	539.595	-	519.339	3.8	-3.8	-
Recreation(6).....	115.799	-	117.960	1.8	1.9	-
Education and communication(6).....	151.296	-	152.196	6.5	0.6	-
Tuition, other school fees, and child care(1)	1,833.234	-	1,833.255	11.1	0.0	-
Other goods and services	495.570	-	500.106	5.7	0.9	-
Commodity and service group						
All items.....	289.896	-	291.227	3.5	0.5	-
Commodities	191.661	-	193.224	3.2	0.8	-
Commodities less food & beverages.....	141.767	-	142.875	1.7	0.8	-
Nondurables less food & beverages	187.026	-	188.183	1.2	0.6	-
Durables	98.166	-	99.201	2.7	1.1	-

Note: See footnotes at end of table.

Table 1. Consumer Price Index for All Urban Consumers (CPI-U): Indexes and percent changes for selected periods San Francisco-Oakland-Hayward, CA (1982-84=100 unless otherwise noted) - Continued

Item and Group	Indexes			Percent change from-		
	Dec. 2018	Jan. 2019	Feb. 2019	Feb. 2018	Dec. 2018	Jan. 2019
Services.....	371.674	-	372.829	3.6	0.3	-
Special aggregate indexes						
All items less medical care	279.731	-	281.912	3.5	0.8	-
All items less shelter.....	247.939	-	249.269	3.5	0.5	-
Commodities less food	149.605	-	150.524	2.7	0.6	-
Nondurables	237.175	-	238.975	3.4	0.8	-
Nondurables less food.....	197.930	-	198.709	2.7	0.4	-
Services less rent of shelter(3).....	363.173	-	364.031	3.8	0.2	-
Services less medical care services.....	360.883	-	363.563	3.5	0.7	-
Energy	297.690	291.061	288.767	0.7	-3.0	-0.8
All items less energy	293.036	-	294.874	3.7	0.6	-
All items less food and energy	295.751	-	297.400	3.6	0.6	-

Footnotes

(1) Indexes on a December 1977=100 base.

(2) This index series was calculated using a Laspeyres estimator. All other item stratum index series were calculated using a geometric means estimator.

(3) Indexes on a December 1982=100 base.

(4) Special index based on a substantially smaller sample.

(5) Indexes on a December 1993=100 base.

(6) Indexes on a December 1997=100 base.

- Data not available

NOTE: Index applies to a month as a whole, not to any specific date.