

Proposed Flood and Sea Level Rise Resiliency Agency



Burlingame Council Meeting

April 1, 2019



SOURCE: Bay Meadows, San Mateo, 2018

Agenda

- Why is Agency Needed
- Key Aspects of Proposal
- Start-Up Schedule
- Funding Breakdown
- Endorsements
- Action Requested

esassoc.com



Why Is Agency Needed?

- Sea Level Rise Property Impacts will be Significant
- Needed Flood, Sea Level Rise and Regional Stormwater Quality Projects are Expensive and Often Multi-Jurisdictional
- San Mateo County at Disadvantage When Pursuing Grants
- Existing Flood Control District has Limited Scope
- Agency may Permit Sharing of Benefits for Regional Stormwater Projects Mandated by RWQCB
- Agency Could Provide Maintenance of Regional Facilities

esassoc.com

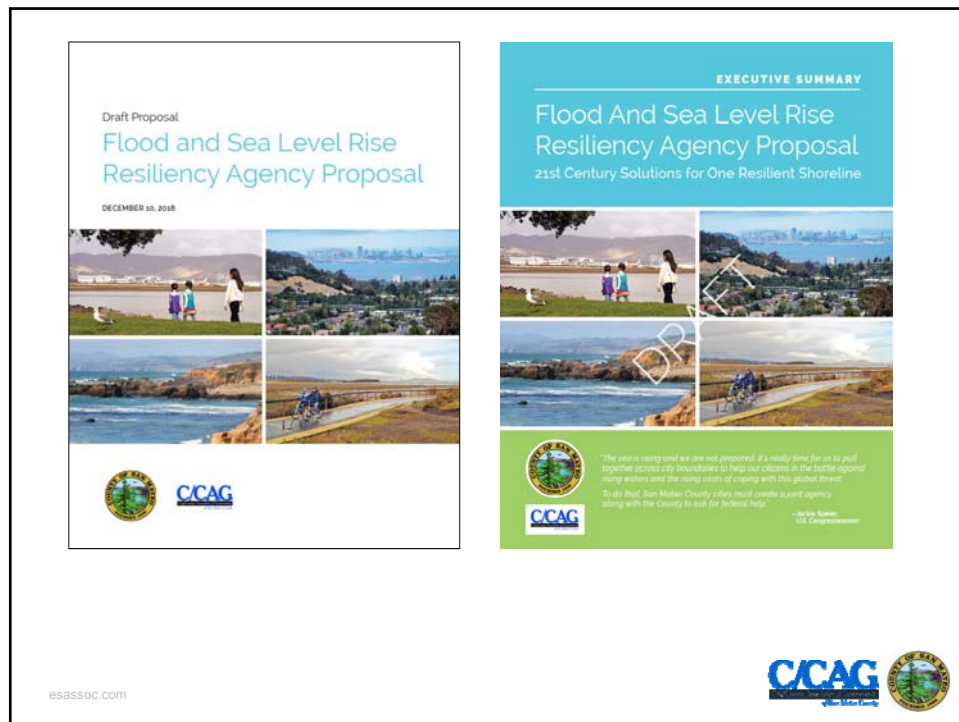


Process

- C/CAG Formed Standing Countywide Water Coordination Committee
- Committee Formed Staff Advisory Team (SAT)
- SAT Worked with Consultant to Develop a Proposal for a Flood and Sea Level Rise Resiliency Agency (FSLRRA)
- Multiple Outreach Meetings were Held with Agency Staff and Elected Officials
- C/CAG Board and Board of Supervisors Endorsed Proposal

esassoc.com





The Proposal

- Modify Existing County Flood Control District (legislation)
 - Modify governance (7 Member Board)
 - Provide needed functions
- 3-Year Start-up
- Share Start-up Costs
 - 50% County
 - 50% Cities

esassoc.com



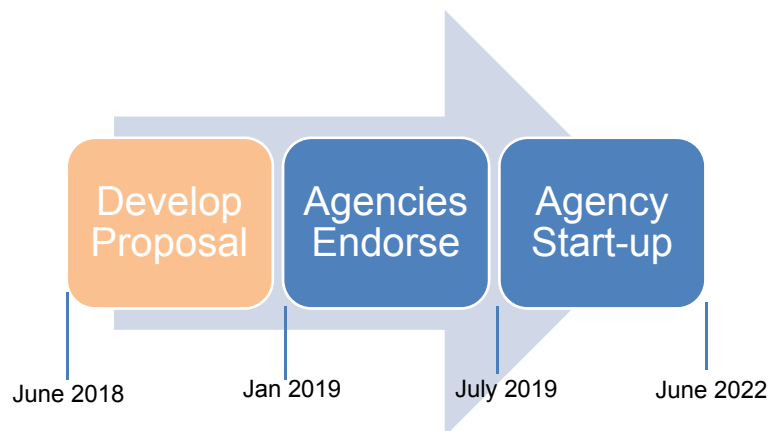
The Proposal (cont.)

- Prepare Flood and Sea Level Rise Investment Plan
- Conduct Public Engagement Program
- Identify and Pursue Reliable On-going Funding
- No Disruption of MOU Projects During Start-up
 - Continued County Funding and Staffing
 - City Participation per MOU
- No Disruption to FCD Projects During Start-up
 - Contract with County DPW to Maintain Existing Staffing

esassoc.com



Phasing: Endorsement and Start Up



esassoc.com



Funding Breakdown

Services	Annual Budget	Funding Source
Agency Start-up	\$1.1M	County - \$350K Cities - \$750k
MOU Services	\$400k Staff Resources	County Participating Cities
Flood Control District	\$3.8M – Subzone Funding \$1.5M – C/CAG	Existing Property Tax Existing Fee

esassoc.com



Funding Breakdown

- Start-up Funding (by population)

Population	Annual Cost	# Cities
< 20,000	25,000	7
20,001 – 60,000	40,000	9
60,001 +	55,000	4

esassoc.com



Endorsements

- C/CAG Board & Board of Supervisors – January
- Cities Endorsing to date:
 - Belmont
 - South San Francisco
 - East Palo Alto
 - Half Moon Bay
 - Brisbane
 - Colma
 - San Bruno
 - San Carlos
 - Pacifica
 - Millbrae
- Cities with Action Pending
 - Atherton, Menlo Park, Portola Valley, Daly City – Info Items, Action in April
 - Foster City – Information Item 2/6; Tabled for further discussion
 - Woodside did not approve resolution, may reconsider at April meeting
- Other City/Town Meetings through April 17

esassoc.com



Requested Action

- Endorse FSLRRA Proposal
- Approve 3-year Annual Funding

esassoc.com



Proposed Flood and Sea Level Rise Resiliency Agency



Burlingame Council Meeting

April 1, 2019



SOURCE: Bay Meadows, San Mateo, 2018