

PLANT LIST		
BOTANICAL NAME	COMMON NAME	WATER USE
1. PRUNUS PANDOLFI	YAMON	LOW
2. LANTANA	YAMON	LOW
3. LANTANA	YAMON	LOW
4. LANTANA	YAMON	LOW
5. LANTANA	YAMON	LOW
6. LANTANA	YAMON	LOW
7. LANTANA	YAMON	LOW
8. LANTANA	YAMON	LOW
9. LANTANA	YAMON	LOW
10. LANTANA	YAMON	LOW
11. LANTANA	YAMON	LOW
12. LANTANA	YAMON	LOW
13. LANTANA	YAMON	LOW
14. LANTANA	YAMON	LOW
15. LANTANA	YAMON	LOW
16. LANTANA	YAMON	LOW
17. LANTANA	YAMON	LOW
18. LANTANA	YAMON	LOW
19. LANTANA	YAMON	LOW
20. LANTANA	YAMON	LOW
21. LANTANA	YAMON	LOW
22. LANTANA	YAMON	LOW
23. LANTANA	YAMON	LOW
24. LANTANA	YAMON	LOW
25. LANTANA	YAMON	LOW
26. LANTANA	YAMON	LOW
27. LANTANA	YAMON	LOW
28. LANTANA	YAMON	LOW
29. LANTANA	YAMON	LOW
30. LANTANA	YAMON	LOW
31. LANTANA	YAMON	LOW
32. LANTANA	YAMON	LOW
33. LANTANA	YAMON	LOW
34. LANTANA	YAMON	LOW
35. LANTANA	YAMON	LOW
36. LANTANA	YAMON	LOW
37. LANTANA	YAMON	LOW
38. LANTANA	YAMON	LOW
39. LANTANA	YAMON	LOW
40. LANTANA	YAMON	LOW
41. LANTANA	YAMON	LOW
42. LANTANA	YAMON	LOW
43. LANTANA	YAMON	LOW
44. LANTANA	YAMON	LOW
45. LANTANA	YAMON	LOW
46. LANTANA	YAMON	LOW
47. LANTANA	YAMON	LOW
48. LANTANA	YAMON	LOW
49. LANTANA	YAMON	LOW
50. LANTANA	YAMON	LOW
51. LANTANA	YAMON	LOW
52. LANTANA	YAMON	LOW
53. LANTANA	YAMON	LOW
54. LANTANA	YAMON	LOW
55. LANTANA	YAMON	LOW
56. LANTANA	YAMON	LOW
57. LANTANA	YAMON	LOW
58. LANTANA	YAMON	LOW
59. LANTANA	YAMON	LOW
60. LANTANA	YAMON	LOW
61. LANTANA	YAMON	LOW
62. LANTANA	YAMON	LOW
63. LANTANA	YAMON	LOW
64. LANTANA	YAMON	LOW
65. LANTANA	YAMON	LOW
66. LANTANA	YAMON	LOW
67. LANTANA	YAMON	LOW
68. LANTANA	YAMON	LOW
69. LANTANA	YAMON	LOW
70. LANTANA	YAMON	LOW
71. LANTANA	YAMON	LOW
72. LANTANA	YAMON	LOW
73. LANTANA	YAMON	LOW
74. LANTANA	YAMON	LOW
75. LANTANA	YAMON	LOW
76. LANTANA	YAMON	LOW
77. LANTANA	YAMON	LOW
78. LANTANA	YAMON	LOW
79. LANTANA	YAMON	LOW
80. LANTANA	YAMON	LOW
81. LANTANA	YAMON	LOW
82. LANTANA	YAMON	LOW
83. LANTANA	YAMON	LOW
84. LANTANA	YAMON	LOW
85. LANTANA	YAMON	LOW
86. LANTANA	YAMON	LOW
87. LANTANA	YAMON	LOW
88. LANTANA	YAMON	LOW
89. LANTANA	YAMON	LOW
90. LANTANA	YAMON	LOW
91. LANTANA	YAMON	LOW
92. LANTANA	YAMON	LOW
93. LANTANA	YAMON	LOW
94. LANTANA	YAMON	LOW
95. LANTANA	YAMON	LOW
96. LANTANA	YAMON	LOW
97. LANTANA	YAMON	LOW
98. LANTANA	YAMON	LOW
99. LANTANA	YAMON	LOW
100. LANTANA	YAMON	LOW

PREVIOUSLY

1 PROPOSED LANDSCAPE PLAN  
SCALE 1/8" = 1'-0"



CORNELIA HABER  
RESIDENTIAL DESIGN  
PHONE 650 787 1197  
corneliahaber@gmail.com

DACA BUILDERS INC.  
2386 MAYWOOD AVE.,  
SAN JOSE, CA 95128  
PHONE 408 838 0450

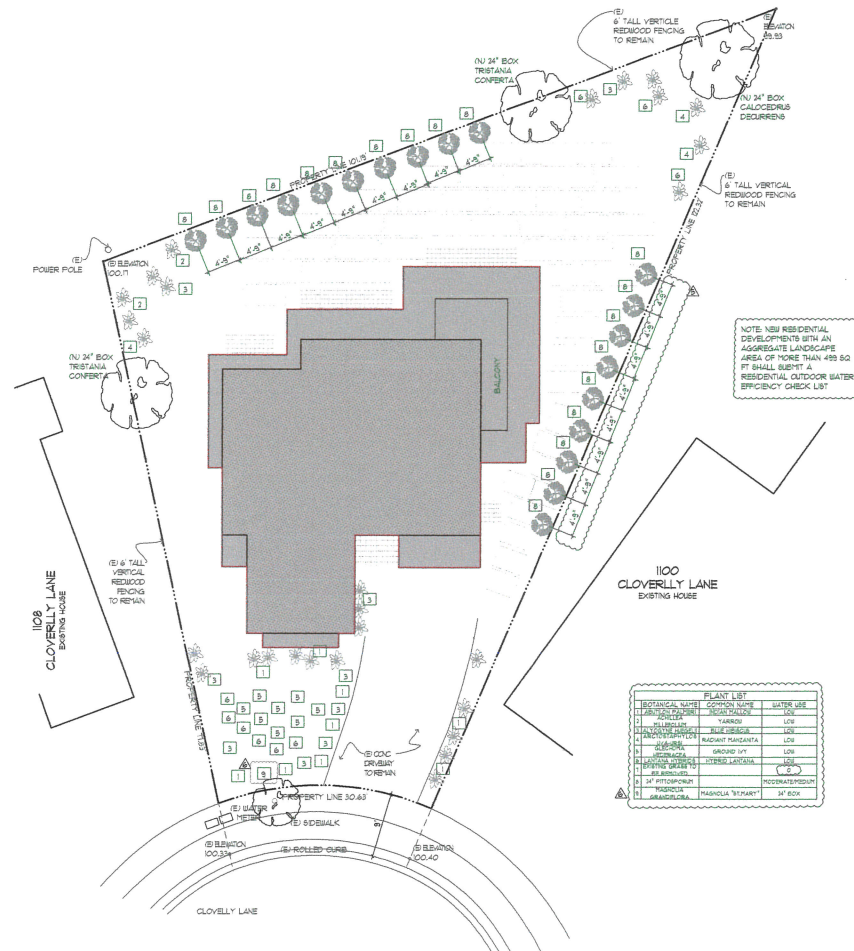
CHEUNG RESIDENCE  
1104 CLOVELLY LANE BURLINGAME, CA 94010

DATE AUGUST 14, 2018  
REVISIONS


A1.2

# EROSION CONTROL MEASURES FOR CONSTRUCTION

1. CONTRACTOR SHALL BE RESPONSIBLE FOR THE DISPOSAL OF ANY EXCESS MATERIALS FROM THE WORK SITE.
2. STORAGE OF CONSTRUCTION MATERIALS AND EQUIPMENT WILL NOT BE ALLOWED IN OR UPON THE PUBLIC RIGHT-OF-WAY. ALL MATERIAL INTENDED FOR THE USE ON ANY PROJECT SHALL BE OFF-LOADED DIRECTLY FROM DELIVERY VEHICLES AND PLACED AS REQUIRED DURING THE COURSE OF CONSTRUCTION.
3. CONTRACTOR SHALL COMPLY WITH THE RULES AND REGULATIONS OF THE STATE CONSTRUCTION SAFETY ORDERS.
4. ROOF RAINOFF SHALL BE DIRECTED ONTO VEGETATED AREAS.
5. EXISTING VEGETATION AREAS SHALL BE RETAINED AS POSSIBLE.
6. ATTACHED TO THE PLANS: SAN MATEO COUNTYWIDE WATER POLLUTION PREVENTION PROGRAM'S CONSTRUCTION BMP. CONTRACTOR REQUIRED TO IMPLEMENT APPLICABLE BMP'S.
7. STORE, HANDLE, AND DISPOSE OF CONSTRUCTION MATERIALS/WASTES PROPERLY TO PREVENT CONTACT WITH STORMWATER.
8. CONTRACTOR SHALL TRAIN AND PROVIDE INSTRUCTION TO ALL EMPLOYEES/SUBCONTRACTORS RE CONSTRUCTION BMP'S.



1 PROPOSED LANDSCAPE PLAN  
SCALE 1/8" = 1'-0"



CORNELIA HABER  
RESIDENTIAL DESIGN  
PHONE 650 767 1197  
cornelia.haber@gmail.com

DACA BUILDERS INC.  
2386 MAYWOOD AVE.,  
SAN JOSE, CA 95128  
PHONE 408 838 0450

CHEUNG RESIDENCE  
1104 CLOVELLY LANE BURLINGAME, CA 94010

DATE AUGUST 14, 2018

REVISIONS

JANUARY 16, 2018

FEBRUARY 26, 2018

A1.2