

# ON-STREET PARKING DISCUSSION ALONG THE 1200 BLOCK OF CALIFORNIA DRIVE

Traffic Safety and Parking Commission  
February 13, 2020



# Presentation Overview

---

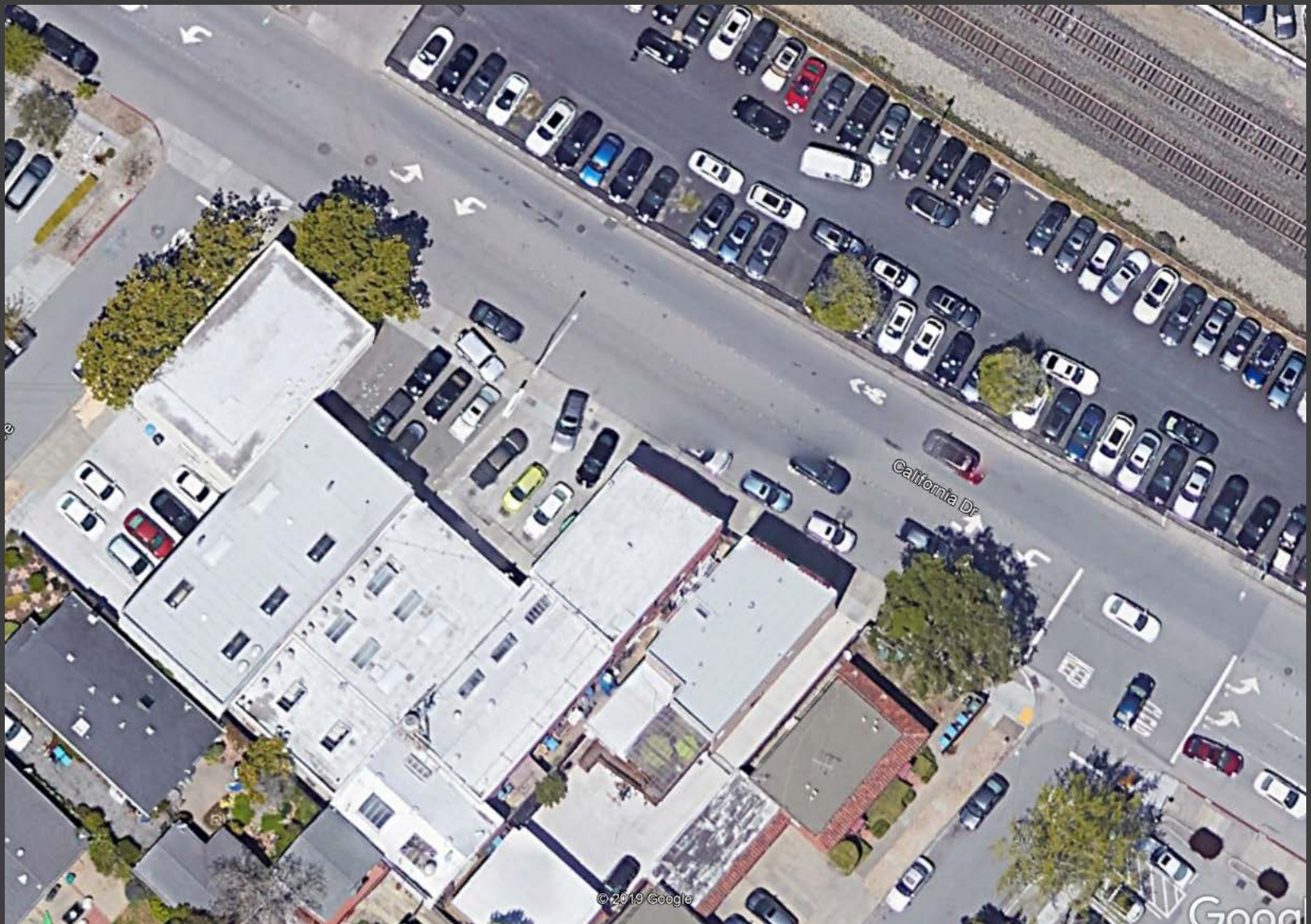
- Background
- Discussion
- Obtain Feedback
- Determine Next Steps

# Discussion

---

- **Issues:**
  - Queuing on southbound California Drive
  - Drivers stopping on Class II bike lane
  - Drivers crossing centerline to southbound left-turn lanes
  - Drivers not utilizing inside left-turn lane
  
- **Contributing factors:**
  - Burlingame's sole interchange with US 101
  - At-Grade Caltrain crossing at Broadway (over 90 daily trains)
  - Loss of parking from Lot T
  - Availability of short-term parking in the immediate area
  - Loss of two-way left-turn lane
  - Single controller for two intersections
  - Close proximity of California and Carolan intersections

# Discussion





# Discussion

---



# Discussion

---



# Discussion



# Discussion

---

- **Options for discussion:**

- Remove on-street parking on this block
- Modify the current on-street parking restriction period
- No changes

- **Other factors:**

- Signal timing adjustments
- Caltrain electrification project will increase frequency of trains
- Broadway Grade Separation



# Presentation Summary

---

- Background
- Discussion
- Obtain Feedback
- Determine Next Steps

# Questions & Feedback

---

