

# Western Information Office

Search Western Region

Go

Western Home

Western Geography ▾

Western Subjects ▾

Western Archives ▾

Contact Western

## News Release Information

26-492-SAN  
Wednesday, March 11, 2026

## Contacts

### Technical information:

(415) 625-2270  
[BLInfoSF@bls.gov](mailto:BLInfoSF@bls.gov)  
[www.bls.gov/regions/west](http://www.bls.gov/regions/west)

### Media contact:

(415) 625-2270

## Related Links

[CPI historical databases](#)

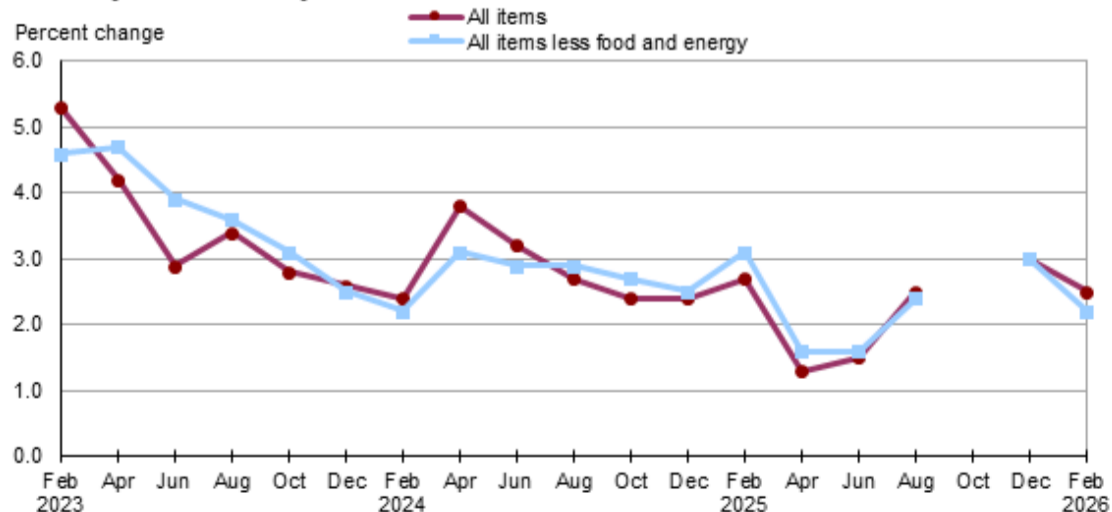
## Consumer Price Index, San Francisco Area — February 2026

**Area prices were up 1.3 percent over the past two months, up 2.5 percent from a year ago**

The Consumer Price Index for All Urban Consumers (CPI-U) for San Francisco-Oakland-Hayward advanced 1.3 percent for the two months ending in February 2026, the U.S. Bureau of Labor Statistics (BLS) reported today. Regional Commissioner Chris Rosenlund noted that the index for all items less food and energy increased 1.1 percent. The food index increased 1.5 percent, and the energy index increased 5.0 percent. (Data in this report are not seasonally adjusted. Accordingly, bi-monthly changes may reflect seasonal influences.)

The San Francisco area all items CPI-U increased 2.5 percent for the 12 months ending in February. The index for all items less food and energy rose 2.2 percent over the year. Food prices rose 4.8 percent. Energy prices increased 1.3 percent.

**Chart 1. Over-the-year percent change in CPI-U, San Francisco-Oakland-Hayward, CA, February 2023–February 2026**



Note: The October 2025 data values are not available due to the 2025 lapse in appropriations.  
Source: U.S. Bureau of Labor Statistics.

[View Chart Data](#)

## Food

Food prices advanced 1.5 percent for the two months ending in February. Prices for food at home (grocery store purchases) increased 1.9 percent, with higher prices in all 6 major grocery store food groups. Prices for food away from home (restaurant, cafeteria, and vending purchases) rose 1.1 percent for the same period.

Food prices rose 4.8 percent over the year. Prices for food at home advanced 5.8 percent, and prices for food away from home rose 3.8 percent.

## Energy

The energy index rose 5.0 percent for the two months ending in February. Gasoline prices rose 7.1 percent.

Energy prices increased 1.3 percent over the year. Gasoline prices decreased 4.3 percent.

### All items less food and energy

The index for all items less food and energy rose 1.1 percent during the two-month period. Among the index's components, prices were higher for apparel (+12.0 percent) and shelter (+1.1 percent). In contrast, prices were lower for used cars and trucks (-4.3 percent) and education and communication (-0.3 percent).

The index for all items less food and energy rose 2.2 percent over the year. Components contributing to the increase included household furnishings and operations (+3.5 percent) and shelter (+2.3 percent). In contrast, prices were lower for used cars and trucks (-3.9 percent).

**Table A. San Francisco-Oakland-Hayward, CA, CPI-U 2-month and 12-month percent changes, all items index, not seasonally adjusted**

Month	2022		2023		2024		2025		2026	
	2-month	12-month	2-month	12-month	2-month	12-month	2-month	12-month	2-month	12-month
February	1.4	5.2	1.8	5.3	1.5	2.4	1.8	2.7	1.3	2.5
April	1.5	5.0	0.4	4.2	1.8	3.8	0.4	1.3		
June	1.7	6.8	0.5	2.9	-0.1	3.2	0.2	1.5		
August	-0.5	5.7	0.0	3.4	-0.5	2.7	0.4	2.5		
October	1.0	6.0	0.3	2.8	0.0	2.4	-	-		
December	-0.3	4.9	-0.4	2.6	-0.4	2.4	-	3.0		

Note: The October 2025 data values are not available due to the 2025 lapse in appropriations

The April 2026 Consumer Price Index for the San Francisco area is scheduled to be released on May 12, 2026.

### Technical Note

The [Consumer Price Index](#) (CPI) is a measure of the average change in prices over time in a fixed market basket of goods and services. The Consumer Price Index for San Francisco is published bi-monthly. The set of components and sub-aggregates published for regional and metropolitan indexes is more limited than at the U.S. city average level; these indexes are byproducts of the national CPI program. Each local index has a much smaller sample size than the national or regional indexes and is, therefore, subject to substantially more sampling and other measurement error. As a result, local-area indexes are more volatile than the national or regional indexes. In addition, local indexes are not adjusted for seasonal influences. **NOTE: Area indexes do not measure differences in the level of prices between cities; they only measure the average change in prices for each area since the base period.**

A full all-items data series history for the original index value and for 1-month, 2-month, 3-month, 6-month, and 12-month percent changes can be accessed via BLS data query tools. A direct link to the all-items series is provided in Table 1 of this release under historical data.

The San Francisco-Oakland-Hayward, CA. metropolitan area covered in this release is comprised of Alameda, Contra Costa, Marin, San Francisco, San Mateo Counties in the State of California.

Refer to the national [CPI news release technical note](#) or the [Handbook of Methods](#) for more information.

If you are deaf, hard of hearing, or have a speech disability, please dial 7-1-1 to access telecommunications relay services.

**Table 1. San Francisco-Oakland-Hayward, CA, CPI-U by expenditure category for February 2026, not seasonally adjusted (1982-84=100 unless otherwise noted)**

Expenditure category	Indexes				Percent change from -		
	Historical data	Dec. 2025	Jan. 2026	Feb. 2026	Feb. 2025	Dec. 2025	Jan. 2026
All Items		358.568	-	363.211	2.5	1.3	-
All items (1967=100)		1,102.336	-	1,116.612			
Food and beverages		387.302	-	393.314	4.8	1.6	-
Food		390.239	-	396.173	4.8	1.5	-
Food at home		348.464	351.327	355.141	5.8	1.9	1.1
Cereals and bakery products		341.405	344.120	345.751	3.8	1.3	0.5
Meats, poultry, fish, and eggs		348.208	360.494	358.194	-4.8	2.9	-0.6
Dairy and related products		332.475	334.047	332.754	-0.1	0.1	-0.4
Fruits and vegetables		431.707	438.949	433.502	-1.0	0.4	-1.2
Nonalcoholic beverages and beverage materials <sup>(1)</sup>		233.625	246.778	246.941	-0.6	5.7	0.1
Other food at home		345.463	335.609	351.167	22.5	1.7	4.6
Food away from home		444.093	-	448.850	3.8	1.1	-
Alcoholic beverages		352.815	-	359.688	3.9	1.9	-

**Footnotes**  
(1) Index is on a December 1977=100 base.  
(2) Index is on a December 1982=100 base.  
(3) Indexes on a December 1997=100 base.  
(4) Special index based on a substantially smaller sample.  
(5) Indexes on a December 1993=100 base.

- Data not available.  
NOTE: Index applies to a month as a whole, not to any specific date. Data not seasonally adjusted.

Expenditure category	Indexes				Percent change from -		
	Historical data	Dec. 2025	Jan. 2026	Feb. 2026	Feb. 2025	Dec. 2025	Jan. 2026
Housing		414.107	-	419.057	2.7	1.2	-
Shelter		458.100	458.201	462.932	2.3	1.1	1.0
Rent of primary residence		524.777	526.399	527.201	1.9	0.5	0.2
Owners' equiv. rent of residences(2)		495.633	495.691	499.373	2.4	0.8	0.7
Owners' equiv. rent of primary residence(2)		495.633	495.691	499.373	2.4	0.8	0.7
Household furnishings and operations		182.004	-	184.713	3.5	1.5	-
Apparel		121.374	-	135.945	4.2	12.0	-
Transportation		265.573	-	271.286	0.8	2.2	-
Private transportation		262.821	-	265.276	-1.9	0.9	-
New and used motor vehicles(3)		119.066	-	117.273	-2.0	-1.5	-
New vehicles(1)		192.164	-	193.434	0.4	0.7	-
Used cars and trucks(1)		331.608	-	317.192	-3.9	-4.3	-
Motor fuel		313.472	307.939	335.457	-4.0	7.0	8.9
Gasoline (all types)		310.712	305.224	332.858	-4.3	7.1	9.1
Unleaded regular(4)		309.351	303.844	331.820	-4.5	7.3	9.2
Unleaded midgrade(4)(5)		291.889	286.546	311.679	-4.3	6.8	8.8
Unleaded premium(4)		299.406	294.288	319.337	-3.8	6.7	8.5
Medical Care		608.020	-	608.192	1.9	0.0	-
Recreation(3)		155.962	-	155.403	2.5	-0.4	-
Education and communication(3)		168.375	-	167.838	0.5	-0.3	-
Tuition, other school fees, and child care(1)		2,120.215	-	2,125.439	4.5	0.2	-
Other goods and services		653.067	-	646.564	2.4	-1.0	-

**Footnotes**  
(1) Index is on a December 1977=100 base.  
(2) Index is on a December 1982=100 base.  
(3) Indexes on a December 1997=100 base.  
(4) Special index based on a substantially smaller sample.  
(5) Indexes on a December 1993=100 base.

- Data not available.  
NOTE: Index applies to a month as a whole, not to any specific date. Data not seasonally adjusted.

**Table 2. San Francisco-Oakland-Hayward, CA, CPI-U by special aggregate index for February 2026, not seasonally adjusted (1982-84=100 unless otherwise noted)**

Special aggregate index	Indexes				Percent change from -		
	Historical data	Dec. 2025	Jan. 2026	Feb. 2026	Feb. 2025	Dec. 2025	Jan. 2026
All items		358.568	-	363.211	2.5	1.3	-
Food		390.239	-	396.173	4.8	1.5	-
Energy		428.035	431.157	449.344	1.3	5.0	4.2
All items less food and energy		355.664	-	359.478	2.2	1.1	-
All items less energy		359.459	-	363.546	2.5	1.1	-
All items less medical care		348.212	-	353.029	2.5	1.4	-
All items less shelter		320.125	-	324.766	2.6	1.4	-
Commodities		237.857	-	242.750	2.0	2.1	-
Commodities less food		171.061	-	175.299	0.1	2.5	-
Commodities less food & beverages		163.208	-	167.309	0.0	2.5	-
Durables		115.145	-	114.820	0.0	-0.3	-
Nondurables		301.519	-	310.361	2.8	2.9	-
Nondurables less food & beverages		213.063	-	224.806	-0.2	5.5	-
Nondurables less food		223.471	-	234.817	-0.1	5.1	-
Services		460.528	-	464.872	2.7	0.9	-
Services less rent of shelter(1)		492.789	-	496.676	3.2	0.8	-
Services less medical care services		449.325	-	453.693	2.6	1.0	-

**Footnotes**  
(1) Indexes on a December 1982=100 base.

- Data not available.  
NOTE: Index applies to a month as a whole, not to any specific date.

**Last Modified Date:** Wednesday, March 11, 2026

U.S. BUREAU OF LABOR STATISTICS Western Information Office Attn: EA & I, 90 Seventh Street Suite 14-100 San Francisco, CA 94103-6715

Telephone: 415-625-2270\_ [www.bls.gov/regions/west](http://www.bls.gov/regions/west) [Contact Western Region](#)