



National Auto Fleet Group

A Division of Chevrolet of Watsonville

490 Auto Center Drive, Watsonville, CA 95076

(855) 289-6572 • (831) 480-8497 Fax

Fleet@NationalAutoFleetGroup.com

2/18/2026
4/29/2026 Re-Configured

Government Quote ID: **42433 R2**

Order Cut Off Date: **7/24/2026**

Johnson Woo
City of Burlingame
Public Works Department

1361 N. Carolan Ave
Burlingame, California, 94010

Dear Johnson Woo,

National Auto Fleet Group is pleased to quote the following vehicle(s) for your consideration.

One (1) New/Unused (2026 Chevrolet Silverado EV (CT35843) e4WD Crew Cab Standard Range Work Truck, Western Truck Fab Installed; MAXON C2-60-1342 TP38 LIFT GATE: + pkg, per est 86846) and delivered to your specified location, each for

	One Unit (MSRP)	One Unit	Total % Savings	Total Savings
Contract Price	\$57,450.00	\$55,680.70	3.080 %	\$1,769.30
Western Truck Fab Installed; MAXON C2-60-1342 TP38 LIFT GATE: + pkg, per est 86846		\$14,938.00		
Tax (9.6300 %)		\$6,800.58		
Tire fee		\$8.75		
Total		\$77,428.03		

*Per the attached specifications. Additional upfit options included; **Required progress payment for chassis due upon delivery to installer. Invoice for upfit due thereafter upon completion.**

This vehicle(s) is available under the **Sourcewell Contract 081325-NAF**. Please reference this Contract number on all purchase order to National Auto Fleet Group. Payment terms are Net 20 days after receipt of vehicle. Thank you in advance for your consideration. Should you have any questions, please do not hesitate to call.

Sincerely,

Jesse Cooper
Account Manager
Email: Fleet@NationalAutoFleetGroup.com
Office: (855) 289-6572
Fax: (831) 480-8497



GMC

Purchase Order Instructions & Resources

Once units are scheduled by OEM, no cancellations are accepted

In order to finalize your purchase please submit this purchase packet to your governing body for a purchase order approval and submit your purchase order in the following way:

Email: Fleet@NationalAutoFleetGroup.com

Fax: (831) 480-8497

Mail: National Auto Fleet Group

490 Auto Center Drive

Watsonville, CA 95076

We will send a courtesy confirmation for your order and a W-9 if needed.

Additional Resources

Learn how to track your vehicle: www.NAFGETA.com

Use the upfitter of your choice: www.NAFGpartner.com

Vehicle Status: ETA@NationalAutoFleetGroup.com

General Inquiries: Fleet@NationalAutoFleetGroup.com

For general questions or assistance please contact our main office at:

1-855-289-6572

Western Truck Fabrication, Inc
 1923 W Winton Ave
 Hayward, CA 94545-1205
 5107859994
 www.westerntruckfab.com



QUOTE

ADDRESS

NATIONAL AUTO FLEET
 GROUP
 490 AUTO CENTER DRIVE
 WATSONVILLE, CA 95076

SHIP TO

NATIONAL AUTO FLEET
 GROUP
 490 AUTO CENTER DRIVE
 WATSONVILLE, CA 95076

QUOTE # 86846

DATE 04/24/2026

WTF REP

SAMUEL MEYERS

DEALER SALES REP

DAN AGATEP

ACTIVITY	QTY	DESCRIPTION
Truck Details	1	YEAR/MAKE: 2026 CHEVROLET MODEL:EV SILVERADO e4WD WB: CA: CAB TYPE: CREW CAB FUEL: ELECTRIC
MATERIALS MISC	1	FURNISH AND INSTALL ONE (1) MAXON C2-60-1342 TP38 LIFT GATE: LIFT CAPACITY: 1300LBS LOAD AREA: 55"X38" + 4" BED HEIGHT RANGE: 28" TO 42" WEIGHT: 510LBS PAINTED BLACK
MATERIALS MISC	1	FURNISH AND INSTALL ONE (1) TORQUELIFT LIFT GATE INSTALL KIT FOR SILVERADO EV; WITH BED EXTENSION HITCH EXTENSION FOR TOWING 5000LBS **500LB TONGUE WEIGHT**
MATERIALS MISC	1	FURNISH AND INSTALL AUXILLIARY BATTERY SYSTEM TO POWER MAXON CS-60-1342 TP38 LIFTGATE INSTALL DC-DC CHARGER INSTALL CIRBUIT BREAKER FABRICATE AND INSTALL AUXILLIARY BATTERY CAGE PROTECTOR
MATERIALS MISC	1	FURNISH AND INSTALL ONE (1) RACK-IT LADDER RACK P/N: 1017.9S-EV
PICK-UP AND DELIVERY	1	DELIVER VEHICLE TO CITY OF BURLINGAME: 1361 N. CAROLAN AVE BURLINGAME, CA 94010

CONTACT: ANTHONY MARTIN

SPECIAL ORDERS ARE NON RETURNABLE AND NON REFUNDABLE.
 ALL RETURNED PARTS ARE SUBJECT TO A 25% RESTOCKING FEE.
 CREDIT CARD PAYMENTS OVER \$1,000 ARE SUBJECT TO A 3% PROCESSING FEE.

NOT RESPONSIBLE FOR LOST OR MISSING EQUIPMENT

ACTIVITY QTY DESCRIPTION

REFERENCE NATIONAL AUTO QUOTE 42433

PLEASE REVIEW AND READ QUOTE CAREFULLY.
THIS QUOTE IS GOOD FOR 30 DAYS FROM THE
DATE OF CREATION.
UPON ACCEPTANCE OF THIS QUOTE CIRCLE
OPTIONS DESIRED.
PLEASE SIGN AND EMAIL BACK TO SALESPERSON.
Accepted By: _____
Date: _____
PO#: _____
Chasis ETA: _____
VIN #: _____

SUBTOTAL 13,580.00
TAX 0.00
TOTAL **\$13,580.00**

Accepted By

Accepted Date

SPECIAL ORDERS ARE NON RETURNABLE AND NON REFUNDABLE.
ALL RETURNED PARTS ARE SUBJECT TO A 25% RESTOCKING FEE.
CREDIT CARD PAYMENTS OVER \$1,000 ARE SUBJECT TO A 3% PROCESSING FEE.

****NOT RESPONSIBLE FOR LOST OR MISSING EQUIPMENT****

Vehicle Configuration Options

EMISSIONS	
Code	Description
YF5	Emissions, California state requirements
ENGINE	
Code	Description
EN0	Engine, none, (STD)
TRANSMISSION	
Code	Description
MF1	Transmission, none, (STD)
PREFERRED EQUIPMENT GROUP	
Code	Description
4WT	Work Truck Preferred Equipment Group, includes standard equipment
WHEELS	
Code	Description
RT3	Wheels, 18" X 8.0" (45.7 cm x 20.3 cm), steel, (STD)
TIRES	
Code	Description
QWJ	Tires, LT265/70R18, all-season blackwall, (STD)
PAINT	
Code	Description
GAZ	Summit White
SEAT TYPE	
Code	Description
AR9	Seats, front bucket, (STD)
SEAT TRIM	
Code	Description
H9F	Black, Evotex seat trim
ADDITIONAL EQUIPMENT	
Code	Description
VBP	LPO, Power Distribution Box, (dealer-installed)
CGN	Chevytec spray-on bedliner, Black, (does not include spray-on liner on tailgate due to Black composite inner panel)
RIA	LPO, All-weather floor liners, (dealer-installed)
RYC	LPO, All-Weather eTrunk Mat, (dealer-installed)

CHARGING CORD	
Code	Description
PSC	Dual Level Charge Cord, dual-mode, portable, 120-volt (1.4 kW) and 240-volt (7.7 kW) capability, swappable NEMA 5-15 and NEMA 14-50 plugs with SAE J1772 vehicle connection
GVWR	
Code	Description
C5F	GVWR, 9990 lbs. (4531 kg)

2026 Fleet/Non-Retail Chevrolet Silverado EV e4WD Crew Cab Standard Range Work Truck

WINDOW STICKER

2026 Chevrolet Silverado EV e4WD Crew Cab Standard Range Work Truck		
CODE	MODEL	MSRP
CT35843	2026 Chevrolet Silverado EV e4WD Crew Cab Standard Range Work Truck	\$52,800.00
OPTIONS		
YF5	Emissions, California state requirements	\$500.00
EN0	Engine, none, (STD)	\$0.00
MF1	Transmission, none, (STD)	\$0.00
4WT	Work Truck Preferred Equipment Group, includes standard equipment	\$0.00
RT3	Wheels, 18" X 8.0" (45.7 cm x 20.3 cm), steel, (STD)	\$0.00
QWJ	Tires, LT265/70R18, all-season blackwall, (STD)	\$0.00
GAZ	Summit White	\$0.00
AR9	Seats, front bucket, (STD)	\$0.00
H9F	Black, Evotex seat trim	\$0.00
VBP	LPO, Power Distribution Box, (dealer-installed)	\$695.00
CGN	Chevytec spray-on bedliner, Black, (does not include spray-on liner on tailgate due to Black composite inner panel)	\$545.00
RIA	LPO, All-weather floor liners, (dealer-installed)	\$165.00
RYC	LPO, All-Weather eTrunk Mat, (dealer-installed)	\$150.00
PSC	Dual Level Charge Cord, dual-mode, portable, 120-volt (1.4 kW) and 240-volt (7.7 kW) capability, swappable NEMA 5-15 and NEMA 14-50 plugs with SAE J1772 vehicle connection	\$0.00
C5F	GVWR, 9990 lbs. (4531 kg)	\$0.00
Please note selected options override standard equipment		
SUBTOTAL		\$54,855.00
Advert/ Adjustments		\$0.00
Manufacturer Destination Charge		\$2,595.00
TOTAL PRICE		\$57,450.00
Est City: N/A MPG Est Highway: N/A MPG Est Highway Cruising Range: N/A mi		

Any performance-related calculations are offered solely as guidelines. Actual unit performance will depend on your operating conditions.

Notes

Standard Equipment

MECHANICAL

Engine, none (STD)
Battery Pack, Standard Range (Up to 510 hp and 490 lb-ft of torque in Tow/Haul Mode.) (STD)
Transmission, none (STD)
Dual Motor 4WD Performance Torque Vectoring Dual Motor 4WD (Electronic), 2 motors (1 front & 1 rear electric drive unit) (STD)
Dual Level Charge Cord, dual-mode portable, 120-volt (1.4 kW) and 240-volt (7.7 kW) capability, swappable NEMA 5-15 and NEMA 14-50 plugs with SAE J1772 vehicle connection
GVWR, 9990 lbs. (4531 kg)

EXTERIOR

Wheels, 18" X 8.0" (45.7 cm x 20.3 cm), steel (STD)
Tires, LT265/70R18, all-season blackwall (STD)

INTERIOR

Seats, front bucket (STD)

ADDITIONAL EQUIPMENT

Assisted Driving Package includes (UGN) Enhanced Automatic Emergency Braking, (UVZ) Reverse Automatic Braking, (UFB) Rear Cross Traffic Braking, (CTB) Intersection Automatic Emergency Braking, (UKK) Rear Pedestrian Alert, (HS1) Safety Alert Seat, (UOW) Side Bicyclist Alert, (UVX) Traffic Sign Recognition, (UV2) HD Surround Vision and (KSG) Adaptive Cruise Control (Includes (UKI) Blind Zone Steering Assist and (UKM) Lane Keep Assist with Lane Departure Warning.)
Pickup bed, 5 ft 11 inches
Electronic Precision Shift electronic transmission range selector with Low selection for throttle off regenerative braking and one-pedal driving capability
Emission system zero emission vehicle (ZEV)
Chassis, Dual Motor 4WD
Front Drive Unit 1-motor, Integrated Inverter, Park System
Rear Drive Unit 1-motor, Integrated Inverter
DC fast charging (14MOD is 475V, up to 220kW)
Charging module, 11.5 kW high-voltage
Vehicle-to-home all V2H-capable GM EV's can provide power to your properly equipped home in a blackout to all equipment groups (The GM Energy PowerShift Charger and GM Energy V2H Enablement Kit requires an adequately charged and properly equipped GM EV having bidirectional charging capabilities, a properly equipped home, and proper grid interconnection. Some eligible 24MY EVs will require a dealership or over-the-air update to enable bidirectional charging. Weather conditions, life of the battery, vehicle variation and usage, and other external factors may impact the duration of power supply. Power supply may be interrupted. It is not recommended that the following devices be powered with the GM Energy PowerShift Charger and V2H Enablement Kit: Medical Devices.)
Suspension, 4-wheel independent suspension with premium ride and handling
Brakes, front and rear sliding caliper disc with DURALIFE rotors, with Variable Regen on Demand capability
Brake rotor, FNC
Trailer brake controller, integrated
Tow/Haul Mode

Jack, mechanical, with tools located in the eTrunk
Wheel, spare, 18" X 8.0" (45.7 cm x 20.3 cm), steel
Tire, spare LT225/65R18, all-season blackwall
Shutters, front upper and lower grille, active
IntelliBeam, automatic high beam on/off
Headlamps, LED with LED Daytime Running Lamps
Tail lamps, LED
LED Cargo Area Lighting located in cargo bed activated with switch on instrument panel
Mirrors, outside heated power-adjustable
Mirror caps, painted Black
Window, front side, solar absorbing
Window, rear side, solar absorbing, privacy tinting
Glass, deep-tinted, rear door and rear cab
Tailgate, standard
Tailgate, gate function manual with EZ Lift
Tailgate, locking
Door handles, body-color
SiriusXM Trial Subscription (IMPORTANT: the SiriusXM trial subscription is not provided on vehicles that are ordered for Fleet Daily Rental ("FDR") use. Trial subscription is subject to the SiriusXM Customer Agreement and privacy policy, visit www.siriusxm.com which includes full terms and how to cancel. All fees, content, features, and availability are subject to change.)
Audio System, 17.7" diagonal advanced color LCD display with Google built-in compatibility (select service plan required, terms and limitations apply), including navigation capability, connected apps, personalized profiles for each driver's settings, Natural Voice Recognition
Audio system feature, 6-speaker system
Wi-Fi Hotspot capable (Terms and limitations apply. See onstar.com or dealer for details.)
5G vehicle connectivity
Evotex seat trim
Seat adjuster, driver 6-way manual
Seat adjuster, front passenger 4-way manual
Seat, rear 60/40 folding bench
Center console, floor-mounted 4 cup holders, USB port, Auxiliary and 120V Power Outlets
Floor Covering, all-weather vinyl flooring
Steering Wheel, urethane
Steering column, manual tilt and telescoping
Steering wheel audio controls
Driver Information Center 11" diagonal display with fully digital color
Windows, remote Express-Down, front and rear door windows
Door locks, power
Remote vehicle starter system pre-conditioning
Keyless Open and Start includes remote keyless entry
Adaptive Cruise Control (Included with (AS2) Assisted Driving Package.)
Theft-deterrent system, unauthorized entry
Alarm, remote panic
USB Ports, 2, Type-C Charge/Data ports located on floor console
USB Ports, rear, dual, Type-C charge-only
Power outlet, front console, 12-volt

Power outlet, 120-volt, on back of floor console
Power outlet, 110-volt, located in the eTrunk
Power inverter, off power mode
Air conditioning, dual-zone automatic climate control
Air vents, rear, heating/cooling
Air filter, pollutant
Air conditioning, refrigerant, low GWP
Defogger, rear-window electric
Sensor, cabin humidity and windshield temperature
Map pocket, front passenger seatback
Mirror, inside rearview manual tilt, day/night
eTrunk, lockable weather-proof and lit compartment with 120 volt outlet, cargo tie-downs and drain holes
Enhanced Automatic Emergency Braking (Included with (AS2) Assisted Driving Package.)
Reverse Automatic Braking (Included with (AS2) Assisted Driving Package.)
Rear Cross Traffic Braking (Included with (AS2) Assisted Driving Package.)
Front Pedestrian and Bicyclist Braking
Intersection Automatic Emergency Braking intersection alert, braking (Included with (AS2) Assisted Driving Package.)
StabiliTrak, Stability Control System with Proactive Roll Avoidance and traction control includes electronic trailer sway control and hill start assist
Airbags, Frontal airbags for driver and front passenger; Seat-mounted side-impact airbags for driver and front outboard passenger; Head-curtain airbags for front and rear outboard seating positions; Includes front outboard Passenger Sensing System for frontal passenger airbag (Always use seat belts and child restraints. Children are safer when properly secured in a rear seat in the appropriate child restraint. See the Owner's Manual for more information.)
OnStar Services capable (See onstar.com for details and limitations. Services vary by model. Service plan required.)
Side Bicyclist Alert (Included with (AS2) Assisted Driving Package.)
LED Reflective Windshield Collision Alert
Traffic Sign Recognition (Included with (AS2) Assisted Driving Package.)
HD Surround Vision with Trailer View Camera Provision (Included with (AS2) Assisted Driving Package.)
Blind Zone Steering Assist (Included with (AS2) Assisted Driving Package.)
Lane Keep Assist with Lane Departure Warning, enhanced (Included with (AS2) Assisted Driving Package.)
Front and Rear Parking Assist
Hitch Guidance
Following Distance Indicator
Forward Collision alert
Rear Pedestrian Alert (Included with (AS2) Assisted Driving Package.)
Rear Seat Reminder
Seat Belt adjustable Guide Loops, front row
Seat Belt, front passenger presence detector
Seat belt, rear passenger presence detector
Buckle to Drive prevents vehicle from being shifted out of Park until driver seat belt is fastened; times out after 20 seconds and encourages seat belt use, can be turned on and off in Settings or Teen Driver menu
LATCH system (Lower Anchors and Tethers for CHildren) for child restraints seats
Safety Alert Seat (Included with (AS2) Assisted Driving Package.)
Door locks, rear child security lock manual child lock system (rear door latch)
Teen Driver configurable feature that lets you activate customizable vehicle settings associated with a key fob, to help encourage safe driving behavior. It can limit certain available vehicle features, and it prevents certain safety systems from being turned off. An in-vehicle report card gives you information on driving habits and helps you to continue to coach your new driver

Tire Pressure Monitoring System auto learn, includes Tire Fill Alert

OnStar Basics (OnStar Fleet Basics for Fleet) Drive confidently with core OnStar services including remote commands, built-in voice assistance, real-time traffic and navigation, and Automatic Crash Response to help if you're in need (Requires (UE1) OnStar. OnStar Basics includes remote commands, Navigation, Voice Assistance, and Automatic Crash Response, for eligible vehicles with compatible software. OnStar Basics is standard for 8 years; OnStar plan, working electrical system, cell reception and GPS signal required. OnStar links to emergency services. Service coverage varies with conditions and location. Service availability, features and functionality vary by device and software version. See onstar.com for details and limitations.)

Trailer Information Label



National Auto Fleet Group

A Division of Chevrolet of Watsonville

490 Auto Center Drive, Watsonville, CA 95076

(855) 289-6572 • (831) 480-8497 Fax

Fleet@NationalAutoFleetGroup.com

2/18/2026
4/29/2026 Re-Configured

Government Quote ID: **42432 R4**

Order Cut Off Date: **7/24/2026**

Johnson Woo
City of Burlingame
Public Works Department

1361 N. Carolan Ave
Burlingame, California, 94010

Dear Johnson Woo,

National Auto Fleet Group is pleased to quote the following vehicle(s) for your consideration.

One (1) New/Unused (2026 Chevrolet Silverado EV (CT35843) e4WD Crew Cab Standard Range Work Truck, West Truck Fab Installed; Decked Storage Solutions Drawer System, Accessory pack, per est 86845) and delivered to your specified location, each for

	One Unit (MSRP)	One Unit	Total % Savings	Total Savings
Contract Price	\$59,400.00	\$57,604.06	3.023 %	\$1,795.94
West Truck Fab Installed; Decked Storage Solutions Drawer System, Accessory pack, per est 86845		\$4,730.00		
Tax (9.6300 %)		\$6,002.77		
Tire fee		\$8.75		
Total		\$68,345.58		

*Per the attached specifications. Additional upfit options included; **Required progress payment for chassis due upon delivery to installer. Invoice for upfit due thereafter upon completion.**

This vehicle(s) is available under the **Sourcewell Contract 081325-NAF**. Please reference this Contract number on all purchase order to National Auto Fleet Group. Payment terms are Net 20 days after receipt of vehicle. Thank you in advance for your consideration. Should you have any questions, please do not hesitate to call.

Sincerely,

Jesse Cooper
Account Manager
Email: Fleet@NationalAutoFleetGroup.com
Office: (855) 289-6572
Fax: (831) 480-8497



GMC

Purchase Order Instructions & Resources

Once units are scheduled by OEM, no cancellations are accepted

In order to finalize your purchase please submit this purchase packet to your governing body for a purchase order approval and submit your purchase order in the following way:

Email: Fleet@NationalAutoFleetGroup.com

Fax: (831) 480-8497

Mail: National Auto Fleet Group

490 Auto Center Drive

Watsonville, CA 95076

We will send a courtesy confirmation for your order and a W-9 if needed.

Additional Resources

Learn how to track your vehicle: www.NAFGETA.com

Use the upfitter of your choice: www.NAFGpartner.com

Vehicle Status: ETA@NationalAutoFleetGroup.com

General Inquiries: Fleet@NationalAutoFleetGroup.com

For general questions or assistance please contact our main office at:

1-855-289-6572

Western Truck Fabrication, Inc
1923 W Winton Ave
Hayward, CA 94545-1205
5107859994
www.westerntruckfab.com



QUOTE

ADDRESS

NATIONAL AUTO FLEET
GROUP
490 AUTO CENTER DRIVE
WATSONVILLE, CA 95076

SHIP TO

NATIONAL AUTO FLEET
GROUP
490 AUTO CENTER DRIVE
WATSONVILLE, CA 95076

QUOTE # 86845

DATE 04/24/2026

WTF REP

SAMUEL MEYERS

DEALER SALES REP

DAN AGATEP

ACTIVITY	QTY	DESCRIPTION
Truck Details	1	YEAR/MAKE: 2026 CHEVROLET MODEL: EV SILVERADO e4WD WB: CA: CAB TYPE: FUEL: ELECTRIC
MATERIALS MISC	1	FURNISH AND INSTALL DECKED STORAGE SOLUTIONS DRAWER SYSTEM AND ACCESSORY PACK INTO CARGO AREA OF EV SILVERADO
PICK-UP AND DELIVERY	1	DELIVER VEHICLE TO CITY OF BURLINGAME: 1361 N. CAROLAN AVE BURLINGAME, CA 94010
		CONTACT: ANTHONY MARTIN REFERENCE NAT AUTO QUOTE 42432R1

PLEASE REVIEW AND READ QUOTE CAREFULLY.
THIS QUOTE IS GOOD FOR 30 DAYS FROM THE
DATE OF CREATION.
UPON ACCEPTANCE OF THIS QUOTE CIRCLE
OPTIONS DESIRED.
PLEASE SIGN AND EMAIL BACK TO SALESPERSON.

Accepted By: _____

Date: _____

PO#: _____

Chasis ETA: _____

VIN #: _____

SUBTOTAL	4,300.00
TAX	0.00
TOTAL	\$4,300.00

SPECIAL ORDERS ARE NON RETURNABLE AND NON REFUNDABLE.
ALL RETURNED PARTS ARE SUBJECT TO A 25% RESTOCKING FEE.
CREDIT CARD PAYMENTS OVER \$1,000 ARE SUBJECT TO A 3% PROCESSING FEE.

NOT RESPONSIBLE FOR LOST OR MISSING EQUIPMENT

Accepted By

Accepted Date

SPECIAL ORDERS ARE NON RETURNABLE AND NON REFUNDABLE.
ALL RETURNED PARTS ARE SUBJECT TO A 25% RESTOCKING FEE.
CREDIT CARD PAYMENTS OVER \$1,000 ARE SUBJECT TO A 3% PROCESSING FEE.

****NOT RESPONSIBLE FOR LOST OR MISSING EQUIPMENT****

Vehicle Configuration Options

EMISSIONS	
Code	Description
YF5	Emissions, California state requirements
ENGINE	
Code	Description
EN0	Engine, none, (STD)
TRANSMISSION	
Code	Description
MF1	Transmission, none, (STD)
PREFERRED EQUIPMENT GROUP	
Code	Description
4WT	Work Truck Preferred Equipment Group, includes standard equipment
WHEELS	
Code	Description
RT3	Wheels, 18" X 8.0" (45.7 cm x 20.3 cm), steel, (STD)
TIRES	
Code	Description
QWJ	Tires, LT265/70R18, all-season blackwall, (STD)
PAINT	
Code	Description
GAZ	Summit White
SEAT TYPE	
Code	Description
AR9	Seats, front bucket, (STD)
SEAT TRIM	
Code	Description
H9F	Black, Evotex seat trim
ADDITIONAL EQUIPMENT	
Code	Description
VBP	LPO, Power Distribution Box, (dealer-installed)
VOZ	LPO, Hard Folding Truck Bed cover, by RealTruck Advantage, (dealer-installed)
CGN	Chevytec spray-on bedliner, Black, (does not include spray-on liner on tailgate due to Black composite inner panel)
RIA	LPO, All-weather floor liners, (dealer-installed)
RYC	LPO, All-Weather eTrunk Mat, (dealer-installed)

CHARGING CORD

Code	Description
PSC	Dual Level Charge Cord, dual-mode, portable, 120-volt (1.4 kW) and 240-volt (7.7 kW) capability, swappable NEMA 5-15 and NEMA 14-50 plugs with SAE J1772 vehicle connection
GVWR	
Code	Description
C5F	GVWR, 9990 lbs. (4531 kg)

2026 Fleet/Non-Retail Chevrolet Silverado EV e4WD Crew Cab Standard Range Work Truck

WINDOW STICKER

2026 Chevrolet Silverado EV e4WD Crew Cab Standard Range Work Truck		
CODE	MODEL	MSRP
CT35843	2026 Chevrolet Silverado EV e4WD Crew Cab Standard Range Work Truck	\$52,800.00
OPTIONS		
YF5	Emissions, California state requirements	\$500.00
EN0	Engine, none, (STD)	\$0.00
MF1	Transmission, none, (STD)	\$0.00
4WT	Work Truck Preferred Equipment Group, includes standard equipment	\$0.00
RT3	Wheels, 18" X 8.0" (45.7 cm x 20.3 cm), steel, (STD)	\$0.00
QWJ	Tires, LT265/70R18, all-season blackwall, (STD)	\$0.00
GAZ	Summit White	\$0.00
AR9	Seats, front bucket, (STD)	\$0.00
H9F	Black, Evotex seat trim	\$0.00
VBP	LPO, Power Distribution Box, (dealer-installed)	\$695.00
VOZ	LPO, Hard Folding Truck Bed cover, by RealTruck Advantage, (dealer-installed)	\$1,950.00
CGN	Chevytec spray-on bedliner, Black, (does not include spray-on liner on tailgate due to Black composite inner panel)	\$545.00
RIA	LPO, All-weather floor liners, (dealer-installed)	\$165.00
RYC	LPO, All-Weather eTrunk Mat, (dealer-installed)	\$150.00
PSC	Dual Level Charge Cord, dual-mode, portable, 120-volt (1.4 kW) and 240-volt (7.7 kW) capability, swappable NEMA 5-15 and NEMA 14-50 plugs with SAE J1772 vehicle connection	\$0.00
C5F	GVWR, 9990 lbs. (4531 kg)	\$0.00
Please note selected options override standard equipment		
SUBTOTAL		\$56,805.00
Advert/ Adjustments		\$0.00
Manufacturer Destination Charge		\$2,595.00
TOTAL PRICE		\$59,400.00
Est City: N/A MPG Est Highway: N/A MPG Est Highway Cruising Range: N/A mi		

Any performance-related calculations are offered solely as guidelines. Actual unit performance will depend on your operating conditions.

Notes

Standard Equipment

MECHANICAL

Engine, none (STD)
Battery Pack, Standard Range (Up to 510 hp and 490 lb-ft of torque in Tow/Haul Mode.) (STD)
Transmission, none (STD)
Dual Motor 4WD Performance Torque Vectoring Dual Motor 4WD (Electronic), 2 motors (1 front & 1 rear electric drive unit) (STD)
Dual Level Charge Cord, dual-mode portable, 120-volt (1.4 kW) and 240-volt (7.7 kW) capability, swappable NEMA 5-15 and NEMA 14-50 plugs with SAE J1772 vehicle connection
GVWR, 9990 lbs. (4531 kg)

EXTERIOR

Wheels, 18" X 8.0" (45.7 cm x 20.3 cm), steel (STD)
Tires, LT265/70R18, all-season blackwall (STD)

INTERIOR

Seats, front bucket (STD)

ADDITIONAL EQUIPMENT

Assisted Driving Package includes (UGN) Enhanced Automatic Emergency Braking, (UVZ) Reverse Automatic Braking, (UFB) Rear Cross Traffic Braking, (CTB) Intersection Automatic Emergency Braking, (UKK) Rear Pedestrian Alert, (HS1) Safety Alert Seat, (UOW) Side Bicyclist Alert, (UVX) Traffic Sign Recognition, (UV2) HD Surround Vision and (KSG) Adaptive Cruise Control (Includes (UKI) Blind Zone Steering Assist and (UKM) Lane Keep Assist with Lane Departure Warning.)
Pickup bed, 5 ft 11 inches
Electronic Precision Shift electronic transmission range selector with Low selection for throttle off regenerative braking and one-pedal driving capability
Emission system zero emission vehicle (ZEV)
Chassis, Dual Motor 4WD
Front Drive Unit 1-motor, Integrated Inverter, Park System
Rear Drive Unit 1-motor, Integrated Inverter
DC fast charging (14MOD is 475V, up to 220kW)
Charging module, 11.5 kW high-voltage
Vehicle-to-home all V2H-capable GM EV's can provide power to your properly equipped home in a blackout to all equipment groups (The GM Energy PowerShift Charger and GM Energy V2H Enablement Kit requires an adequately charged and properly equipped GM EV having bidirectional charging capabilities, a properly equipped home, and proper grid interconnection. Some eligible 24MY EVs will require a dealership or over-the-air update to enable bidirectional charging. Weather conditions, life of the battery, vehicle variation and usage, and other external factors may impact the duration of power supply. Power supply may be interrupted. It is not recommended that the following devices be powered with the GM Energy PowerShift Charger and V2H Enablement Kit: Medical Devices.)
Suspension, 4-wheel independent suspension with premium ride and handling
Brakes, front and rear sliding caliper disc with DURALIFE rotors, with Variable Regen on Demand capability
Brake rotor, FNC
Trailer brake controller, integrated
Tow/Haul Mode

Jack, mechanical, with tools located in the eTrunk
Wheel, spare, 18" X 8.0" (45.7 cm x 20.3 cm), steel
Tire, spare LT225/65R18, all-season blackwall
Shutters, front upper and lower grille, active
IntelliBeam, automatic high beam on/off
Headlamps, LED with LED Daytime Running Lamps
Tail lamps, LED
LED Cargo Area Lighting located in cargo bed activated with switch on instrument panel
Mirrors, outside heated power-adjustable
Mirror caps, painted Black
Window, front side, solar absorbing
Window, rear side, solar absorbing, privacy tinting
Glass, deep-tinted, rear door and rear cab
Tailgate, standard
Tailgate, gate function manual with EZ Lift
Tailgate, locking
Door handles, body-color
SiriusXM Trial Subscription (IMPORTANT: the SiriusXM trial subscription is not provided on vehicles that are ordered for Fleet Daily Rental ("FDR") use. Trial subscription is subject to the SiriusXM Customer Agreement and privacy policy, visit www.siriusxm.com which includes full terms and how to cancel. All fees, content, features, and availability are subject to change.)
Audio System, 17.7" diagonal advanced color LCD display with Google built-in compatibility (select service plan required, terms and limitations apply), including navigation capability, connected apps, personalized profiles for each driver's settings, Natural Voice Recognition
Audio system feature, 6-speaker system
Wi-Fi Hotspot capable (Terms and limitations apply. See onstar.com or dealer for details.)
5G vehicle connectivity
Evotex seat trim
Seat adjuster, driver 6-way manual
Seat adjuster, front passenger 4-way manual
Seat, rear 60/40 folding bench
Center console, floor-mounted 4 cup holders, USB port, Auxiliary and 120V Power Outlets
Floor Covering, all-weather vinyl flooring
Steering Wheel, urethane
Steering column, manual tilt and telescoping
Steering wheel audio controls
Driver Information Center 11" diagonal display with fully digital color
Windows, remote Express-Down, front and rear door windows
Door locks, power
Remote vehicle starter system pre-conditioning
Keyless Open and Start includes remote keyless entry
Adaptive Cruise Control (Included with (AS2) Assisted Driving Package.)
Theft-deterrent system, unauthorized entry
Alarm, remote panic
USB Ports, 2, Type-C Charge/Data ports located on floor console
USB Ports, rear, dual, Type-C charge-only
Power outlet, front console, 12-volt
Power outlet, 120-volt, on back of floor console

Power outlet, 110-volt, located in the eTrunk
Power inverter, off power mode
Air conditioning, dual-zone automatic climate control
Air vents, rear, heating/cooling
Air filter, pollutant
Air conditioning, refrigerant, low GWP
Defogger, rear-window electric
Sensor, cabin humidity and windshield temperature
Map pocket, front passenger seatback
Mirror, inside rearview manual tilt, day/night
eTrunk, lockable weather-proof and lit compartment with 120 volt outlet, cargo tie-downs and drain holes
Enhanced Automatic Emergency Braking (Included with (AS2) Assisted Driving Package.)
Reverse Automatic Braking (Included with (AS2) Assisted Driving Package.)
Rear Cross Traffic Braking (Included with (AS2) Assisted Driving Package.)
Front Pedestrian and Bicyclist Braking
Intersection Automatic Emergency Braking intersection alert, braking (Included with (AS2) Assisted Driving Package.)
StabiliTrak, Stability Control System with Proactive Roll Avoidance and traction control includes electronic trailer sway control and hill start assist
Airbags, Frontal airbags for driver and front passenger; Seat-mounted side-impact airbags for driver and front outboard passenger; Head-curtain airbags for front and rear outboard seating positions; Includes front outboard Passenger Sensing System for frontal passenger airbag (Always use seat belts and child restraints. Children are safer when properly secured in a rear seat in the appropriate child restraint. See the Owner's Manual for more information.)
OnStar Services capable (See onstar.com for details and limitations. Services vary by model. Service plan required.)
Side Bicyclist Alert (Included with (AS2) Assisted Driving Package.)
LED Reflective Windshield Collision Alert
Traffic Sign Recognition (Included with (AS2) Assisted Driving Package.)
HD Surround Vision with Trailer View Camera Provision (Included with (AS2) Assisted Driving Package.)
Blind Zone Steering Assist (Included with (AS2) Assisted Driving Package.)
Lane Keep Assist with Lane Departure Warning, enhanced (Included with (AS2) Assisted Driving Package.)
Front and Rear Parking Assist
Hitch Guidance
Following Distance Indicator
Forward Collision alert
Rear Pedestrian Alert (Included with (AS2) Assisted Driving Package.)
Rear Seat Reminder
Seat Belt adjustable Guide Loops, front row
Seat Belt, front passenger presence detector
Seat belt, rear passenger presence detector
Buckle to Drive prevents vehicle from being shifted out of Park until driver seat belt is fastened; times out after 20 seconds and encourages seat belt use, can be turned on and off in Settings or Teen Driver menu
LATCH system (Lower Anchors and Tethers for CHildren) for child restraints seats
Safety Alert Seat (Included with (AS2) Assisted Driving Package.)
Door locks, rear child security lock manual child lock system (rear door latch)
Teen Driver configurable feature that lets you activate customizable vehicle settings associated with a key fob, to help encourage safe driving behavior. It can limit certain available vehicle features, and it prevents certain safety systems from being turned off. An in-vehicle report card gives you information on driving habits and helps you to continue to coach your new driver
Tire Pressure Monitoring System auto learn, includes Tire Fill Alert

OnStar Basics (OnStar Fleet Basics for Fleet) Drive confidently with core OnStar services including remote commands, built-in voice assistance, real-time traffic and navigation, and Automatic Crash Response to help if you're in need (Requires (UE1) OnStar. OnStar Basics includes remote commands, Navigation, Voice Assistance, and Automatic Crash Response, for eligible vehicles with compatible software. OnStar Basics is standard for 8 years; OnStar plan, working electrical system, cell reception and GPS signal required. OnStar links to emergency services. Service coverage varies with conditions and location. Service availability, features and functionality vary by device and software version. See onstar.com for details and limitations.)

Trailer Information Label



National Auto Fleet Group

A Division of Chevrolet of Watsonville
490 Auto Center Drive, Watsonville, CA 95076
(855) 289-6572 • (831) 480-8497 Fax
Fleet@NationalAutoFleetGroup.com

2/18/2026
4/29/2026 Re-Configured

Government Quote ID: **42434 R2**

Order Cut Off Date: **7/24/2026**

Johnson Woo
City of Burlingame
Public Works Department
1361 N. Carolan Ave
Burlingame, California, 94010

Dear Johnson Woo,

National Auto Fleet Group is pleased to quote the following vehicle(s) for your consideration.

One (1) New/Unused (2026 Chevrolet Silverado EV (CT35843) e4WD Crew Cab Standard Range Work Truck, Western Truck Fab Installed; MAXON C2-60-1342 TP38 + pkg, per estimate 86848) and delivered to your specified location, each for

	One Unit (MSRP)	One Unit	Total % Savings	Total Savings
Contract Price	\$57,450.00	\$55,680.70	3.080 %	\$1,769.30
Western Truck Fab Installed; MAXON C2-60-1342 TP38		\$17,523.00		
+ pkg, per estimate 86848				
Tax (9.6300 %)		\$7,049.52		
Tire fee		\$8.75		
Total		\$80,261.96		

*Per the attached specifications. Additional upfit options included; **Required progress payment for chassis due upon delivery to installer. Invoice for upfit due thereafter upon completion.**

This vehicle(s) is available under the **Sourcewell Contract 081325-NAF**. Please reference this Contract number on all purchase order to National Auto Fleet Group. Payment terms are Net 20 days after receipt of vehicle. Thank you in advance for your consideration. Should you have any questions, please do not hesitate to call.

Sincerely,

Jesse Cooper
Account Manager
Email: Fleet@NationalAutoFleetGroup.com
Office: (855) 289-6572
Fax: (831) 480-8497



Purchase Order Instructions & Resources

Once units are scheduled by OEM, no cancellations are accepted

In order to finalize your purchase please submit this purchase packet to your governing body for a purchase order approval and submit your purchase order in the following way:

Email: Fleet@NationalAutoFleetGroup.com

Fax: (831) 480-8497

Mail: National Auto Fleet Group

490 Auto Center Drive

Watsonville, CA 95076

We will send a courtesy confirmation for your order and a W-9 if needed.

Additional Resources

Learn how to track your vehicle: www.NAFGETA.com

Use the upfitter of your choice: www.NAFGpartner.com

Vehicle Status: ETA@NationalAutoFleetGroup.com

General Inquiries: Fleet@NationalAutoFleetGroup.com

For general questions or assistance please contact our main office at:

1-855-289-6572

Western Truck Fabrication, Inc
 1923 W Winton Ave
 Hayward, CA 94545-1205
 5107859994
 www.westerntruckfab.com



ACCOUNTING

ADDRESS

NATIONAL AUTO FLEET
 GROUP
 490 AUTO CENTER DRIVE
 WATSONVILLE, CA 95076

SHIP TO

NATIONAL AUTO FLEET
 GROUP
 490 AUTO CENTER DRIVE
 WATSONVILLE, CA 95076

ACCOUNTING # 86848

DATE 04/24/2026

WTF REP

SAMUEL MEYERS

DEALER SALES REP

DAN AGATEP

ACTIVITY	QTY	DESCRIPTION	RATE	AMOUNT
Truck Details	1	YEAR/MAKE: MODEL: WB: CA: CAB TYPE: FUEL:	0.00	0.00
MATERIALS MISC	1	FURNISH AND INSTALL ONE (1) MAXON C2-60-1342 TP38 LIFT GATE ONTO SILVERADO EV: LIFT CAPACITY: 1300LBS LOAD AREA: 55" X 38" + 4" BED HEIGHT RANGE: 28" TO 42" WEIGHT: 510LBS PAINTED BLACK	5,500.00	5,500.00T
MATERIALS MISC	1	FURNISH AND INSTALL ONE (1) TORQUELIFT LIFT GATE INSTALL KIT FOR SILVERADO EV; WITH BED EXTENSION HITCH EXTENSION FOR TOWING 5000LBS **500LB TONGUE WEIGHT**	3,230.00	3,230.00T
MATERIALS MISC	1	FURNISH AND INSTALL AUXILLIARY BATTERY SYSTEM TO POWER MAXON C2-60-1342 TP38 LIFTGATE INSTALL DC-DC CHARGER INSTALL CIRBUIT BREAKER FABRICATE AND INSTALL AUXILLIARY BATTERY CAGE PROTECTOR	3,000.00	3,000.00T
MATERIALS MISC	1	FURNISH AND INSTALL ONE (1) SAFETY RACK BY BACK RACK, P/N: 19435487 CAB PROTECTOR	1,200.00	1,200.00T
MATERIALS MISC	1	FURNISH AND INSTALL ONE (1) FRONT MOUNTED CONE HOLDER FOR LARGE CONES	1,350.00	1,350.00T
MATERIALS MISC	1	FURNISH AND INSTALL ONE (1) PERFORATED TOOL BASKET	1,500.00	1,500.00T

ACTIVITY	QTY	DESCRIPTION	RATE	AMOUNT
		INSTALLED IN CARDO AREA, MOUNTED ABOVE DRIVER SIDE WHEEL WELL. TOOL BASKET APPROX DIMENSIONS 12" WIDE X 28" LONG **TO BE FLUSH WITH SIDE RAILS** PAINTED BLACK		
PICK-UP AND DELIVERY	1	DELIVERY VEHICLE TO CITY OF BURLINGAME: 1361 N. CAROLEN AVENUE BURLINGAME, CA 94010 REFERENCE NATIONAL AUTO QUOTE 42434	150.00	150.00

PLEASE REVIEW AND READ QUOTE CAREFULLY.
THIS QUOTE IS GOOD FOR 30 DAYS FROM THE DATE OF CREATION.
UPON ACCEPTANCE OF THIS QUOTE CIRCLE OPTIONS DESIRED.
PLEASE SIGN AND EMAIL BACK TO SALESPERSON.
Accepted By: _____
Date: _____
PO#: _____
Chasis ETA: _____
VIN #: _____

SUBTOTAL 15,930.00
TAX 0.00
TOTAL **\$15,930.00**

Accepted By

Accepted Date

Vehicle Configuration Options

EMISSIONS	
Code	Description
YF5	Emissions, California state requirements
ENGINE	
Code	Description
EN0	Engine, none, (STD)
TRANSMISSION	
Code	Description
MF1	Transmission, none, (STD)
PREFERRED EQUIPMENT GROUP	
Code	Description
4WT	Work Truck Preferred Equipment Group, includes standard equipment
WHEELS	
Code	Description
RT3	Wheels, 18" X 8.0" (45.7 cm x 20.3 cm), steel, (STD)
TIRES	
Code	Description
QWJ	Tires, LT265/70R18, all-season blackwall, (STD)
PAINT	
Code	Description
GAZ	Summit White
SEAT TYPE	
Code	Description
AR9	Seats, front bucket, (STD)
SEAT TRIM	
Code	Description
H9F	Black, Evotex seat trim
ADDITIONAL EQUIPMENT	
Code	Description
VBP	LPO, Power Distribution Box, (dealer-installed)

CGN	Chevytec spray-on bedliner, Black, (does not include spray-on liner on tailgate due to Black composite inner panel)
RIA	LPO, All-weather floor liners, (dealer-installed)
RYC	LPO, All-Weather eTrunk Mat, (dealer-installed)
CHARGING CORD	
Code	Description
PSC	Dual Level Charge Cord, dual-mode, portable, 120-volt (1.4 kW) and 240-volt (7.7 kW) capability, swappable NEMA 5-15 and NEMA 14-50 plugs with SAE J1772 vehicle connection
GVWR	
Code	Description
C5F	GVWR, 9990 lbs. (4531 kg)

2026 Fleet/Non-Retail Chevrolet Silverado EV e4WD Crew Cab Standard Range Work Truck

WINDOW STICKER

2026 Chevrolet Silverado EV e4WD Crew Cab Standard Range Work Truck		
CODE	MODEL	MSRP
CT35843	2026 Chevrolet Silverado EV e4WD Crew Cab Standard Range Work Truck	\$52,800.00
OPTIONS		
YF5	Emissions, California state requirements	\$500.00
EN0	Engine, none, (STD)	\$0.00
MF1	Transmission, none, (STD)	\$0.00
4WT	Work Truck Preferred Equipment Group, includes standard equipment	\$0.00
RT3	Wheels, 18" X 8.0" (45.7 cm x 20.3 cm), steel, (STD)	\$0.00
QWJ	Tires, LT265/70R18, all-season blackwall, (STD)	\$0.00
GAZ	Summit White	\$0.00
AR9	Seats, front bucket, (STD)	\$0.00
H9F	Black, Evotex seat trim	\$0.00
VBP	LPO, Power Distribution Box, (dealer-installed)	\$695.00
CGN	Chevytec spray-on bedliner, Black, (does not include spray-on liner on tailgate due to Black composite inner panel)	\$545.00
RIA	LPO, All-weather floor liners, (dealer-installed)	\$165.00
RYC	LPO, All-Weather eTrunk Mat, (dealer-installed)	\$150.00
PSC	Dual Level Charge Cord, dual-mode, portable, 120-volt (1.4 kW) and 240-volt (7.7 kW) capability, swappable NEMA 5-15 and NEMA 14-50 plugs with SAE J1772 vehicle connection	\$0.00
C5F	GVWR, 9990 lbs. (4531 kg)	\$0.00
Please note selected options override standard equipment		
SUBTOTAL		\$54,855.00
Advert/ Adjustments		\$0.00
Manufacturer Destination Charge		\$2,595.00
TOTAL PRICE		\$57,450.00
Est City: N/A MPG Est Highway: N/A MPG Est Highway Cruising Range: N/A mi		

Any performance-related calculations are offered solely as guidelines. Actual unit performance will depend on your operating conditions.

Notes

Standard Equipment

MECHANICAL

Engine, none (STD)
Battery Pack, Standard Range (Up to 510 hp and 490 lb-ft of torque in Tow/Haul Mode.) (STD)
Transmission, none (STD)
Dual Motor 4WD Performance Torque Vectoring Dual Motor 4WD (Electronic), 2 motors (1 front & 1 rear electric drive unit) (STD)
Dual Level Charge Cord, dual-mode portable, 120-volt (1.4 kW) and 240-volt (7.7 kW) capability, swappable NEMA 5-15 and NEMA 14-50 plugs with SAE J1772 vehicle connection
GVWR, 9990 lbs. (4531 kg)

EXTERIOR

Wheels, 18" X 8.0" (45.7 cm x 20.3 cm), steel (STD)
Tires, LT265/70R18, all-season blackwall (STD)

INTERIOR

Seats, front bucket (STD)

ADDITIONAL EQUIPMENT

Assisted Driving Package includes (UGN) Enhanced Automatic Emergency Braking, (UVZ) Reverse Automatic Braking, (UFB) Rear Cross Traffic Braking, (CTB) Intersection Automatic Emergency Braking, (UKK) Rear Pedestrian Alert, (HS1) Safety Alert Seat, (UOW) Side Bicyclist Alert, (UVX) Traffic Sign Recognition, (UV2) HD Surround Vision and (KSG) Adaptive Cruise Control (Includes (UKI) Blind Zone Steering Assist and (UKM) Lane Keep Assist with Lane Departure Warning.)
Pickup bed, 5 ft 11 inches
Electronic Precision Shift electronic transmission range selector with Low selection for throttle off regenerative braking and one-pedal driving capability
Emission system zero emission vehicle (ZEV)
Chassis, Dual Motor 4WD
Front Drive Unit 1-motor, Integrated Inverter, Park System
Rear Drive Unit 1-motor, Integrated Inverter
DC fast charging (14MOD is 475V, up to 220kW)
Charging module, 11.5 kW high-voltage
Vehicle-to-home all V2H-capable GM EV's can provide power to your properly equipped home in a blackout to all equipment groups (The GM Energy PowerShift Charger and GM Energy V2H Enablement Kit requires an adequately charged and properly equipped GM EV having bidirectional charging capabilities, a properly equipped home, and proper grid interconnection. Some eligible 24MY EVs will require a dealership or over-the-air update to enable bidirectional charging. Weather conditions, life of the battery, vehicle variation and usage, and other external factors may impact the duration of power supply. Power supply may be interrupted. It is not recommended that the following devices be powered with the GM Energy PowerShift Charger and V2H Enablement Kit: Medical Devices.)

Suspension, 4-wheel independent suspension with premium ride and handling
Brakes, front and rear sliding caliper disc with DURALIFE rotors, with Variable Regen on Demand capability
Brake rotor, FNC
Trailer brake controller, integrated
Tow/Haul Mode
Jack, mechanical, with tools located in the eTrunk
Wheel, spare, 18" X 8.0" (45.7 cm x 20.3 cm), steel
Tire, spare LT225/65R18, all-season blackwall
Shutters, front upper and lower grille, active
IntelliBeam, automatic high beam on/off
Headlamps, LED with LED Daytime Running Lamps
Tail lamps, LED
LED Cargo Area Lighting located in cargo bed activated with switch on instrument panel
Mirrors, outside heated power-adjustable
Mirror caps, painted Black
Window, front side, solar absorbing
Window, rear side, solar absorbing, privacy tinting
Glass, deep-tinted, rear door and rear cab
Tailgate, standard
Tailgate, gate function manual with EZ Lift
Tailgate, locking
Door handles, body-color
SiriusXM Trial Subscription (IMPORTANT: the SiriusXM trial subscription is not provided on vehicles that are ordered for Fleet Daily Rental ("FDR") use. Trial subscription is subject to the SiriusXM Customer Agreement and privacy policy, visit www.siriusxm.com which includes full terms and how to cancel. All fees, content, features, and availability are subject to change.)
Audio System, 17.7" diagonal advanced color LCD display with Google built-in compatibility (select service plan required, terms and limitations apply), including navigation capability, connected apps, personalized profiles for each driver's settings, Natural Voice Recognition
Audio system feature, 6-speaker system
Wi-Fi Hotspot capable (Terms and limitations apply. See onstar.com or dealer for details.)
5G vehicle connectivity
Evotex seat trim
Seat adjuster, driver 6-way manual
Seat adjuster, front passenger 4-way manual
Seat, rear 60/40 folding bench
Center console, floor-mounted 4 cup holders, USB port, Auxiliary and 120V Power Outlets
Floor Covering, all-weather vinyl flooring
Steering Wheel, urethane
Steering column, manual tilt and telescoping
Steering wheel audio controls
Driver Information Center 11" diagonal display with fully digital color
Windows, remote Express-Down, front and rear door windows

Door locks, power
Remote vehicle starter system pre-conditioning
Keyless Open and Start includes remote keyless entry
Adaptive Cruise Control (Included with (AS2) Assisted Driving Package.)
Theft-deterrent system, unauthorized entry
Alarm, remote panic
USB Ports, 2, Type-C Charge/Data ports located on floor console
USB Ports, rear, dual, Type-C charge-only
Power outlet, front console, 12-volt
Power outlet, 120-volt, on back of floor console
Power outlet, 110-volt, located in the eTrunk
Power inverter, off power mode
Air conditioning, dual-zone automatic climate control
Air vents, rear, heating/cooling
Air filter, pollutant
Air conditioning, refrigerant, low GWP
Defogger, rear-window electric
Sensor, cabin humidity and windshield temperature
Map pocket, front passenger seatback
Mirror, inside rearview manual tilt, day/night
eTrunk, lockable weather-proof and lit compartment with 120 volt outlet, cargo tie-downs and drain holes
Enhanced Automatic Emergency Braking (Included with (AS2) Assisted Driving Package.)
Reverse Automatic Braking (Included with (AS2) Assisted Driving Package.)
Rear Cross Traffic Braking (Included with (AS2) Assisted Driving Package.)
Front Pedestrian and Bicyclist Braking
Intersection Automatic Emergency Braking intersection alert, braking (Included with (AS2) Assisted Driving Package.)
StabiliTrak, Stability Control System with Proactive Roll Avoidance and traction control includes electronic trailer sway control and hill start assist
Airbags, Frontal airbags for driver and front passenger; Seat-mounted side-impact airbags for driver and front outboard passenger; Head-curtain airbags for front and rear outboard seating positions; Includes front outboard Passenger Sensing System for frontal passenger airbag (Always use seat belts and child restraints. Children are safer when properly secured in a rear seat in the appropriate child restraint. See the Owner's Manual for more information.)
OnStar Services capable (See onstar.com for details and limitations. Services vary by model. Service plan required.)
Side Bicyclist Alert (Included with (AS2) Assisted Driving Package.)
LED Reflective Windshield Collision Alert
Traffic Sign Recognition (Included with (AS2) Assisted Driving Package.)
HD Surround Vision with Trailer View Camera Provision (Included with (AS2) Assisted Driving Package.)
Blind Zone Steering Assist (Included with (AS2) Assisted Driving Package.)
Lane Keep Assist with Lane Departure Warning, enhanced (Included with (AS2) Assisted Driving Package.)
Front and Rear Parking Assist
Hitch Guidance

Following Distance Indicator
Forward Collision alert
Rear Pedestrian Alert (Included with (AS2) Assisted Driving Package.)
Rear Seat Reminder
Seat Belt adjustable Guide Loops, front row
Seat Belt, front passenger presence detector
Seat belt, rear passenger presence detector
Buckle to Drive prevents vehicle from being shifted out of Park until driver seat belt is fastened; times out after 20 seconds and encourages seat belt use, can be turned on and off in Settings or Teen Driver menu
LATCH system (Lower Anchors and Tethers for CHildren) for child restraints seats
Safety Alert Seat (Included with (AS2) Assisted Driving Package.)
Door locks, rear child security lock manual child lock system (rear door latch)
Teen Driver configurable feature that lets you activate customizable vehicle settings associated with a key fob, to help encourage safe driving behavior. It can limit certain available vehicle features, and it prevents certain safety systems from being turned off. An in-vehicle report card gives you information on driving habits and helps you to continue to coach your new driver
Tire Pressure Monitoring System auto learn, includes Tire Fill Alert
OnStar Basics (OnStar Fleet Basics for Fleet) Drive confidently with core OnStar services including remote commands, built-in voice assistance, real-time traffic and navigation, and Automatic Crash Response to help if you're in need (Requires (UE1) OnStar. OnStar Basics includes remote commands, Navigation, Voice Assistance, and Automatic Crash Response, for eligible vehicles with compatible software. OnStar Basics is standard for 8 years; OnStar plan, working electrical system, cell reception and GPS signal required. OnStar links to emergency services. Service coverage varies with conditions and location. Service availability, features and functionality vary by device and software version. See onstar.com for details and limitations.)
Trailer Information Label



National Auto Fleet Group

A Division of Chevrolet of Watsonville

490 Auto Center Drive, Watsonville, CA 95076

(855) 289-6572 • (831) 480-8497 Fax

Fleet@NationalAutoFleetGroup.com

2/25/2026

Quote ID#3408HD

Mr. Anthony Martin

City of Burlingame
1361 N. Carolan Ave.
Burlingame, CA 94010

Dear Anthony Martin,

National Auto Fleet Group is pleased to quote the following sourced item(s) for your consideration. One (1) New/Unused (**2024 Rizon 18M, 3-4 Yard Eliminator Aluminum Dump Body**) and provided by Mr. Ernesto Contreras with Golden Gate Truck, each for:

	Contract Price
Subtotal	\$ 223,162.00
Tax (9.625%)	\$ 21,479.34
Est. Licensing & Doc Fees	\$ 2,246.00
CA Tire Fee	\$ 10.50
Total	\$ 246,897.84

This sourced item(s) is available under the Sourcewell (Formerly Known as NJPA) Contract 032824-NAF. Please reference this Contract Number on all Purchase Orders.

Thank you in advance for your consideration. Should you have any questions, please do not hesitate to call.

Sincerely,

Ben Rodriguez

HD Contract Manager

BEN@NationalAutoFleetGroup.com

Office (855) 289-6572

Fax (831) 480-8497



Western Truck Fabrication, Inc
 1923 W Winton Ave
 Hayward, CA 94545-1205
 5107859994
 www.westerntruckfab.com



ACCOUNTING

ADDRESS

GOLDEN GATE TRUCK
 CENTER
 8200 BALDWIN ST
 OAKLAND, CA 94621

ACCOUNTING # 86156

DATE 11/26/2025

SHIP DATE	TRACKING NO.	END USER PHONE	WTF REP	DEALER SALES REP
11/21/2025	ERNIE	707-365-9005	EDGAR	ERNIE (CITY OF BURLINGAME)

ACTIVITY	QTY	DESCRIPTION	RATE	AMOUNT
Truck Details	1	YEAR/MAKE: 2025 RIZON MODEL: E18M - EV WB: *** VERIFY *** CA: *** VERIFY *** CAB TYPE: TILT CAB EV	0.00	0.00
MATERIALS DB	1	FURNISH & INSTALL ONE (1) RUGBY 3-4 YARD ELIMINATOR ALUMINUM DUMP BODY TO INCLUDE 11'-7" LONG, 96" OD WIDTH, 12" SIDE HEIGHT , 18" TAIL GATE HEIGHT (STRAIGHT TAILGATE) 3/16" 5052 ALUMINUM SIDES AND ENDS 3/16" 5052 ALUMINUM FLOOR 1/4" 5052 ALUMINUM FORMED CHANNEL LONGITUDINAL 3" I BEAM 6061 ALUMINUM CROSSMEMBERS INTERLACED CONSTRUCTION STRAIGHT BULKHEAD WITH 1/4 CAB SHIELD FOLD DOWN SIDES WITH CENTRALLY LOCATED QUICK RELEASE LEVER EZ-LATCH TAILGATE *** NO GATES ON TAILGATE *** 6" SPREADER APRON RUGBY SR 4016 ED 12 VDC ELECTRIC HOIST DOUBLE ACTING HOIST DUMP SAFETY PACKAGE CHASSIS LIGHTS LED LIGHTING ON DUMP *** DUMP REAR CORNER POSTS - BUYERS 6" COMBO LED S/T/T - BACK-UP - & STROBE LIGHT WITH 32 LEDS (AMBER) - TO FLASH WITH WHELEN TSS0A (SEE BELOW) ***	26,918.00	26,918.00T

ACTIVITY	QTY	DESCRIPTION	RATE	AMOUNT
		*** BODY AND HOIST WEIGHT 1,600 LBS ***		
EC-AUXBATT-1	1	ONE (1) GROUP 31 DEEP CYCLE AUXILIARY BATTERY KIT ISOLATED CIRCUIT TO TRUCK'S CHARGING SYSTEM 150 AMP CIRCUIT BREAKER *** APPROXIMATE WEIGHT 100 LBS ***	2,300.00	2,300.00T
MATERIALS DB	1	FURNISH & INSTALL BUYERS 24"W x 24"H x 86"L ALUMINUM TUNNEL BOX MOUNTED BEHIND CAB, *** RAISE BOX ABOUT 6" FROM FRAME OF TRUCK FOR SPACE UNDERNEATH BOX ENDS FOR PULLOUT STEPS *** ONE SWING DOOR PER SIDE, FULL THROUGH BOX ALUMINUM FINISH *** BOX WEIGHT 250 LBS ***	5,140.00	5,140.00T
MATERIALS DB	1	FABRICATE & INSTALL OPEN TOP PERFORATED BAKSET ON TOP OF TUNNEL BOX *** SAME SIZE AS TUNNEL BOX SURFACE - 24" x 86" AT 12" TALL *** ALUMNUM DIAMOND PLATE PANELS *** BAKSET WEIGHT 100 LBS ***	1,450.00	1,450.00T
DB-STEP-PULL2	2	REINFORCE TUNNEL BOX AS NEEDED FOR SIDE STEPS FURNISH & INSTALL (2) PULL-OUT 2-RUNG BODY STEPS W/ GRAB HANDLE ONE EACH SIDE, UNDERNEATH TUNNEL BOX *** VERIFY LOCATION OF HANDLES *** *** VERIFY 6" RISE ON TUNNEL BOX WILL GIVE ENOUGH CLEARANCE *** *** APPROXIMATE WEIGHT 150 LBS ***	1,068.00	2,136.00T
DB-PULLTARP-M	1	FURNISH & INSTALL BUYERS MANUAL SPRING RETURN TARP SYSTEM: *** BLACK MESH TARP *** SIDE GROMMETS ON APPROXIMATE 36" CENTERS INSTALL TARP AS HIGH AS POSSIBLE ON CAB SHEILD *** APPROXIMATE WEIGHT 100 LBS ***	2,500.00	2,500.00
MATERIALS DB	1	FURNISH & INSTALL (4) WHELEN TSS0A T-SERIES AMBER LED LIGHthead, SURFACE MOUNTED AMBER LED FLASHERS, MOUNT (2) FRONT GRILL OF TRUCK MOUNT (2) ONTO DUMP BODY FRONT CORNER POSTS FACING SIDES (MOUNT VERTICAL) WIRE WITH TH BUYERS TAILLIGHT COMBO FLASHING LIGHT TO FLASH TOGETHER INSTALL CAB MOUNTED, ENGRAVED LABEL	1,560.00	1,560.00T
EC-WHL31HAFCA	1	FURNISH & INSTALL WHELEN MODEL L31HAFCA AMBER LED STROBE LIGHT *** CALIFORNIA TITLE 13 *** MOUNTED ON CAB SHIELD - TO BE VISIBLE ABOVE TARP	1,640.00	1,640.00T
MATERIALS DB	1	FURNISH & INSTALL (6) ROPE HOOKS ON DUMP SIDES, 3 EACH SIDE, BOLTED ON	365.00	365.00T
WEIGHT CERT	1	WEIGHT CERTIFICATION	200.00	200.00T

ACTIVITY	QTY	DESCRIPTION	RATE	AMOUNT
		CHASSIS GVW 17,995 LBS		0.00
		CHASSIS WEIGHT	7,500	
		LBS		
		BODY AND COMPONENT ESTIMATED WEIGHTS	2,400	
		LBS		
		ESTIMATED PAYLOAD 8,000 LBS		

FOR CITY OF BURLINGAME - ANTHONY - 650-558-7685 -
 amartin@burlingame.org

SUBTOTAL 44,209.00
 TAX 0.00
TOTAL \$44,209.00

Accepted By

Accepted Date



ZERO EMISSIONS. ALL BUSINESS.



RIZON

A Daimler Truck Brand



It is time.

The world is evolving. Because it must.
Not minor changes. Not little adjustments.
The time has come for something more ambitious.
A complete commitment by a significant force capable
of doing something genuinely lasting and making the
necessary change practical.

The Daimler Truck Group introduces RIZON. A new OEM
brand totally committed to zero emissions commercial
vehicles. Based on proven technology, it is clear this is not
an experiment. This is a truck.

This is your next truck.

125+

YEARS OF EXPERTISE
in truck manufacturing

5M+

REAL-WORLD MILES
EV experience



EMISSIONS BRAND
from a global OEM



No noise, no fumes, all efficiency.

This is the RIZON family – the most practical decision you can make in a commercial vehicle.

Electric power means silent and smooth propulsion, less vibration and less overall noise. Easy to drive. Easy to maintain. Easy to own.

Flexible to accept a variety of bodies and charging options. Backed by the Daimler Truck Group for peace of mind – quality, innovation, engineering, financing, expert dealers and commercial-grade services. RIZON makes it easy to go electric.

Six models.
Countless possibilities.

R16M

R16L

R18M

R18Mx

R18L

R18Lx





ZERO EMISSIONS



100% ELECTRIC



INNOVATIVE
POWERTRAIN





Easy access to inner peace.

RIZON trucks' modern interior was designed to keep drivers comfortable so they can stay focused on the job at hand.

The serene experience in a RIZON truck extends beyond its ergonomic layout, with comforting features such as a heated driver's seat, steering wheel and windshield. We've created a modern environment with the latest technology.



1. DRIVE CONTROLS

Integrated steering wheel controls link to audio and phone system and the 7-inch digital instrument cluster.



2. MULTIFUNCTION DISPLAY

Touchscreen navigation and seamless Bluetooth®-compatible phone and audio system integration.



3. HEATED FEATURES

Optimizes driver comfort with soothing heat in driver's seat, the steering wheel and windshield.



4. CUPHOLDERS

Two conveniently placed cupholders for easy accessibility and driver comfort.



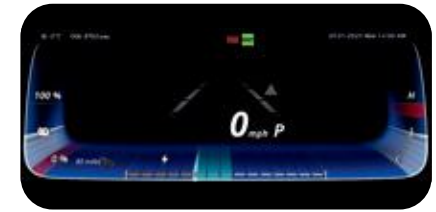
5. PARKING LOCK

Set the parking brake and lock the gearbox with the push of a button.



6. POWERTRAIN CONTROL

Conveniently located dashboard lever controls both gear selection and selection of regenerative braking force.



7. FULLY DIGITAL INSTRUMENT CLUSTER

In-Plane Switching (IPS) panel shows the speedometer, energy level, power consumption history, inspection schedule and vehicle settings.



8. ISRI® SEAT

Suspended driver seat is heated and ergonomically designed for optimal driver comfort, with folding inboard armrest and lumbar support.



9. KEYLESS START

Convenient keyless start and remote door lock/unlock function with the smart keyfob.



A clean slate for a cleaner world.

The RIZON truck chassis is thoughtfully engineered. Suitable for a variety of body configurations and applications, the RIZON truck can meet the specific demands of your business and the electric truck market.

The chassis features a clean back-of-cab for efficient body integration by Truck Equipment Manufacturers (TEMs). And the all-electric motor generates impressive torque, making driving effortless and efficient.

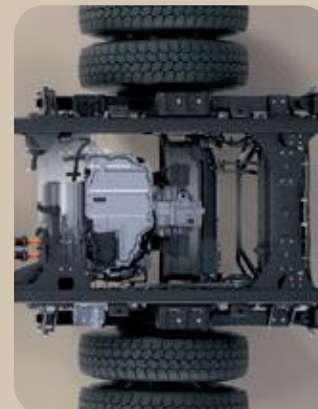


1. POWERFUL BATTERY PACKS

Multiple battery pack configurations to tailor the power and torque for the job or application.

2. CLEAN BACK-OF-CAB

The chassis features a clean back-of-cab for efficient body integration.



3. 100% ELECTRIC eAXLE

eAxle features a simple and innovative design combining electric motor, gearbox and axle in one.

129 kW



Variable body configurations.

The RIZON truck chassis has a flexible design adaptable to a variety of body configurations. The truck can be equipped with an ePTO unit to provide power for TEM-installed equipment.



DRY VAN



REFRIGERATED



STAKE SIDE



FLATBED



DUMP

4. FRAME RAILS

Frame rail options allow for 175" and 187" wheelbase lengths addressing specific job specifications.

5. TIGHT TURN RADIUS

Superior tight turning radius for enhanced maneuverability in any environment.

6. SUPERIOR VISIBILITY

A wide, cab-forward design for excellent visibility and increased safety.

7. AC/DC CHARGING SOCKET

All vehicles offer both AC charging with a J1772 connector and DC charging with CCS1 port standard.

8. LITHIUM IRON PHOSPHATE BATTERIES (LFP)

Advanced LFP battery chemistry for a longer lasting and safer battery than other options.

9. SMOOTH SUSPENSION

Two-stage rear leaf spring suspension for increased ride comfort and front and rear stabilizer bars for improved handling.

10. REGENERATIVE BRAKING

Four levels of regenerative braking for driver control and energy efficiency to extend range and reduce brake wear.

11. SMART HEADLIGHTS

Daytime running lamps (DRL) and long-lasting, auto-dimming LED headlights and taillights for strong visibility.

12. ELECTRIC POWER TAKEOFF (ePTO)

Optional ePTO uses electricity to power the truck's accessory equipment.



A safe space, inside and out.

RIZON trucks incorporate commercial-grade advanced passive and active safety systems. Drive with peace of mind knowing Active Brake Assist with Moving Pedestrian Detection, Lane Departure Warning, Active Side Assist, Electronic Stability Control and Anti-lock Braking System come standard with a RIZON truck.

LANE DEPARTURE WARNING (LDW)

The system enhances safe operation and road awareness by utilizing cameras to detect painted lines on the road and monitoring if the RIZON vehicle drifts into another lane and prompts the driver to readjust.





ACTIVE SIDE ASSIST (ASA)

Improve vehicle safety with ASA. By continuously monitoring the passenger's side, ASA keeps an eye on the truck's blind spot to prevent the truck from turning right in the presence of cyclists or pedestrians. If a driver overlooks warning signals at speeds under 12 mph, automatic braking maneuvers begin and bring the truck to a complete stop.



ACTIVE BRAKE ASSIST (ABA)

ABA is a truck's way of always thinking ahead. Designed to mitigate potential collisions, ABA monitors the road and automatically calculates the truck's distance from vehicles ahead to determine if a warning or braking action is needed. ABA can apply full and partial braking on moving vehicles, stationary vehicles and moving pedestrians.



ANTI-LOCK BRAKING SYSTEM (ABS)

ABS and Electronic Brake Distribution contribute to better traction and overall stability of the truck for enhanced safety.



ELECTRONIC PARK LOCK (EPL)

Prevent rollaways with the automatic park lock, which sets the parking brake and locks the gearbox with the push of a button.



REVERSE VIEW CAMERA SYSTEM

Factory installed reverse camera with in-cab color monitor helps the driver see behind the vehicle when reversing.



ELECTRONIC STABILITY CONTROL (ESC)

Supports the driver in nearly all critical driving situations by detecting vehicle skidding movements and actively counteracts to prevent rollover.

Active safety systems are intended to assist the driver and are not a replacement for safe, attentive driving. Please consult with your dealer for complete information.



Power comes from within.

Each high-performance lithium iron phosphate battery pack has a capacity of 41 kWh and RIZON models are powered with either two or three battery packs. This gives the L-size RIZON trucks a range up to 160 miles and the M-size up to 110 miles.

RIZON trucks are also capable of being charged by two types of battery charging systems: Level 2 AC Charging or Level 3 DC Fast Charging compliant with CCS1 protocol.



@16M Battery packs: 2
Installed/Usable energy: 82 kWh/74 kWh
Possible range: 75 ↔ 110 miles*
GVWR: 15,995 lbs

@16L Battery packs: 3
Installed/Usable energy: 124 kWh/116 kWh
Possible range: 115 ↔ 160 miles*
GVWR: 15,995 lbs

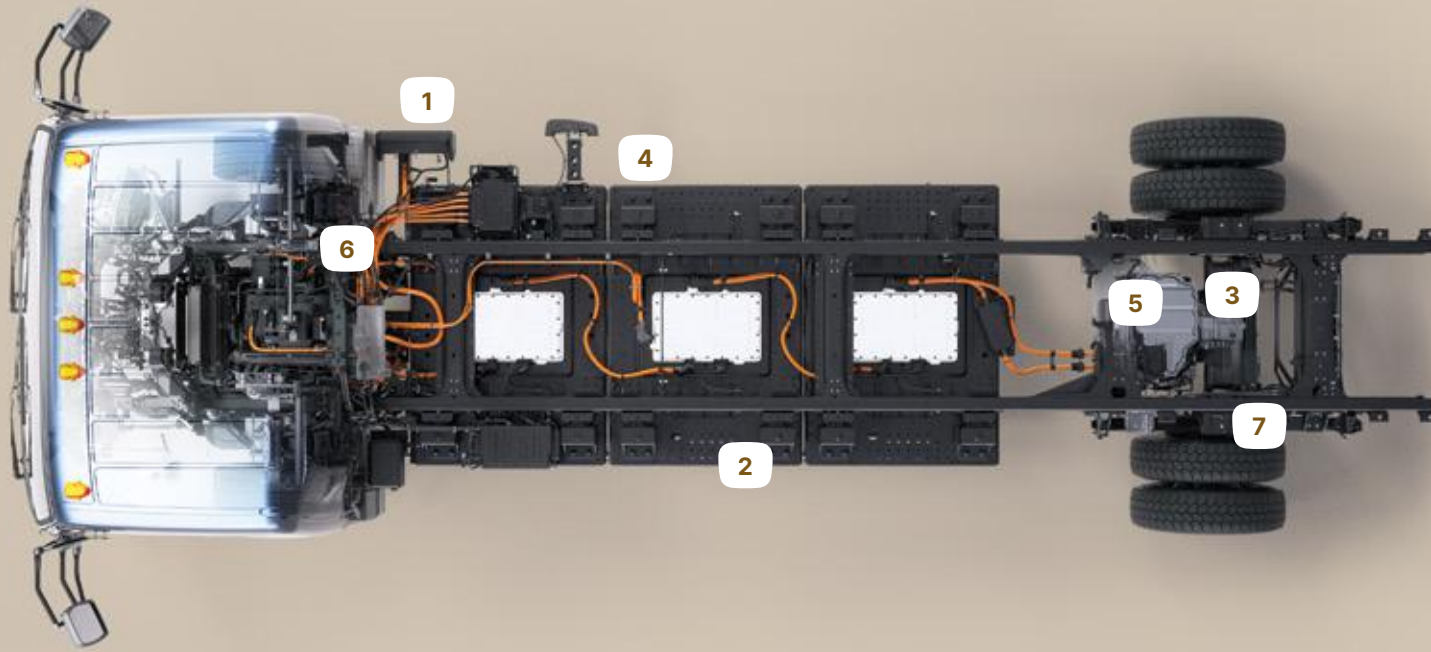
@18M Battery packs: 2
Installed/Usable energy: 82 kWh/74 kWh
Possible range: 70 ↔ 105 miles*
GVWR: 17,995 lbs

@18Mx Battery packs: 2
Installed/Usable energy: 82 kWh/74 kWh
Possible range: 70 ↔ 105 miles*
GVWR: 18,800 lbs

@18L Battery packs: 3
Installed/Usable energy: 124 kWh/116 kWh
Possible range: 110 ↔ 155 miles*
GVWR: 17,995 lbs

@18Lx Battery packs: 3
Installed/Usable energy: 124 kWh/116 kWh
Possible range: 110 ↔ 155 miles*
GVWR: 18,800 lbs

**Mileage claims based on standard testing conditions with 50% payload. The range may vary based on environment conditions, battery health/charge level, recuperation usage, road traffic/profile, accessories usage, speed of operation and driving style.*



Convenient charging via AC and DC connections.

Charging RIZON vehicles is simple. Whether at a business, a public charging station or anywhere within the growing network of charging options, RIZON vehicles have charging capabilities that seamlessly fit into any schedule.



LEVEL 2 AC CHARGING

Charge time: 6–9 hours

An AC charger can be used when a longer charging time is available, such as at the end of shift or overnight. Typical AC chargers will recharge the vehicle in 6–9 hours from empty.



DC FAST CHARGING

Charge time: 1–1.5 hours

All RIZON models support DC charging (up to 104 kW), providing quick charging options for vehicle use when there's less charging time available. Using the CCS1 charge port, the RIZON vehicle can be recharged to full battery capacity in 1–1.5 hrs.

STATE OF THE ART

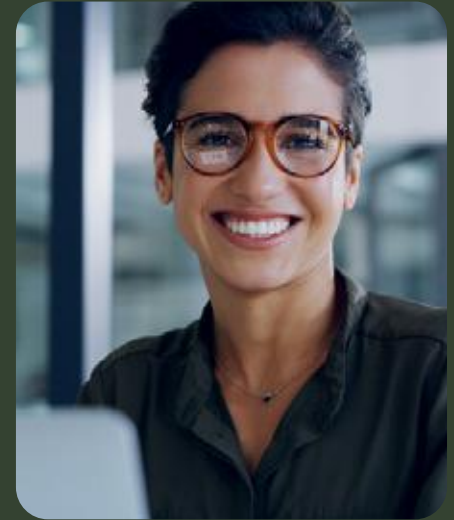
Every element of design has been carefully considered and engineered for efficiency. The result is a compact drivetrain, modular battery configuration and simple, intuitive chassis that raise the bar on what an electric medium-duty truck can do.

1. AC/DC charging socket
2. High-voltage batteries
3. eAxle
4. High-voltage power cutoff
5. Inverter
6. ePTO
7. Regenerative braking



All the support you need, in one intelligent network.

As a part of the Daimler Truck global family, RIZON offers unparalleled support and an extensive network of access to well-prepared dealers. Daimler Truck has been around for over 125 years. RIZON vehicles are built to last for every job today and tomorrow. So you can breathe easy knowing we have your back through it all.



WARRANTY

Enjoy peace of mind, mile after mile, with RIZON's class-leading electric vehicle warranty that covers the cab, chassis, and electric powertrain (electric drive motor and gearbox).



FINANCING

Being part of the Daimler Truck Financial family means we can get you into the right truck at the right price with rates that are competitive with anyone, including banks. Plus, because we know not only the transportation and vocational businesses, but the electric vehicle financing environment as well, it's simple to get the financing you need – and into the RIZON vehicle you want.



SERVICE AND SUPPORT

When you choose RIZON, you get more than a truck. You get the backing of an experienced commercial vehicle dealer network. Whether you need repairs or parts or just have a question about your truck, they're committed to keeping you up and running.



RIZONCONNECT®

Our RIZONCONNECT service allows vehicle owners to access information about their vehicles through an online customer portal in real time. With analytics showing vehicle health, diagnostic codes, driver behavior, and safety events, Truckconnect helps improve energy efficiency, reliability and driver productivity. With these smart features, vehicle owners can stay on top of their fleet's performance and make informed decisions to improve operations and reduce costs.

MODEL	®16M	®16L	®18M
POWERTRAIN			
Motor	All-electric eAxle with integrated permanent magnet synchronous motor and gearbox	All-electric eAxle with integrated permanent magnet synchronous motor and gearbox	All-electric eAxle with integrated permanent magnet synchronous motor and gearbox
Peak Output	175hp/129 kW peak	175hp/129 kW peak	175hp/129 kW peak
Max Torque	317ft-lb/430NM	317ft-lb/430NM	317ft-lb/430NM
Speed	64 mph	64 mph	64 mph
BATTERY			
Size/Modules	M-Size, 2 lithium iron phosphate, liquid-cooled batteries	L-Size, 3 lithium iron phosphate, liquid-cooled batteries	M-Size, 2 lithium iron phosphate, liquid-cooled batteries
Range	75-110 miles	115-160 miles	70-105 miles
Gradability	20% with max. torque	20% with max. torque	20% with max. torque
Charging Max. Charge Power	Level 2 AC Charging Level 3 DC Charging	Level 2 AC Charging Level 3 DC Charging	Level 2 AC Charging Level 3 DC Charging
Charge Time AC (19.2 kW)	Approx 6 hours	Approx 9 hours	Approx 6 hours
Charge Time DC (104 kW)	Approx 1 hour	Approx 1.5 hours	Approx 1 hour
DIMENSIONS			
Height/Width	91.3"/84.8"	91.3"/84.8"	91.3"/84.8"
Wheelbase	134", 152", 175" or 187"	175" or 187"	134", 152", 175" or 187"
WEIGHT			
Chassis Weight	Approx. 7,500 lbs.	Approx. 8,600 lbs.	Approx. 7,500 lbs.
GVWR	15,995 lbs.	15,995 lbs.	17,995 lbs.
BRAKES			
Brake Type	Hydraulic with air assistance	Hydraulic with air assistance	Hydraulic with air assistance
SAFETY			
Standard Features	Active Side Assist, Active Brake Assist, Lane Departure Warning, Anti-lock Braking System, Electronic Brake Distribution, Electronic Stability Control, Reverse View Camera System, Electronic Park Lock	Active Side Assist, Active Brake Assist, Lane Departure Warning, Anti-lock Braking System, Electronic Brake Distribution, Electronic Stability Control, Reverse View Camera System, Electronic Park Lock	Active Side Assist, Active Brake Assist, Lane Departure Warning, Anti-lock Braking System, Electronic Brake Distribution, Electronic Stability Control, Reverse View Camera System, Electronic Park Lock

Specifications are subject to change. Actual vehicle may vary by market. At max GVWR and depending on operating conditions, range may vary.

MODEL	e18Mx	e18L	e18Lx
POWERTRAIN			
Motor	All-electric eAxle with integrated permanent magnet synchronous motor and gearbox	All-electric eAxle with integrated permanent magnet synchronous motor and gearbox	All-electric eAxle with integrated permanent magnet synchronous motor and gearbox
Peak Output	175hp/129 kW peak	175hp/129 kW peak	175hp/129 kW peak
Max Torque	317ft-lb/430NM	317ft-lb/430NM	317ft-lb/430NM
Speed	64 mph	64 mph	64 mph
BATTERY			
Size/Modules	M-Size, 2 lithium iron phosphate, liquid-cooled batteries	L-Size, 3 lithium iron phosphate, liquid-cooled batteries	L-Size, 3 lithium iron phosphate, liquid-cooled batteries
Range	70-105 miles	110-155 miles	110-155 miles
Gradability	20% with max. torque	20% with max. torque	20% with max. torque
Charging Max. Charge Power	Level 2 AC Charging Level 3 DC Charging	Level 2 AC Charging Level 3 DC Charging	Level 2 AC Charging Level 3 DC Charging
Charge Time AC (19.2 kW)	Approx 6 hours	Approx 9 hours	Approx 9 hours
Charge Time DC (104 kW)	Approx 1 hour	Approx 1.5 hours	Approx 1.5 hours
DIMENSIONS			
Height/Width	91.3"/84.8"	91.3"/84.8"	91.3"/84.8"
Wheelbase	134", 152", 175" or 187"	175" or 187"	175" or 187"
WEIGHT			
Chassis Weight	Approx. 7,500 lbs.	Approx. 8,600 lbs.	Approx. 8,600 lbs.
GVWR	18,800 lbs.	17,995 lbs.	18,800 lbs.
BRAKES			
Brake Type	Hydraulic with air assistance	Hydraulic with air assistance	Hydraulic with air assistance
SAFETY			
Standard Features	Active Side Assist, Active Brake Assist, Lane Departure Warning, Anti-lock Braking System, Electronic Brake Distribution, Electronic Stability Control, Reverse View Camera System, Electronic Park Lock	Active Side Assist, Active Brake Assist, Lane Departure Warning, Anti-lock Braking System, Electronic Brake Distribution, Electronic Stability Control, Reverse View Camera System, Electronic Park Lock	Active Side Assist, Active Brake Assist, Lane Departure Warning, Anti-lock Braking System, Electronic Brake Distribution, Electronic Stability Control, Reverse View Camera System, Electronic Park Lock

Specifications are subject to change. Actual vehicle may vary by market. At max GVWR and depending on operating conditions, range may vary.



RIZON

For more information visit:

[RIZONTRUCK.COM](https://rizontruck.com)

To order a truck or learn more
about RIZON, contact
rizonales@daimlertruck.com

RIZON - A Daimler Truck Brand

RTC4A0E23D All trademarks, logos and brand names are the property of their respective owners.
All company, product and service names used in this website are for identification purposes only.

Specifications are subject to change without notice. Copyright © 2023. All rights reserved.
RIZON trademarks are exclusive property of Mitsubishi Fuso Truck & Bus Corporation, Japan.



Quoted for: City of Burlingame (CA)
 Altec Account Manager: Michael Russell

REFERENCE ALTEC MODEL	Sourcewell Price
LR856	Overcenter Articulating Aerial Device (Insulated)
	\$211,359

(A.) SOURCEWELL OPTIONS ON CONTRACT (Unit)

1			
2			
3			
4			

(A1.) SOURCEWELL OPTIONS ON CONTRACT (General)

1	FLOOD	Flood Light (Hella #H71030401)	\$1,508
2			
3			
4			
5			
6			
7			
8			
9			
10			
SOURCEWELL OPTIONS TOTAL:			\$212,868

(B.) OPEN MARKET ITEMS (Customer Requested)

1	UNIT	Platform Tilt, Heavy Duty Upper Boom Cylinders, Heavy Duty Rotation Motor	\$13,664
2	UNIT & HYDRAULIC ACC	Long Reach Chainsaw Holder On Upper Boom	\$377
3	BODY	Altec Standard Body ILO Custom Body	-\$4,233
4	BODY & CHASSIS ACC	Cone Holder Underslung Dump Body, Custom Horizontal Storage Box, Pole Saw Holders Installed On Dump Body	\$1,852
5	ELECTRICAL	Amber Strobe Beacons On Uprights of Cab Guard, Directional Light Bar, 7-Way Blade Receptacle	\$3,580
6	FINISHING		\$0
7	CHASSIS	2027 Freightliner M2-106 Plus, 4X2, Cummins B6.7, Hydraulic Brakes	-\$6,738
8	OTHER		\$0
OPEN MARKET OPTIONS TOTAL:			\$8,502

SUB-TOTAL FOR UNIT/BODY/CHASSIS: \$221,370.00
Delivery to Customer: \$11,562.00
Eight Year Altec TLME Extended Warranty: \$14,250.00
Five Year / 150K Miles Chassis Warranty: \$1,880.00
CA Doc/Admin/Tire Fees: \$560.50

TOTAL FOR UNIT/BODY/CHASSIS: \$249,622.50

(C.) ADDITIONAL ITEMS (items are not included in total above)

1			
2			
3			
4			

Pricing valid for 45 days

NOTES

PRICING: Altec will make every effort to honor this quotation, subject to the following provisions. Prices for equipment with production start dates 12 months and beyond are considered budgetary due to potential cost inflation, market volatility, and tariff implications. These prices will be reviewed based on market conditions and confirmed closer to the production date. Quotes and orders with chassis model years beyond the current open order bank are estimates only. Altec's turn-key pricing is subject to change based on chassis pricing received from the OEM. Chassis model year, specifications, and price will be reviewed and confirmed when specific model year information becomes available from the OEM, and any chassis price difference, including adjustments for tariffs, will be passed through to the customer.

PAINT COLOR: White to match chassis, unless otherwise specified

WARRANTY: Standard Altec Warranty for Aerials and Derricks - One (1) year parts warranty One (1) year labor warranty Ninety (90) days

TO ORDER: To order, please contact the Altec Account Manager listed above.

CHASSIS: Per Altec Commercial Standard

DELIVERY: TBD Based on availability, FOB Customer Location

TERMS: Net 30 days

BEST VALUE: Altec boasts the following "Best Value" features: Altec ISO Grip Controls for Extra Protection, Only Lifetime Warranty on Structural Components in Industry, Largest Service Network in Industry (Domestic and Overseas), Altec SENTRY Web/CD Based Training, Dedicated/Direct Gov't Sales Manager, In-Service Training with Every Order.

TRADE-IN: Please ask your Altec Account Manager for more information

April 29, 2026
Our 97th Year

Ship To:

CITY OF BURLINGAME (CA)
1361 N CAROLAN AVE
CITY CORP YARD - STREETS DEPT
BURLINGAME, CA 94010-2401
US

Attn: RICHARD HOLTZ
Phone: 650-7593126
Email: richard@tunitasfarm.com

Bill To:

CITY OF BURLINGAME (CA)
501 PRIMROSE RD
CITY HALL
ATTN: ACCOUNTS PAYABLES
BURLINGAME, CA 94010-3906
United States

Altec Quotation Number: 1863841 - 2
Account Manager: Michael Russell
Technical Sales Rep: Joshua P Wiggins

<u>Item</u>	<u>Description</u>	<u>Qty</u>	<u>Price</u>
	<u>Unit</u>		
1.	ALTEC Model LR8-56 Articulating Overcenter Aerial Device with an insulating lower boom, insulating upper boom and the Altec ISO-Grip insulating system at the boom tip. Installed behind the cab to include the following features:	1	
	A. Ground to Bottom of Platform Height: 56.3 feet (17.1 meters).		
	B. Working Height: 61.3 feet (18.7 meters).		
	C. Maximum reach to edge of platform with Upper Boom Non- overcenter (working position): 41.6 feet (12.7 meters) at platform height of 27 feet (8.2 meters).		
	D. Maximum reach to edge of platform with Upper Boom Overcenter: 44.4 feet (13.5 meters) at platform height of 9.8 feet (3.0 meters).		
	E. Continuous Rotation.		
	F. Lower Boom: Articulation is from 0 to 125 degrees. Insulator provides 15 inches of isolation in the lower boom.		
	G. Insulating Upper Boom: Articulation is from 0 to 270 degrees. The round filament wound fiberglass section provides a minimum of 17 feet (5.18 meters) of isolation.		
	H. Chain and Rod Leveling: Platform automatically maintains level during boom articulation by means of a high strength chain and fiberglass rods in the booms to maintain dielectric integrity. Lifetime system requires no major preventative maintenance. Platform level adjustment is easily accessible from external location on lower pivot.		
	I. Altec Patented walking link system features uniform speed, smooth and continuous articulation and low maintenance operation.		
	J. Maintenance Free Elbow: nitrided to prevent rust, increase hardness and eliminates the need for grease at the elbow.		
	K. Side-by-Side Boom Stow offers low travel height and easy platform access.		
	L. The INSULATING UPPER CONTROL SYSTEM includes a single handle controller incorporating high electrical resistance components that are dielectrically tested to 40 kV AC with no more than 400 microamperes of leakage. The control handle is green in color to differentiate it from other non-tested controllers.		
	M. The INSULATING SECONDARY CONTROL SYSTEM includes control handles		

We Wish To Thank You For Giving Us The Pleasure
And Opportunity of Serving You

UTILITY EQUIPMENT AND BODIES SINCE 1929

<u>Item</u>	<u>Description</u>	<u>Qty</u>	<u>Price</u>
	incorporating high electrical resistance components that are dielectrically tested to 40 kV AC with no more than 400 microamperes of leakage. These control handles are green in color to differentiate it from other non-tested controllers.		
N.	Platform capacity: 400 lbs. (181 kilograms) standard.		
O.	Small Boom Tip Profile.		
P.	Hydraulic system: Open center (full pressure), maximum flow of 6.0 to 6.5 gpm (22.7 to 24.6 lpm), maximum operating pressure of 3,000 psi.		
Q.	Diagnostic pressure test port is located at the lower control station to allow a technician to quickly and easily attach a test gauge to verify system and tool circuit pressure.		
R.	Unit is painted with a powder coat paint process which provides a finish-painted surface that is highly resistant to chipping, scratching, abrasion and corrosion. Paint is electrostatically applied to the inside as well as outside of fabricated parts then high temperature cured prior to assembly ensuring maximum coverage and protection.		
S.	Unit meets or exceeds ANSI 92.2 standards.		
T.	Manuals: Two (2) Operator's and Maintenance/Parts Manuals. One(1) in printed format and one(1) in electronic format available at connect.altec.com		
2.	Manual Upper Boom Stow Securing System with support cradle and tie down strap.	1	
3.	Pedestal	1	
4.	Single 1-Man Platform, 24 x 24 x 39, Side Mount, 90 Degree Rotation, Hydraulic Platform Tilt, Shaft-Mounted Controls	1	
5.	One (1) Platform Step - located on the side of the platform nearest the elbow in the stowed position	1	
6.	Platform Cover - Soft vinyl 24 x 24 inch (610 x 610 mm)	1	
7.	Platform Liner, 24 x 24 x 39 inches (610 x 610 x 991 mm), 50 kV Rating	1	
8.	Hydraulic Tool Circuit at Platform: Two (2) sets of tool couplers for open center tools, one (1) set located on each side of the platform.	1	
9.	Secondary Stowage System: 12 VDC powered motor and pump assembly for temporary operation of the unit in a situation wherein the primary hydraulic source fails. Electric motor is powered by the chassis battery. Control is operated with an air plunger at the platform and a momentary switch located at the lower controls and the outrigger controls. This feature allows the operator to completely stow the booms, platform, and outriggers.	1	
10.	Slip Ring: Required for engine start/stop, secondary stowage system, and throttle control options	1	
11.	Primary A-Frame Outriggers with 5-degree swivel shoe. For installation on a 36 to 40 inch chassis frame height.	1	
A.	Maximum Spread: 140 inches		
B.	Ground Penetration: 7 to 11 inches depending on chassis frame height		
C.	Outrigger/Unit Selector Valve: reduces the potential for inadvertent outrigger movement during machine operation if outrigger controls are bumped		
D.	Outrigger Control Valves: located on the outrigger legs		
E.	Outrigger Interlocks: will not allow the unit to be operated until the outriggers		

We Wish To Thank You For Giving Us The Pleasure
And Opportunity of Serving You

<u>Item</u>	<u>Description</u>	<u>Qty</u>	<u>Price</u>
	have been at least partially deployed		
F.	Outrigger Motion Alarms		
12.	Hydraulic Outrigger Control Valves	1	
13.	Insulating Aerial Device, ANSI Category C, 46kV and Below	1	
14.	No LevelReady System	1	
15.	Heavy Duty Upper Boom Cylinders	1	
16.	Heavy Duty Rotation Motor: Larger displacement motor (8.0 cu in) allows for better operation on slopes.	1	
17.	Bolt On Grab Handle for Turntable	1	
18.	Altec Unit Powder Painted White	1	
<u>Unit & Hydraulic Acc.</u>			
19.	Long Reach Chainsaw Holder	1	
	Details: -Installed on upper boom		
20.	Hydraulic Reservoir, 30 Gallon, Rectangular	1	
21.	Sight Gauge for Hydraulic Reservoir, Remote Mounted	1	
22.	Hydraulic Oil, HVI-22 with Ultraviolet Dye (Standard)	35	
23.	Standard Pump For PTO	1	
24.	Hot shift PTO for automatic transmission	1	
25.	Standard Altec PTO/Transmission Functionality with Park Brake Auto Neutral for Allison Automatic Transmissions: -Once the PTO switch is on, the Parking Brake is engaged, and the transmission is in a near stationary condition (i.e., below 5 mph) the transmission will be forced to neutral, and PTO will engage.	1	
26.	Standard Parking Brake Machine Interlock: Parking (holding) brake must be set before machine is operable.	1	
<u>Body</u>			
27.	Altec Chip Dump Body 14.5 cubic yard capacity, 96 inches wide x 60 inches high x 132 inches long (2438 x 1524 x 3353 mm) with ladder box on curb side of body and single piece tailgate	1	
A.	Structural Channel stringers and floor channel.		
B.	12 gauge minimum floor plate.		
C.	14 gauge minimum sides and front with full length die-formed reinforcing ribs.		
D.	14 gauge roof.		

We Wish To Thank You For Giving Us The Pleasure
And Opportunity of Serving You

UTILITY EQUIPMENT AND BODIES SINCE 1929

<u>Item</u>	<u>Description</u>	<u>Qty</u>	<u>Price</u>
E.	Rear top and sides of body reinforced for lower boom support.		
F.	26-1/2 inches (673 mm) high tailgate, hinged curb side with provision to hold open for dumping.		
G.	12 gauge minimum rear under body skirt panel.		
H.	Class "C" Hydraulic hoist, installed, with 45 degree dump angle and body prop.		
I.	LED lighting package, rubber grommet-mounted, with wiring harness in automotive type loom.		
J.	Two(2) LED strobes mounted in the upper rear corners of the dump body.		
K.	Curb side built-in ladder compartment, 12 inches wide x 25 inches high (305 x 635 mm) with wear pad and internal security chain.		
L.	Pole pruner compartment, 11 inches high (279.4 mm), above ladder compartment with dual shelves and rear locking door. Upper section of rear door opening is open.		
M.	Interior of chip body finished with scratch and corrosion resistant liner		
N.	Underside of chip body undercoated.		
O.	Painted White		
28.	Altec Thru Box tool compartment 48 inches wide x 50 inches high x 96 inches long (1219 x 1270 x 2438 mm) with 26.5 inch (673 mm) deep curb and street side compartments with the following compartmentation	1	
A.	Street side - single compartment with two vertical single doors with door post. Left side has two (2) fixed shelves. Right side has four (4) unequal transverse compartments open to curb side. Compartment bottom has 0.125 inch (3.175 mm) rubber liner partitioned for chainsaw gas can and wedge storage. Security chain for chain saw provided in bottom.		
B.	Curb side - single compartment with two (2) vertical single doors with door post. Left side has four (4) unequal transverse compartments open to street side. All compartments have 0.5-inch (12.7 mm) rubber shelf liners. Top center has two (2) fixed shelves. Top right has six (6) swivel rope hooks (3-0-3).		
C.	Standard features: Rivet door locks. Double acting spring type door holders. Door locks are three point twist with lock cylinders. Finish paint interior compartments the same as exterior. Rain deflectors above all doors. Locking bars installed.		
D.	Automotive undercoating applied to entire underside of body.		
E.	Painted White		
<u>Body and Chassis Accessories</u>			
29.	Set of Safety Chain D-Rings	1	
30.	Rigid Style Pintle Hitch (30,000 LB MGTW with 6,000 LB MVL), 4-Bolt Face Mount, Buyers PH15 (T-60 Style)	1	
31.	Underride Protection	1	
32.	Driveaway Safety Kit	1	
33.	Cab Guard, 140 L, 12 GA Sheet Metal with Non-Skid Surface and Expanded Metal Section at Front, Black Gator Hyde Coating	1	
34.	No Automatic Lower Boom Stow Securing System	1	
35.	Cab Guard Access Ladder	1	

We Wish To Thank You For Giving Us The Pleasure
And Opportunity of Serving You

<u>Item</u>	<u>Description</u>	<u>Qty</u>	<u>Price</u>
36.	Cab Guard Access Stirrup Step(s) with Grab Handle(s) at Curbside Rear of Cab Guard	1	
37.	Platform Rest, Rigid with Rubber Tube, 24 Inch	1	
38.	Wood Outrigger Pad, 19.5 x 19.5 x 1.88 with Fluorescent Orange Steel Band Around The Outer Edges and Chain Handle	2	
39.	Outrigger Pad Holder, 20 L x 20 W x 3.5 H Fits 19.5 x 19.5 x 2.25 and Smaller Pads Bolt-On Bottom, Washout Holes with 3/4 Inch Lip Retainer, Steel	2	
40.	Wheel Chocks Rubber with Metal Hairpin Handle 9.75 L x 7.75 W x 5 H (Pair) (Industry Preferred)	1	
41.	Wheel Chock Holders (Pair), For Installation Under Flatbed Or Dump Body	1	
42.	Mud Flaps with Altec Logo (Pair)	1	
43.	Cone Holder Underslung Below Dump Body Post Style	1	
	Details: -Mounted under rear CS corner of chip dump		
44.	Steel Horizontal Storage Box Option 1	1	
	Details: -Vented storage box, frame mounted -Approximately 31"L X 24"H X 28" Depth -Engineering to determine final dimensions -One (1) drop down door, T handle latch, cable stops -Altec white -Ref pic in TC		
45.	Safety Harness and 4.5 Ft Lanyard (Fits Medium to Xlarge)	1	
46.	Slope Indicator Assembly (Pair) for Machine with Outrigger	1	
47.	Vinyl Manual Pouch for Storage of All Operator and Parts Manuals	1	
48.	Additional Body/Chassis Accessory	4	
	Details: -Pole saw holders installed on SS of chip dump body -Curtis Pac Tool Handlelok Mounting Bracket -Item #: 1004-B PERF ADV -Ref mounting location and part in TC		
<u>Electrical Accessories</u>			
49.	Lights and reflectors in accordance with FMVSS #108 lighting package. (Complete LED, including LED reverse lights)	1	
50.	Strobe Beacon Amber LED with Brush Guard (Standard) (Tecniq #K10-AAAD-1) (Permit May Be Required) (Industry/Stock Preferred)	2	

We Wish To Thank You For Giving Us The Pleasure
And Opportunity of Serving You

UTILITY EQUIPMENT AND BODIES SINCE 1929

<u>Item</u>	<u>Description</u>	<u>Qty</u>	<u>Price</u>
	Details: -One (1) mounted to each front upright of cab guard -Ref pics in TC for mounting location		
51.	4-Corner Strobes, Amber, LED, Two (2) Round Lights In Front Corners Of Cab Guard, Two (2) Round Lights At Rear, Class II (Permit May Be Required)	1	
52.	Strobe Lights Wired Battery Hot	1	
53.	Directional Light Bar Option	1	
	Details: -ECCO model ED3335A directional traffic control light bar -Mounted centered above chip dump opening		
54.	Flood Light, LED, With Aluminum Housing, 4.25 W x 4.25 H, No Switch on the Light (Hella #H71030401) (Industry Preferred)	4	
	Details: -Four (4) lights mounted under cab guard -Two (2) mounted facing the front of the truck on each side -Two (2) mounted facing the sides of the truck on each side -Altec Preferred Location		
55.	Dual Tone Back-Up With Outrigger Motion Alarm	1	
56.	PTO Hour Meter, Digital, With 10 000 Hour Display	1	
57.	Trailer Receptacle, 7-Way (Blade Type) Installed At Rear	1	
58.	Altec Standard Trailer Plug Wiring	1	
59.	Electric Trailer Brake Controller	1	
60.	Altec Modular Panel System (AMPS) - Includes Mounting Panel And Accessory Switches	1	
61.	One Emergency Stop Located at Curbside Ground Level Near the Control Area	1	
62.	Install Chassis (OEM) Supplied Backup Camera In Final Assembly	1	
63.	Install Outrigger Interlock System	1	
64.	Install Secondary Stowage System in Final Assembly	1	
65.	Heavy Duty Secondary Stowage Pump (Supplied By Final Assembly)	1	
66.	Dump Body Out of Stow Indicator Light, Installed in Cab	1	
67.	PTO Indicator Light, Installed In Cab	1	

Finishing Details

68.	Front and Rear Frame Mounted and Under Body Mounted Components (With the Exception of Rust Resistant Components) Will Be Painted Black DEPS 005 DEPS 095	1	
-----	--	---	--

We Wish To Thank You For Giving Us The Pleasure
And Opportunity of Serving You

<u>Item</u>	<u>Description</u>	<u>Qty</u>	<u>Price</u>
	(Includes Non OEM Front Bumpers and Cabguards)		
69.	Powder Coat Unit Altec White	1	
70.	Apply Non-Skid Coating (Black) to All Walking Surfaces DEPS 057	1	
71.	Safety and Instructional Decals English	1	
72.	Vehicle Height Placard Installed In Cab DEPS 002	1	
73.	HVI-22 Hydraulic Oil Placard	1	
74.	Dielectric Test Unit According to ANSI Requirements	1	
75.	Stability Test Unit According to ANSI Requirements	1	
76.	Focus Factory Build	1	
77.	Delivery Of Completed Unit	1	
78.	As Built Electrical and Hydraulic Schematics to be Included In the Manual Pouch (Deps 024)	1	
79.	Completed Test Forms To Be Included In The Manual Pouch: -Stability Test Form -Dielectric Test Form (For Insulated Units)	1	
<u>Chassis</u>			
80.	Altec Supplied Chassis	1	
81.	Chassis	1	
82.	2027 Model Year	1	
83.	Freightliner M2-106 Plus	1	
84.	Dual Rear Wheel	1	
85.	Set Back Axle	1	
86.	4x2	1	
87.	Chassis Cab	1	
88.	Regular Cab	1	
89.	Chassis Color - White	1	
90.	No Air Horn	1	
91.	AM/FM Radio	1	
92.	Cruise Control	1	
93.	Air Conditioning	1	

We Wish To Thank You For Giving Us The Pleasure
And Opportunity of Serving You

UTILITY EQUIPMENT AND BODIES SINCE 1929

<u>Item</u>	<u>Description</u>	<u>Qty</u>	<u>Price</u>
94.	Backup Camera, OEM Supplied	1	
95.	Keyless Entry	1	
96.	Power Door Locks	1	
97.	Power Windows	1	
98.	123 Clear CA (Round To Next Whole Number)	1	
99.	GVWR 25,999 LBS	1	
100.	12,000 LBS Front GAWR	1	
101.	19,000 LBS Rear GAWR	1	
102.	Spring Suspension	1	
103.	Cummins B6.7	1	
104.	Diesel	1	
105.	240 HP Engine Rating	1	
106.	Allison 2500 RDS Automatic Transmission	1	
107.	204-215 Freightliner 50 Gallon Fuel Tank (Left Hand Under Cab)	1	
108.	23U-001, 43X-002 Freightliner 6 Gallon DEF Tank (Under Cab Left Hand)	1	
109.	016-1C3 - Freightliner Horizontal Exhaust (Right-Horizontal-Under Cab-Horizontal)	1	
110.	CARB Clean Idle Certification	1	
111.	EPA Clean Idle Certification	1	
112.	CARB Compliant	1	
113.	No Idle Engine Shut-Down Required	1	
114.	11R22.5 Front Tire	1	
115.	11R22.5 Rear Tire	1	
	Details: -Goodyear G182 RSD		
116.	Air Brakes	1	
	Details: -Hydraulic Brakes ILO Air Brakes		
117.	Park Brake In Rear Wheels	1	
118.	Battery Under Cab Left Hand	1	

We Wish To Thank You For Giving Us The Pleasure
And Opportunity of Serving You

UTILITY EQUIPMENT AND BODIES SINCE 1929

<u>Item</u>	<u>Description</u>	<u>Qty</u>	<u>Price</u>
119.	Freightliner Code 556-1AP- Three Piece 14 Inch Painted Steel Bumper with Collapsible Ends	1	
120.	Freightliner - Clear Frame Rails From Back Of Cab To Front Rear Suspension Bracket (607-001)	1	
121.	Freightliner - Electric Brake Controller Wiring With Combined Stop/Turn Signal Heavy Duty Tail Light Wiring At EOF (296-027)	1	
122.	Freightliner - Radiator (700 Square Inch) for ISB/B6.7 or DD8 (266-100)	1	
123.	Freightliner - Rear Cab Crossmember Flush With Back Of Cab (561-010)	1	
124.	Freightliner DEF Pump Mounting (23Y-001)	1	
125.	Freightliner Engine & Transmission Remote Interface at Powertrain Interface Connector (163-014) (34C-011) (79W-003)	1	
126.	Freightliner Powertrain Interface Connector Between Seats without Cap (48H-012)	1	
127.	Freightliner Accelerator Control (Remote Speeds) (148-073)	1	
128.	Freightliner - Pre-Wire Chassis with No Cab Backwall Pass-Thru (33U-011)	1	
129.	Vinyl Split Bench Seat	1	

Additional Pricing

130.	Standard Altec Warranty: One (1) year parts warranty, one (1) year labor warranty, ninety (90) days warranty for travel charges, limited lifetime structural warranty	1	
131.	Administration Fees	1	
132.	Documentation Fees	1	
133.	State Tire Tax	1	

Miscellaneous

134.	Carb Registered State (California)	1	
------	------------------------------------	---	--

Unit / Body / Chassis Total	232,932.00
Additional Total	560.50
FET Total	0.00
Total	233,492.50

Optional Ext Warranty, Travel, Labor, Material and Expense, 8 Year Total (7 Year Extended), \$14,250.00

We Wish To Thank You For Giving Us The Pleasure
And Opportunity of Serving You

	Category 3	
Optional	Ext Warr, Chassis, 5 Years/150k Miles, Freightliner (M2-106)	\$1,880.00
	Total if optional warranty is included	249,622.50

Altec Industries, Inc.

BY

Joshua P Wiggins

*Pricing in this quote does not include potential cost impacts related to the EPA emission regulations scheduled to take effect in calendar year 2027 for all medium and heavy duty engines. **Chassis OEM's anticipate these regulatory changes may result in additional increases estimated between \$15,000 and \$25,000.**

Notes:

- 1 Altec will make every effort to honor this quotation, subject to the following provisions. Prices for equipment with production start dates 12 months and beyond are budgetary only due to irregular cost inflation and market volatility. These prices will be reviewed based on market conditions and confirmed closer to the production date.

 For a quoted chassis model year beyond the current open order bank, chassis model year, specifications and price should be considered estimates only and subject to change. Chassis model year, specifications and price will be reviewed and confirmed when specific model year information becomes available from the OEM.
- 2 Estimated Delivery: 36 months after receipt of order PROVIDING:
 - A. Customer supplied chassis (if applicable) is received a minimum of sixty (60) days before scheduled delivery.
 - B. Customer approval drawings are returned by requested date.
 - C. Customer supplied accessories are received by date necessary for compliance with scheduled delivery.
 - D. Customer expectations are accurately captured prior to major components being ordered (body, chassis) and line set date. Unexpected additions or changes made after this time or at a customer inspection will delay the delivery of the vehicle.

Estimated Delivery is based on information at time of quote and is subject to change.

Altec reserves the right to change suppliers in order to meet customer delivery requirements, unless specifically identified, by the customer, during the quote and or ordering process.
- 3 This quotation is valid until MAY 22,2026. After this date, please contact Altec Industries, Inc. for a possible extension.
- 4 F.O.B. - #FOB_TERMS#
- 5 Interest charge of 1/2% per month to be added for late payment.
- 6 FINANCING AVAILABLE: Please contact Altec Capital at (888) 408-8148 or email finance@altec.com for more information.

We Wish To Thank You For Giving Us The Pleasure
 And Opportunity of Serving You

UTILITY EQUIPMENT AND BODIES SINCE 1929

7 Price does not reflect any local, state or Federal Excise Taxes (F.E.T). The quote also does not reflect any local title or licensing fees. All appropriate taxes will be added to the final price in accordance with regulations in effect at time of invoicing.

8 Changes made to this order may affect whether or not this vehicle is subject to F.E.T. A review will be made at the time of invoicing and any applicable F.E.T. will be added to the invoice amount.

9 Any payment made by a credit card may be subject to a surcharge fee.

10 Altec Standard Warranty:

One (1) year parts warranty.

One (1) year labor warranty.

Ninety (90) days warranty for travel charges.

Warranty on structural integrity of the following major components is to be warranted for so long as the initial purchaser owns the product: Booms, boom articulation links, hydraulic cylinder structures, outrigger weldments, pedestals, subbases and turntables.

Altec is to supply a self-directed, computer based training (CBT) program. This program will provide basic instruction in the safe operation of this aerial device. This program will also include and explain ANSI and OSHA requirements related to the proper use and operation of this unit.

Altec offers its standard limited warranty with the Altec supplied components which make up the Altec Unit and its installation, but expressly disclaims any and all warranties, liabilities, and responsibilities, including any implied warranties of fitness for a particular purpose and merchantability, for any customer supplied parts

Altec designs and manufactures to applicable Federal Motor Vehicle Safety and DOT standards

11 Altec Extended Warranty Option:

An Altec Extended Warranty is an extension of Altec's Limited Warranty and protects you from the repair cost associated with defects of materials and workmanship after the standard Limited Warranty expires.

Altec offers many types of coverages and coverage packages. Ask your Altec account manager for details. Quotes are available upon request.

12 After the initial warranty period, Altec Industries, Inc. offers mobile service units, in-shop service and same day parts shipments on most parts from service locations nationwide at an additional competitive labor and parts rate. Call 877-GO-ALTEC for all of your Parts and Service needs.

13 Trade-in offer is conditional upon equipment being maintained to DOT (Department of Transportation) operating and safety standards and remaining in compliance of DOT until arrival at an Altec Facility. This will include, but is not limited to engine, tires, lights, brakes, glass, etc. All equipment, i.e., jibs, winches, pintle hooks, trailer connectors, etc., are to remain with unit unless otherwise agreed upon in writing by both parties. ALTEC Industries reserves the right to re-negotiate its trade-in offer if these conditions are not met.

All reasonable and necessary expenses required of ALTEC Industries to execute transportation of the trade-in will be invoiced to the customer for payment if these conditions are not met to maintain DOT standards.

Customer may exercise the option to rescind this agreement in writing within sixty (60) days after receipt of purchase order. After that time ALTEC Industries will expect receipt of trade-in vehicle upon delivery of new equipment as part of the terms of the purchase order unless other arrangements have been made.

14 The final fully loaded weight of the truck and structural ratings of the hitch assembly may reduce the towing capacity and the vertical load capacity of the finished truck. These capacities may not match the ratings of the chassis or hitch.

15 Altec takes pride in offering solutions that provide a safer work environment for our customers. In an effort to focus on safety, we would encourage you to consider the following items:

- Outrigger pads (When Applicable)
- Fall Protection System
- Fire extinguisher/DOT kit
- Platform Liner (When Applicable)
- Altec Sentry Training
- Wheel Chocks

The aforementioned equipment can be offered in our new equipment quotations. If you find that any of these items have not been listed as priced options with an item number in the body of your quotation and are required by your company, we would encourage you to contact your Altec Account Manager and have an updated quote version sent to you. These options must be listed with an item number in the quotation for them to be supplied by Altec.

16 Altec values your data privacy. The Altec Family of Companies (including Altec, Inc., and its subsidiaries) may collect telematics data from the equipment you own. Please review Altec's Equipment Data Privacy Notice on www.altec.com for more information. By purchasing equipment from Altec, you consent to Altec's right to collect and use such data.

17 **RECOMMENDED OPTIONS AND ACCESSORIES:** These options are not included in the quote total price. Selected options will change the quote total. Any options added after initial order will be re-quoted.