



1

Meeting Goals

- Present the TSPC an request to increase the amount of long-term parking in the Broadway Downtown
- TSPC to obtain community feedback
- Obtain a TSPC motion of support for a staff proposed option.

2

Background

Late last year Engineering staff received a request from a business owner in the Broadway Downtown about increasing the amount of long-term parking in the area.

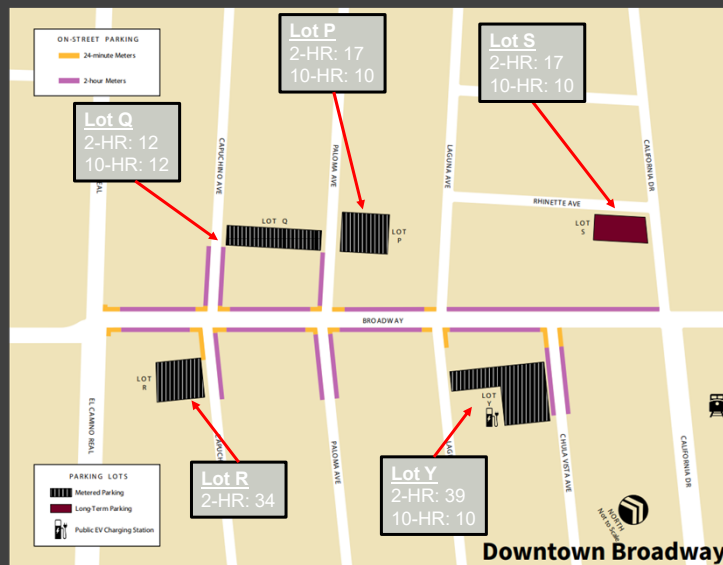
Staff completed a survey for all five parking lots in the Downtown during the enforcement hours (8:00 AM to 6:00 PM)

When reviewing the survey data, typical “capacity” is reached when 85% of the available parking is full. This approach implies that driver’s seeking parking would not immediately find parking but would have to drive around to locate an available space.

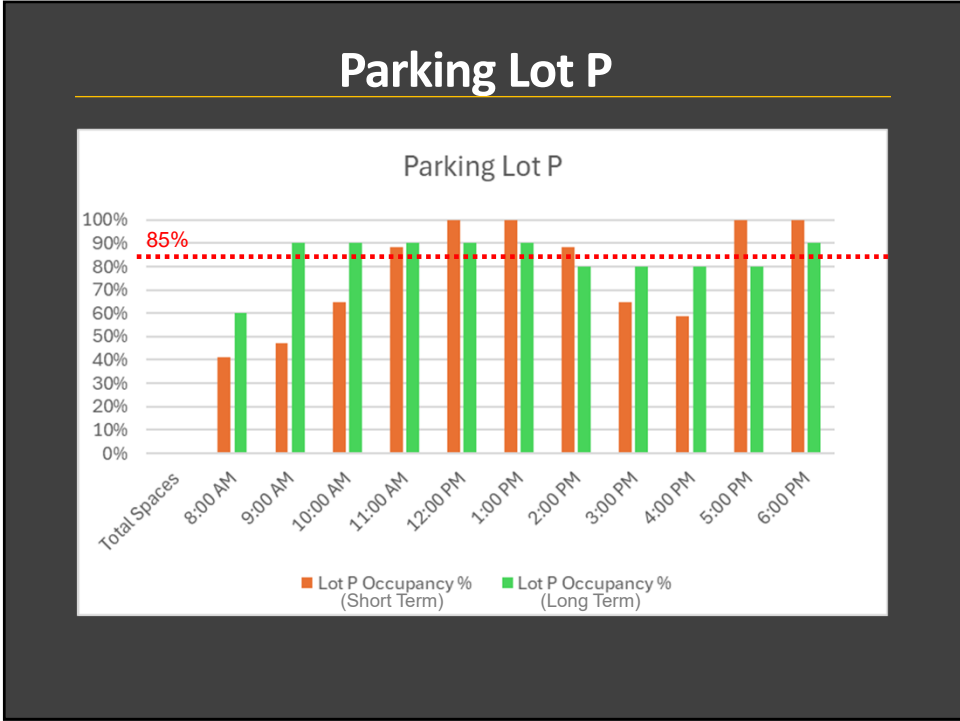
Lastly, there is a potential opportunity to address the queuing issues along southbound California Drive (Rhinette to Jaunita).

3

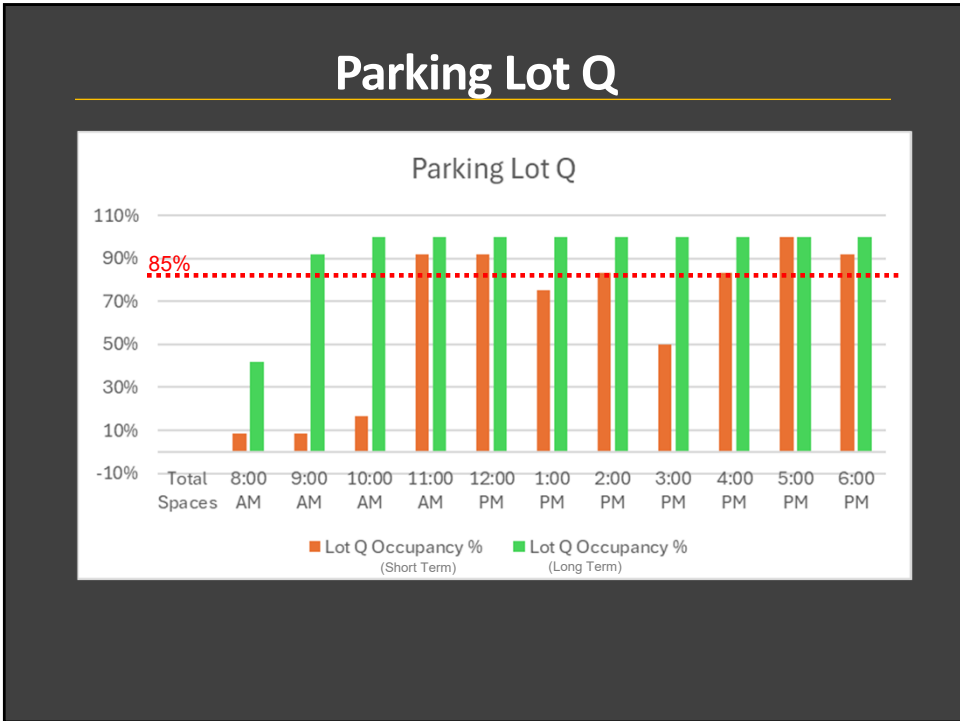
Project Location



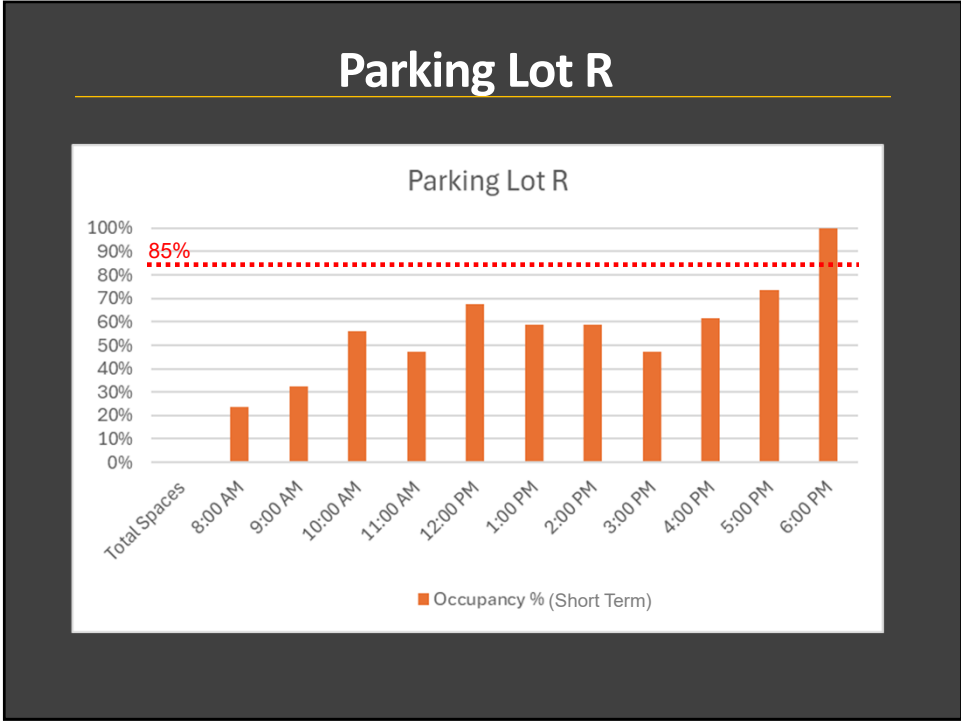
4



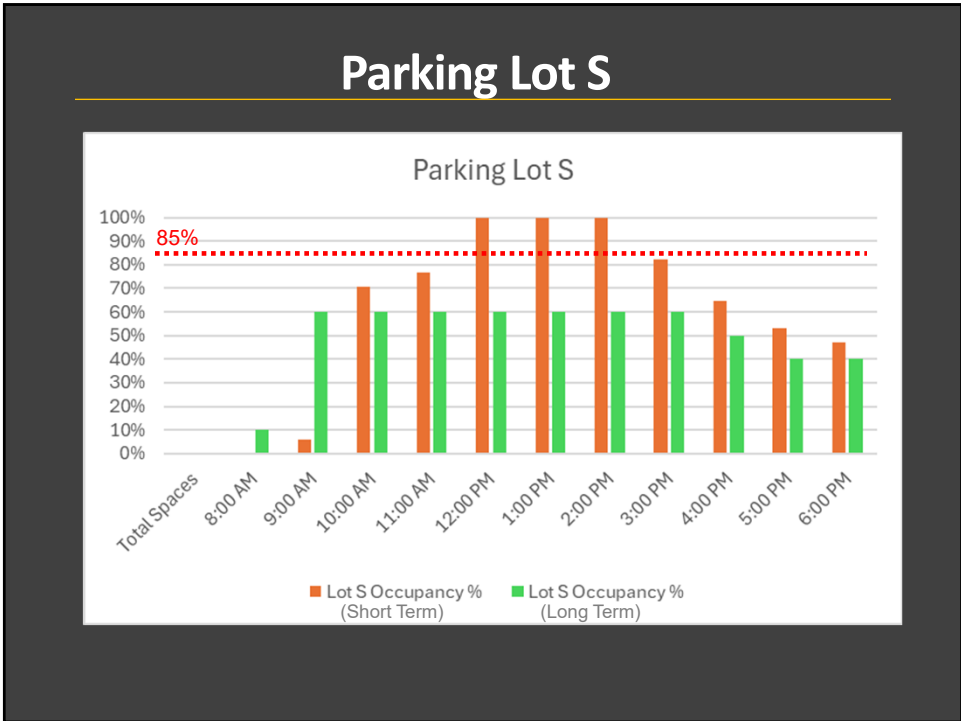
5



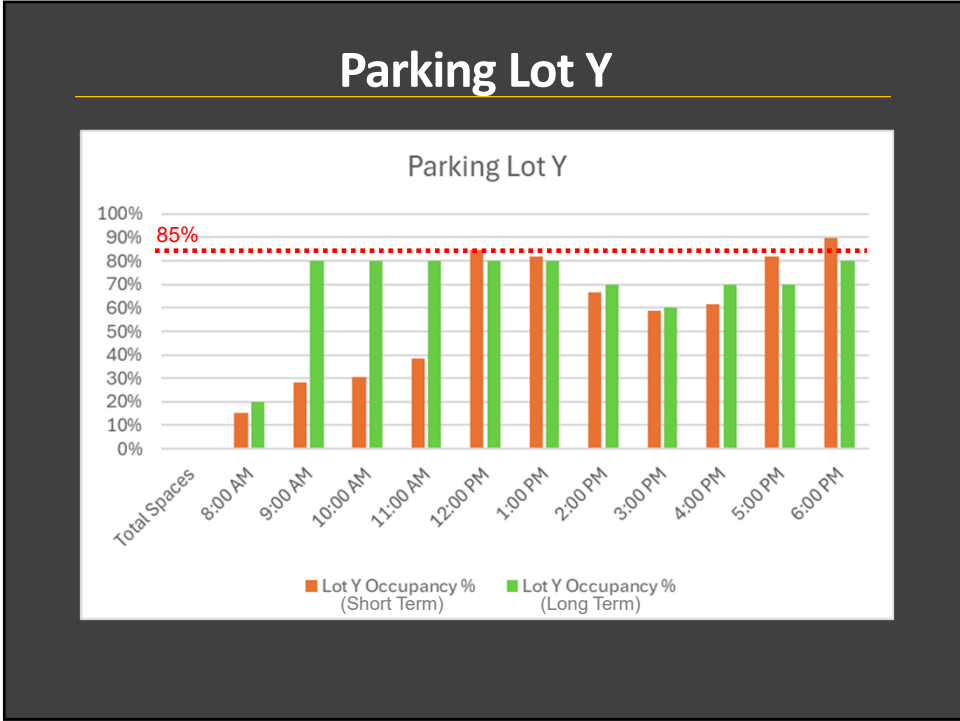
6



7




8



9

Staff Feedback

- Parking usage begins increasing after 5:00 PM residents in multi-family buildings return from work and can parking in all City lots overnight.
- Long-term parking in the Broadway Downtown reaches maximum capacity after 10 AM
- Lot R appears to have lower usage and higher turnover due to adjacent uses. Post Office typically has high turnover parking and Chase Bank has its own private parking lot for customers.



Courtesy of the City of San Mateo

10

Proposed Option

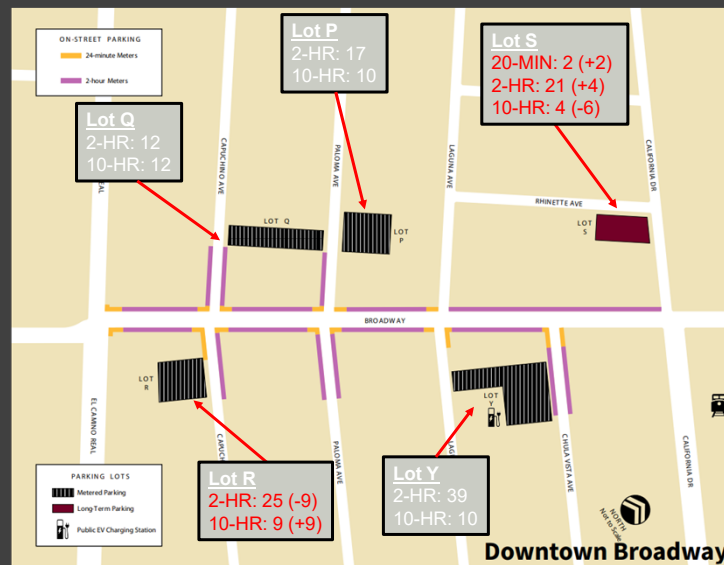
- Staff proposes to convert a portion of the 2-hour parking spaces in Lot R to 10-hours space.
 - Lot R is underutilized with capacity to convert spaces
 - Short-term parking has a peak usage of 68% during the prime hours
- Potential opportunity to address throughput issue along southbound California by mitigating the potential loss of 6 on-parking spaces along California Drive (RhINETTE to Juanita), convert 6 spaces in Lot S to durations consistent with the businesses along this stretch of California Drive



Courtesy of the City of San Mateo

11

Revised Parking Option (Example)



12

Revised Parking Option (Example)

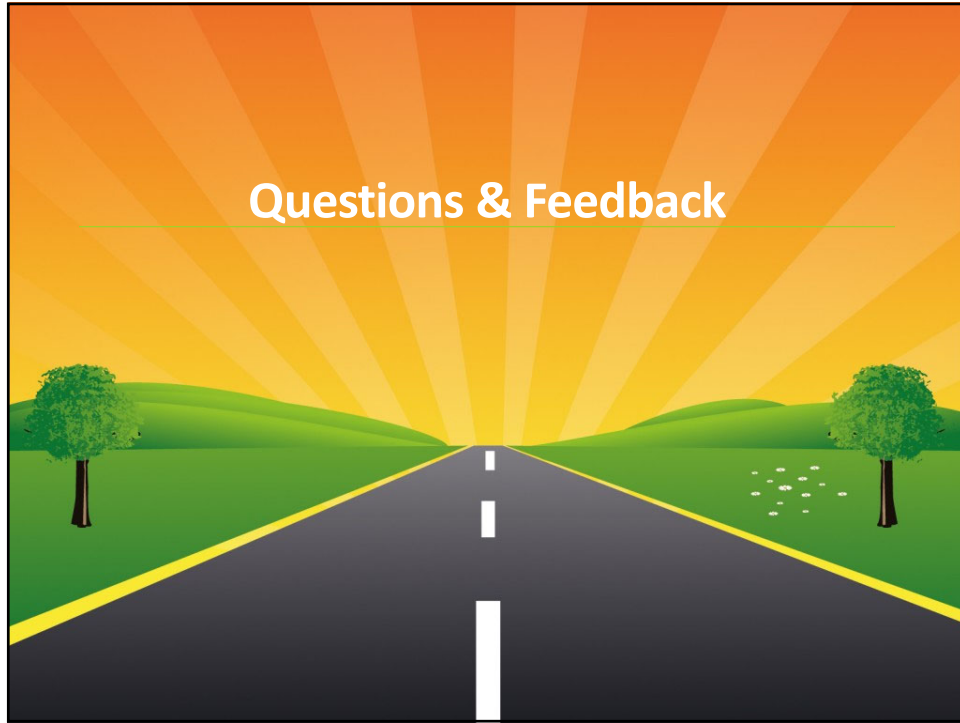


13

Summary

- Present the TSPC an request to increase the amount of long-term parking in the Broadway Downtown
- TSPC to obtain community feedback:
 - The proposed option on utilizing Lot R and space quantities
 - Determining the parking duration and space quantities related to Lot S
 - Support for the removal of five on-street spaces along California Drive (Rhinette to Juanita) to address queuing issues.
- Obtain a TSPC motion for the above items

14



15



16