



1

Meeting Goals

- Present the TSPC with an update on the Old Bayshore Highway Complete Streets Project
- Obtain preliminary feedback
- Show project development process

2

Background

- In 2022, the City completed a “corridor study” along Old Bayshore Highway
- The study provided the following:
 - Documented existing conditions
 - Outlined the outreach process including design alternatives
 - Determined a “preferred alternative” with both community and Council support.
 - Construction costs of preferred alternative to be around \$16 million
- Staff began seeking grant funds to advance the design alternative

3

Background

Old Bayshore Highway Complete Street

• Project Overview

- Key north–south access route serving SFO, hotel district, and US-101.
- Direct connection to Millbrae Transit Center (Caltrain, BART, SamTrans).
- Corridor lacks safe, continuous pedestrian and bicycle access; recurring flooding further limits mobility.
- Supports thousands of workers, travelers, and visitors moving between SFO, hotels, and regional transit.

Location Map



4

Project Limits



5

Project Benefits and Impacts

Old Bayshore Highway Complete Street

- Project Benefits
 - Safer pedestrian and bicycle travel through Class IV bikeways.
 - Continuous ADA-compliant sidewalks with upgraded lighting.
 - Improved drainage and stormwater resilience in a flood-prone corridor.
 - Strengthens hotel, airport, and business district access, supporting local jobs.
- Project Impacts
 - Construction impacts limited to the roadway and hotel frontages.
 - Cleaner, more welcoming corridor for workers and visitors.
 - Long-term reduction in collision risk and recurring flooding.

6

Project Benefits and Impacts

Old Bayshore Highway Complete Street

Existing Conditions Image



- Corridor currently auto-oriented with narrow sidewalks.
- Frequent flooding and inadequate lighting.
- High collision locations

Conceptual Rendering



- Two travel lanes + center turn lane.
- Buffered/raised bikeways, widened sidewalks, medians.
- Enhancements at transit stops and crossings.

7

Old Bayshore Midblock Crossing Simulation



8

Grant Funding

Old Bayshore Highway Complete Street

Project Sponsor: City of Burlingame

Current Phase: Planning

Requested Phase(s): Enviro./PA&ED, PS&E, Construction

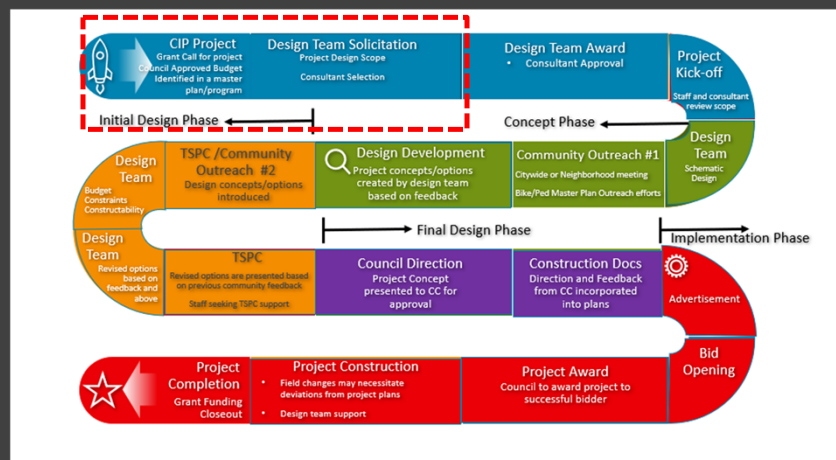
Expected Phase Completion 2028

Total Fund Requested \$19,200,000

Total Estimated Project Cost \$24,000,000

9

Project Development Process



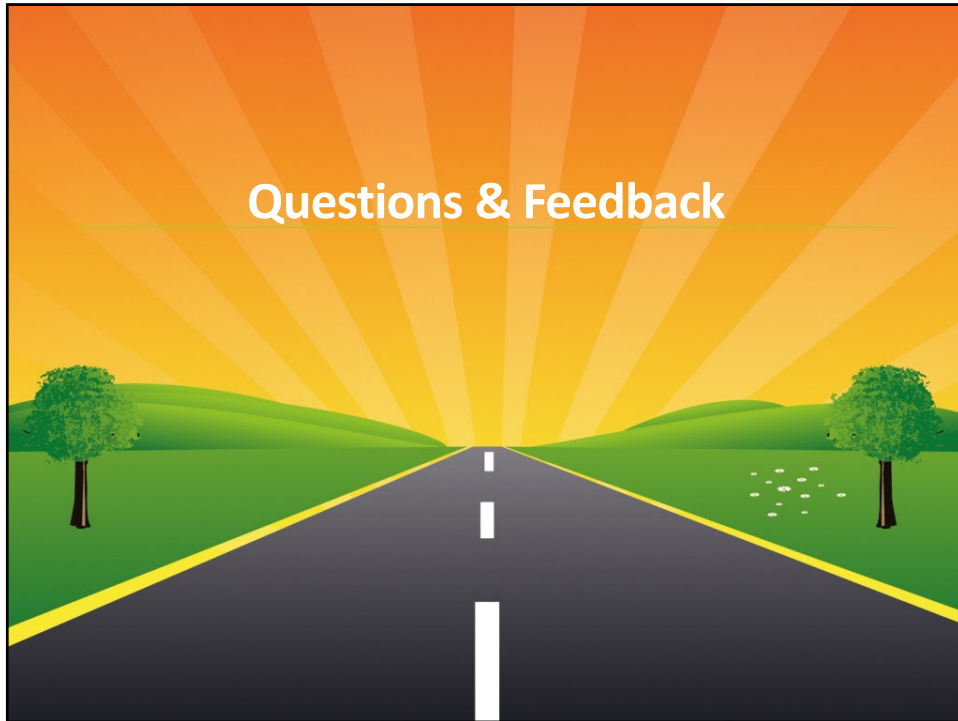
10

Summary

- Present the TSPC with an update on the Old Bayshore Highway Complete Streets Project
- Obtain preliminary feedback
- Show project development process
- Staff to complete “request for proposal” process
- Staff to select design team
- Design team to generate revised project concept
- Obtain community feedback on revised concept
- Shift into the design phase.
- Shift into the Construction phase

11

Questions & Feedback



12