



101 Corridor Connect Program Update

City of Burlingame Traffic, Safety, & Parking Commission (TSPC)
April 9, 2026



1

Overview

- 101 Corridor Connect
 - 101 Multimodal Strategies
 - Active 101
- Local Priority Projects
- Mini-Grant Program



2

San Mateo County Transportation Authority (SMCTA)

- **Plans, funds, and delivers** transportation programs and projects throughout San Mateo County
- **Manages funding** from voter-approved local sales tax (Measure A and Measure W)



A dark blue horizontal banner. On the right side, there is a large, light blue circular logo containing the number "101". In the center of the banner, the text "101 CORRIDOR CONNECT" is written in white, bold, uppercase letters.

WHAT IS 101 CORRIDOR CONNECT?



- A collaborative program to identify and prioritize **congestion management** projects along US 101 in San Mateo County.
- It looks **beyond just highway infrastructure** and considers the mobility needs of the corridor as a whole.
- **Program partners** include Caltrans, cities, transit agencies, San Mateo County, and C/CAG.

5

Program Goals



Safe

Enhance safety for users of the transportation network.



Connected

Connect people to the places they need to go.



Sustainable

Improve air quality and reduce emissions.



Inclusive

Increase access for underserved communities.

6

6

101 Corridor Connect Outcomes

- Identifies regionally significant projects
 - Impactful projects that are community supported
- CMCP for 101 Corridor
 - Projects are eligible for Solutions for Congested Corridors Program funding
- Positions projects to be more competitive for funding, including SMCTA programs



7



101 Corridor Connect Working Groups

North County	Mid County	South County
<p>Local Jurisdiction Staff Brisbane, South San Francisco, San Bruno, Millbrae, San Mateo County</p> <p>Transit Agency Partners Caltrain, BART, SamTrans, San Francisco Bay Ferry</p> <p>Stakeholders Commute.org, Caltrans, C/CAG, MTC, SFO</p>	<p>Local Jurisdiction Staff Burlingame, San Mateo, Foster City, Redwood City, Belmont, San Carlos, San Mateo County</p> <p>Transit Agency Partners Caltrain, SamTrans</p> <p>Stakeholders Commute.org, Caltrans, C/CAG, MTC</p>	<p>Local Jurisdiction Staff San Mateo County, Menlo Park, Redwood City, East Palo Alto, Atherton</p> <p>Transit Agency Partners Caltrain, SamTrans</p> <p>Stakeholders Commute.org, Caltrans, C/CAG, MTC, SFO</p>

8

8

A large white '101' is centered within a dark blue circle, which is partially cut off by the right edge of the slide.

MULTIMODAL STRATEGIES

North County | Mid County | South County

9

9

What is a Multimodal Strategy?

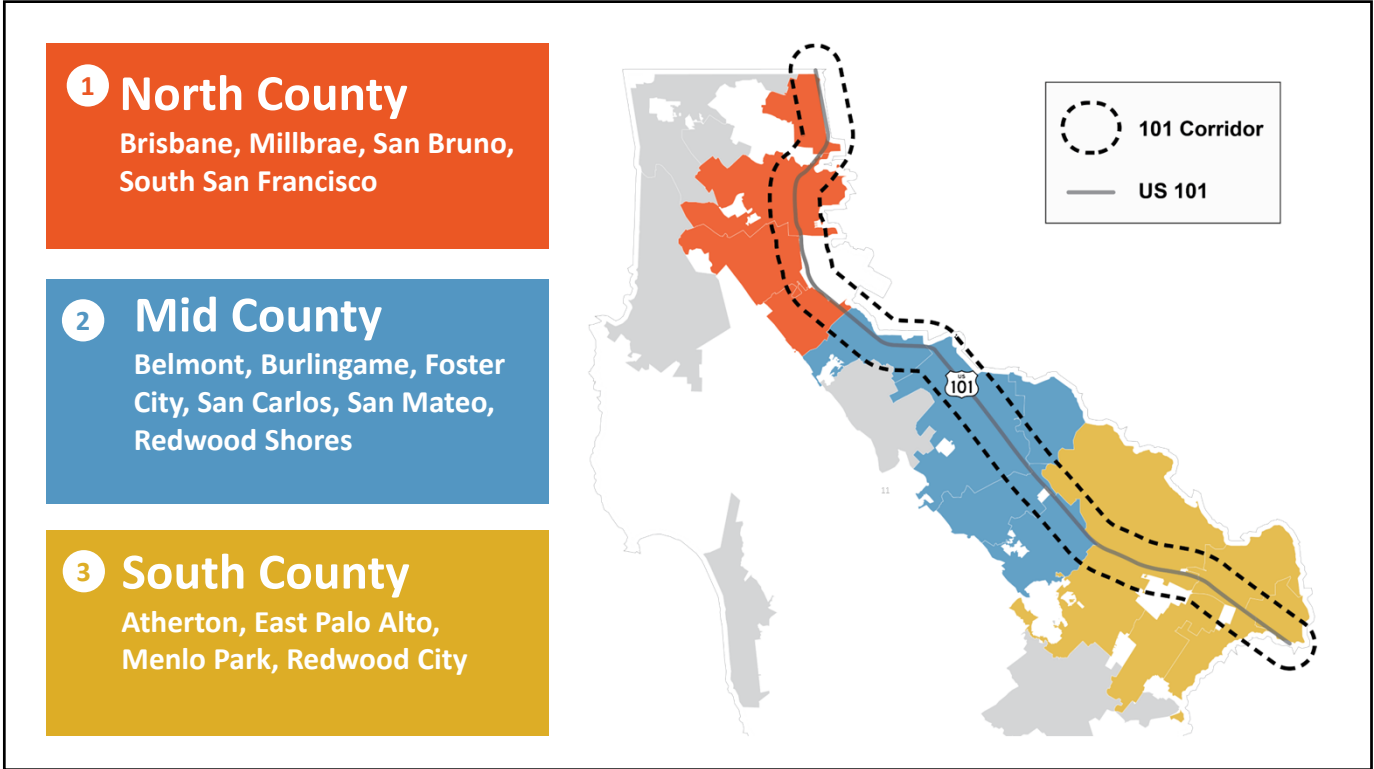
The Multimodal Strategies are planning documents that identify and prioritize needed projects in San Mateo County.

Multimodal Strategies were developed for the entire 101 corridor as the first initiative of 101 Corridor Connect.

Projects include highway, active transportation, transit, other types of improvements.

10


10



11

Community/ Stakeholder Engagement Components

- Project webpage
- Multilingual factsheet and Frequently Asked Questions document
- Press release
- Online survey
- Interactive recorded presentation
- Interactive mapping (available online and at in-person events)
- Pop-up activities at local events
- Small group meetings with community-based organizations
- Temporary signs at bus stops



12

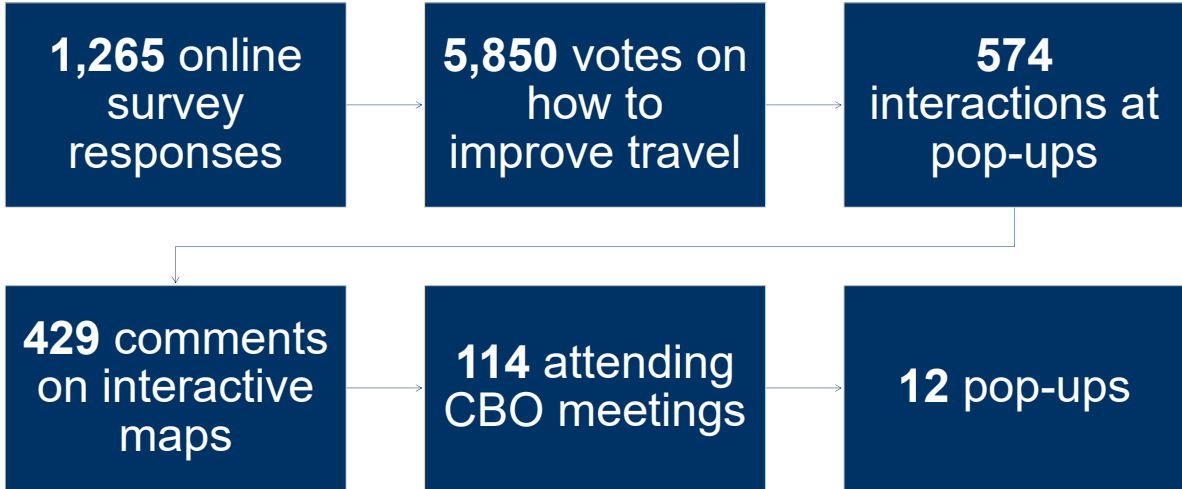
Community & Stakeholder Engagement Pop-Ups



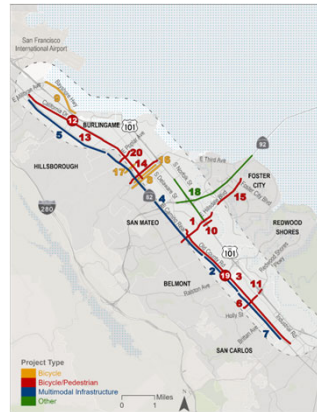
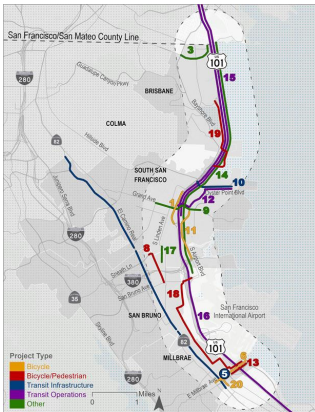
Community & Stakeholder Engagement Meetings with CBOs



Multimodal Strategies Engagement Statistics



15



Priority Projects

After the scoring and weighting, projects were ranked with the **top 20 highest scoring projects.**

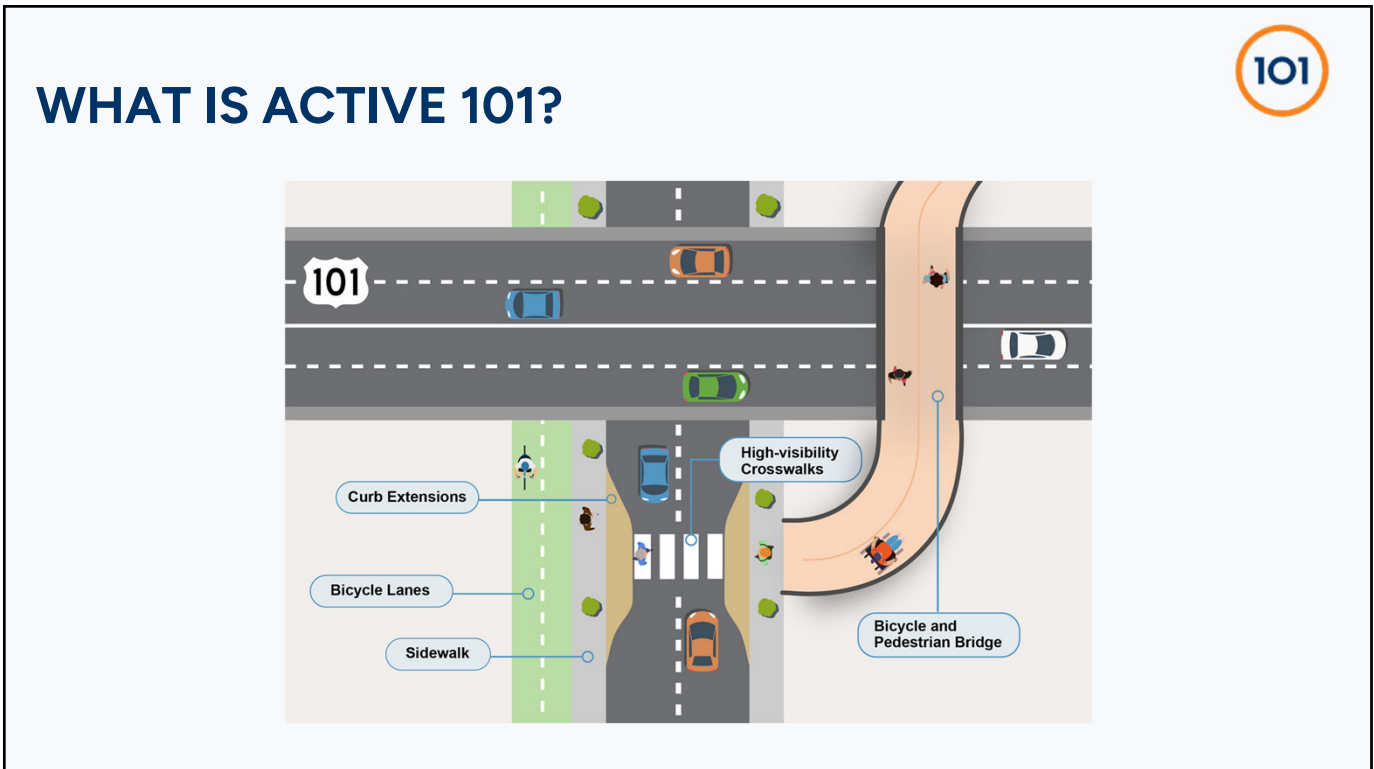
16

16

ACTIVE 101: US 101 SAN MATEO COUNTY CROSSINGS IMPROVEMENT PLAN

17

17



18

STUDY AREA



19

FALL 2024 COMMUNITY ENGAGEMENT

6 Multilingual Pop Up Events

26 Presentations To Stakeholders

270+ Responses To The Online "Fund It" Activity

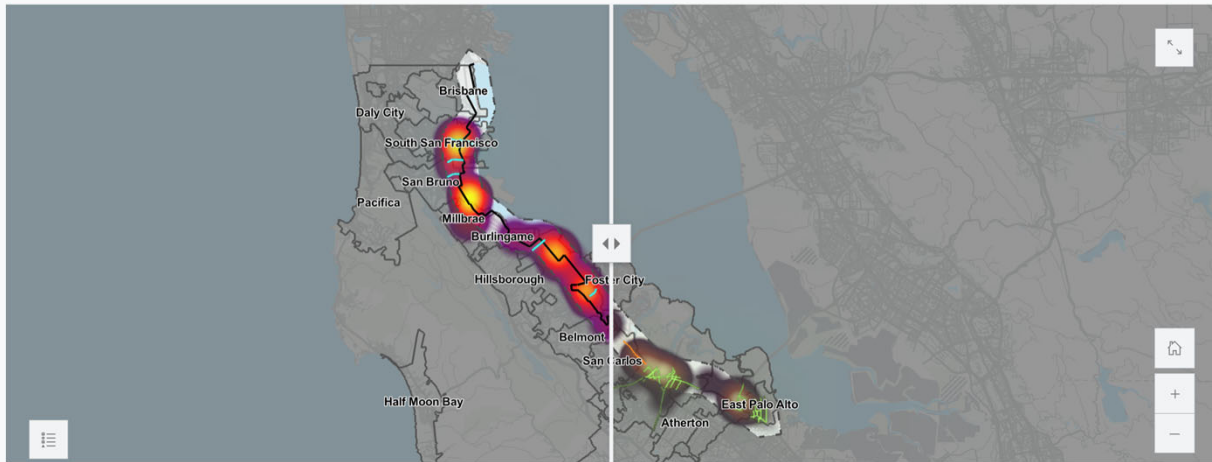


20



CREATING THE CORRIDOR

The North-South Corridor Alignment was created by connecting City-identified projects with areas where the community identified concerns.



21

Active 101 Priority Network: Key Benefits at Full Build Out

The Active 101 Priority Network consists of a system of existing and proposed bicycle and pedestrian projects along and across US 101 that create a contiguous north-south corridor and east-west crossings. Once fully connected, the Priority Network will include:

- Approximately **42 total miles** of access for people walking, biking, and rolling
- Approximately **7.5 miles** of critical east-west connections
- Approximately **26.6 miles** of new or upgraded bicycle infrastructure

- Safety**
Approximately **7.5 miles** of the pedestrian High Injury Network (HIN) and **6 miles** of the bike HIN are included in the Priority Network and will be improved through its implementation.
- Connectivity**
16 US 101 crossings will be improved or constructed for people walking, biking, and rolling.
- Sustainability**
Vehicle miles traveled (VMT) is estimated to decrease by **12.7 million miles** over the project lifetime. **Greenhouse gas emissions** are estimated to reduce by **4,377 metric tons** of CO₂e.
- Inclusivity**
>138k more people,¹ including **>50k** living in **disadvantaged communities**,² will be within a **10-minute walk** or a **3-minute bike ride** to a high-quality bike facility³ along the Priority Network.

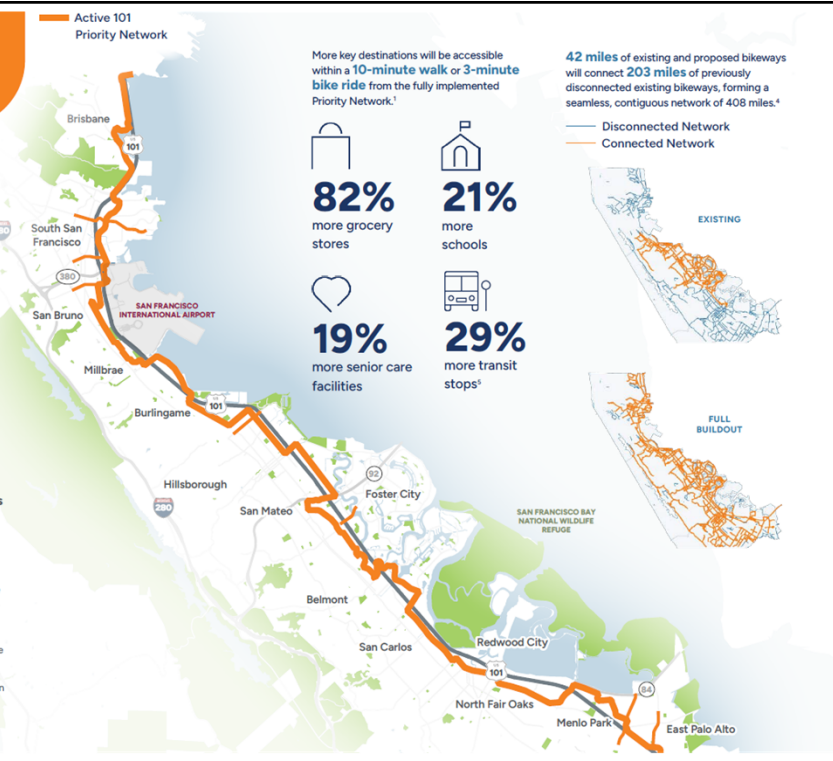
1 Calculated using a 1/2-mile buffer (approximately a 10-minute walk or 3-minute bike ride) from the Priority Network. Increases are relative to existing conditions.
 2 Disadvantaged communities include Equity Priority Communities (EPCs) and Caltrans Equity Index (EQI) communities. EPCs are census tracts identified by the Metropolitan Transportation Commission as areas that have a significant concentration of underserved populations. Caltrans Equity Index (EQI) communities are census tracts identified by Caltrans as experiencing transportation-based disadvantages.
 3 For analysis purposes high-quality bicycle facilities are defined as Class I (shared-use paths) and Class IV (protected bike lanes).

More key destinations will be accessible within a **10-minute walk** or **3-minute bike ride** from the fully implemented Priority Network.¹

- 82%** more grocery stores
- 21%** more schools
- 19%** more senior care facilities
- 29%** more transit stops²

42 miles of existing and proposed bikeways will connect **203 miles** of previously disconnected existing bikeways, forming a seamless, contiguous network of **408 miles**.⁴

— Disconnected Network
— Connected Network




22

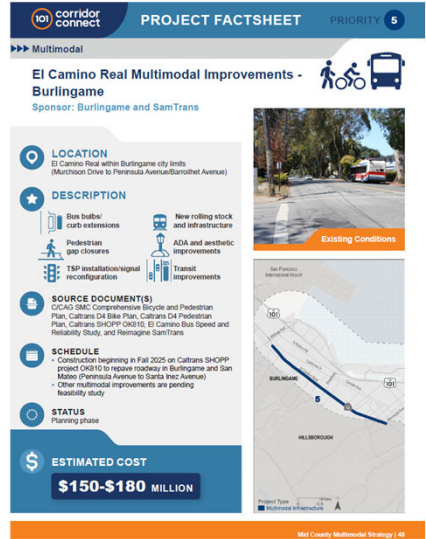
101

101 Corridor Connect Program Next Steps

Priority Multimodal Safety and Congestion Relief Projects Burlingame

- Multimodal Strategy
 - El Camino Real
 - Old Bayshore Highway
 - Broadway Grade Separation
 - California Drive/North San Mateo Drive
- Active 101
 - Broadway
 - Rollins Road
 - Cadillac Way
 - Carolan Avenue
 - Howard Avenue
 - Howard Avenue/Humboldt Street





PROJECT FACTSHEET PRIORITY 5

El Camino Real Multimodal Improvements - Burlingame
Sponsor: Burlingame and SamTrans

LOCATION
El Camino Real within Burlingame city limits (Marathon Drive to Peninsula Avenue/Sanibel Avenue)

DESCRIPTION
 Bus bays/ curb extensions
 Pedestrian way closures
 TSP installation/signal reconfiguration
 New rolling stock and infrastructure
 ADA and aesthetic improvements
 Transit improvements

SOURCE DOCUMENT(S)
 CUCAD SMC, Comprehensive Bicycle and Pedestrian Plan, Caltrans DA Site Plan, Caltrans DA Pedestrian Plan, Caltrans SHOPP O&G10, El Camino Bus Speed and Reliability Study, and Reimagine SamTrans

SCHEDULE
 - Construction beginning in Fall 2025 on Caltrans SHOPP project O&G10 to repave roadway in Burlingame and San Mateo (Peninsula Avenue to Santa Inez Avenue)
 - Other multimodal improvements are pending feasibility study

STATUS
 Planning phase

ESTIMATED COST
\$150-\$180 MILLION

Mid County Multimodal Strategy | 48

Mini Grant Program (\$4M)



101 Corridor Connect Mini-Grants

- 
Funding for priority projects
 - Multimodal corridor study
 - Conceptual design alternatives
 - Community engagement
- 
Available Funding
 - \$750,000 per project
 - Up to \$1M for multi-jurisdictional projects
 - No local match required
- 
Streamlined Application
 - Letter of Interest including confirmation of staff availability or technical assistance request
 - Site Walk (if selected, must include at least one City Council member)

101 Corridor Connect Mini-Grants



Key Action Items

- Talk with staff and SMCTA about projects
- Apply to mini-grant program
- Participate in site walk if selected
- Reach out to SMCTA with any questions
- SMCTA CBO Bench for engagement



Questions?

Sue-Ellen Atkinson
Manager, Planning and Fund Management
atkinsons@samtrans.com

29