

DRAFT CAPITAL IMPROVEMENT PROGRAM FY 2026-27

May 19, 2026



City of Burlingame



Overview of FY 2026-27 CIP



Parks & Recreation Projects



Building Facilities Projects



Bike, Pedestrian & Traffic Improvements



Parking & Garages



Street Resurfacing Program



Water System Enterprise Projects



Sanitary Sewer System Enterprise Projects



Storm Drainage System Enterprise Projects



City Council Feedback

Summary of Capital Improvement Program

Programs	FY 2026-27 Requests (in thousands)
Parks & Recreation Improvements	\$430
Building Facilities Improvements	\$6,295
Bike, Pedestrian, and Traffic Improvements	\$24,175
Parking Enterprise Funded Projects	\$700
Street Resurfacing Program	\$2,400
Water System Enterprise Fund Projects	\$4,800
Sanitary Sewer Enterprise System Projects	\$5,280
Storm Drain System Projects	\$1,500
TOTAL	\$45,580



Parks & Recreation Improvements

Project Description	General Fund	Total
BSD Synthetic Turf Replacement Fund	\$200	\$200
Cuernavaca Synthetic Turf Replacement	\$150	\$150
Central Irrigation Controller	\$50	\$50
Annual Tree Replacement	\$30	\$30
TOTAL	\$430	\$430



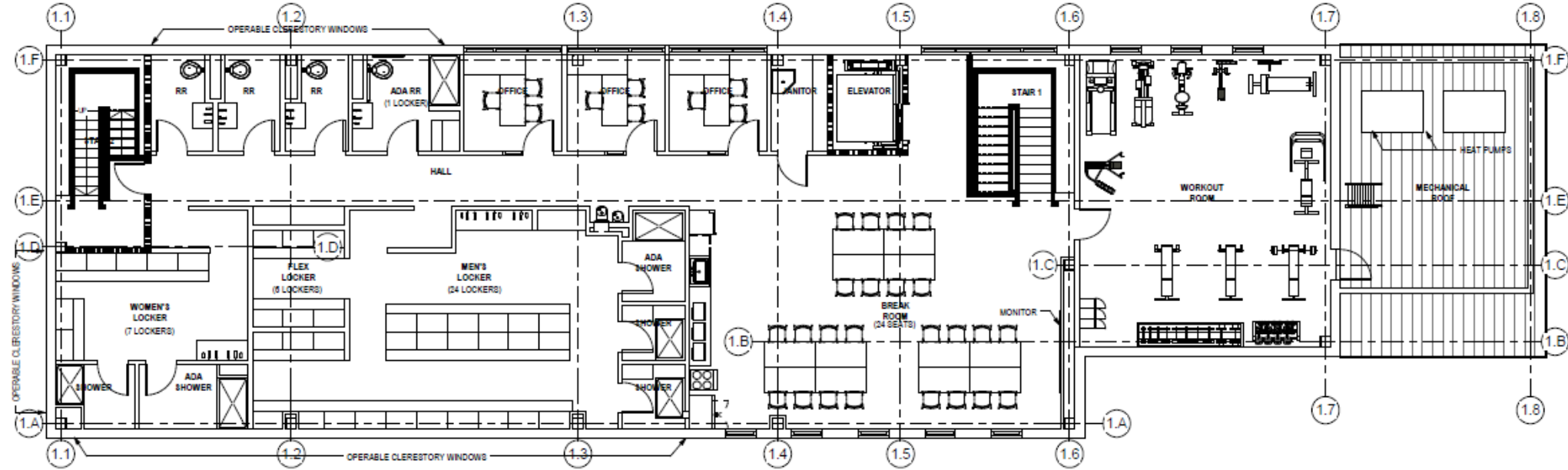
Building Facilities Improvements

Project Description	General Fund	Impact Fees	Grant	Total
Parks Division Corporation Yard	\$1,500	-	-	\$1,500
PD Women's Bathroom Expansion/Locker Room Reno, Ph 2	-	\$1,000	-	\$1,000
Fire Station 36 Misc Improvements	\$700	-	-	\$700
Library Staff Elevator Modernization	-	\$600	-	\$600
Fire Station 34 HVAC Improvements	\$500	-	-	\$500
Fire Station 34 Roof Replacement	-	\$285	-	\$285
Washington Park Grandstands Improvements	-	\$260	-	\$260
City Facilities Roof Replacement Fund	\$200	-	-	\$200
Fire Station 34 Traffic Signal Replacement	-	\$150	-	\$150
Fire Alarm Upgrade at Library	-	\$100	-	\$100
Citywide Minor Building Facilities	\$100	-	-	\$100
Battery Energy Storage System (BESS) at Community Center	-	-	\$900*	\$900*
TOTAL	\$3,000	\$2,395	\$900	\$6,295

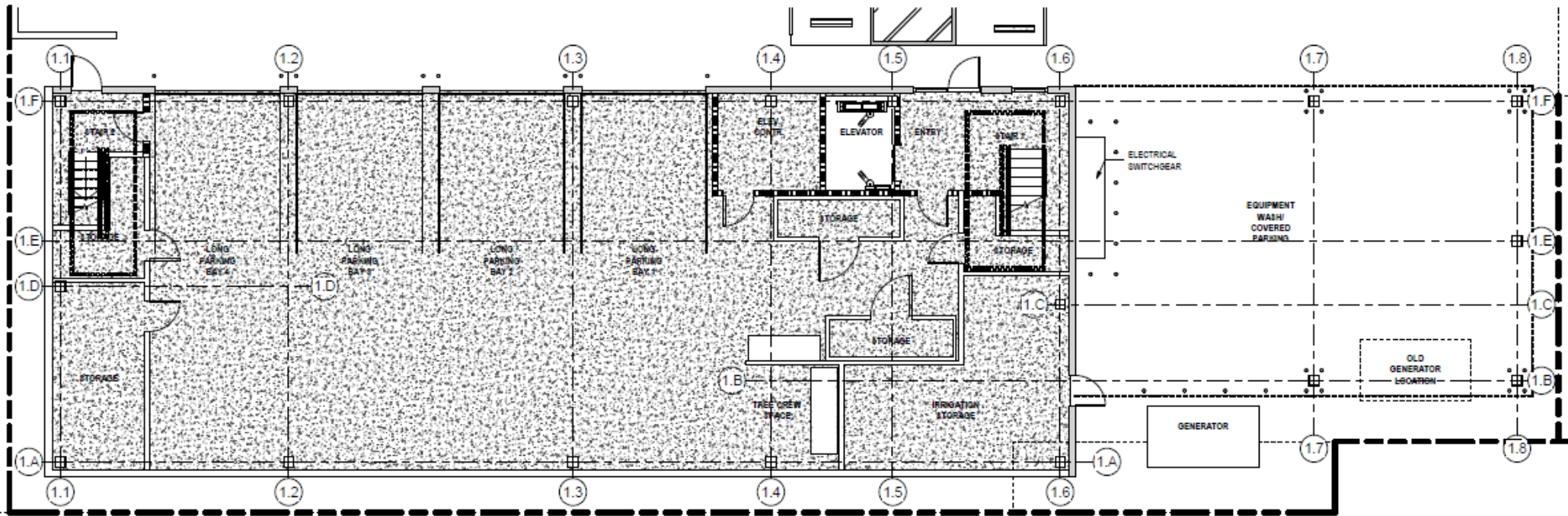
*HUD Grant

Building Facilities Improvements

Parks Division Corporation Yard Preliminary Design & Renderings



2 PRESENTATION - FP02 - SECOND FLOOR PLAN
3/16" = 1'-0"



1 PRESENTATION - FP01 - FIRST FLOOR PLAN
3/16" = 1'-0"



Bike, Pedestrian, and Traffic Improvements

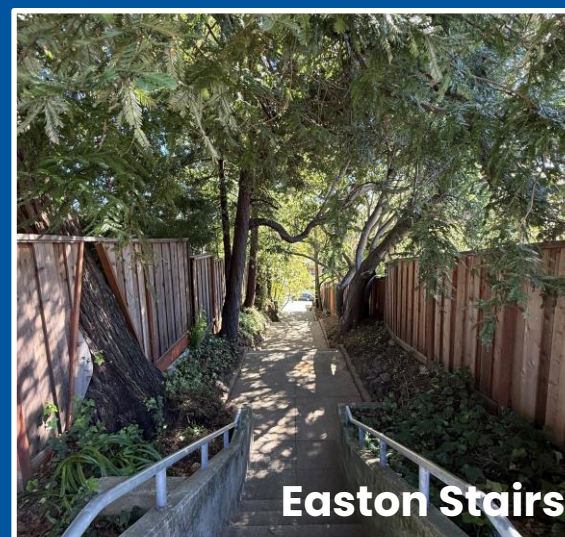
Project Description	General Fund	Gas Tax / SB 1	Measure A&W	Measure I	Grants	Total
Old Bayshore Highway Complete Streets	-	-	\$300	-	\$19,200	\$19,500
Peninsula Corridor Multi-Modal Complete Streets (<i>Design</i>)	-	-	\$175	-	\$1,125	\$1,300
Sidewalk Repair Program & ADA Improvements	-	\$100	-	\$1,000	-	\$1,100
Bellevue/Primrose/ Floribunda Traffic Circles (<i>Design</i>)	-	-	\$300	-	-	\$300
California Drive Bike and Ped Improvements - Phase 3 (Burlingame to Peninsula)	-	-	\$300	-	-	\$300
Chapin Complete Streets Improvements (<i>Design</i>)	-	-	\$300	-	-	\$300
California Drive Signal Modifications @ Howard & Bayswater	-	-	\$300	-	-	\$300
Citywide Traffic Calming Improvements	-	-	\$275	-	-	\$275
Peninsula and Dwight Traffic Signal Project	-	-	\$200	-	-	\$200
Easton Stairs Project (<i>Design</i>)	-	-	\$150	-	-	\$150
South Rollins Road Traffic Calming	-	-	\$150	-	-	\$150
Citywide Pedestrian Improvements	-	-	\$100	-	-	\$100
Murchison, Trousdale, and Davis Bike Project	-	-	\$100	-	-	\$100
Traffic and Transportation Studies	-	-	\$100	-	-	\$100
TOTAL	\$0	\$100	\$2,550	\$1,000	\$20,325	\$23,975

Bike, Pedestrian, and Traffic Improvements

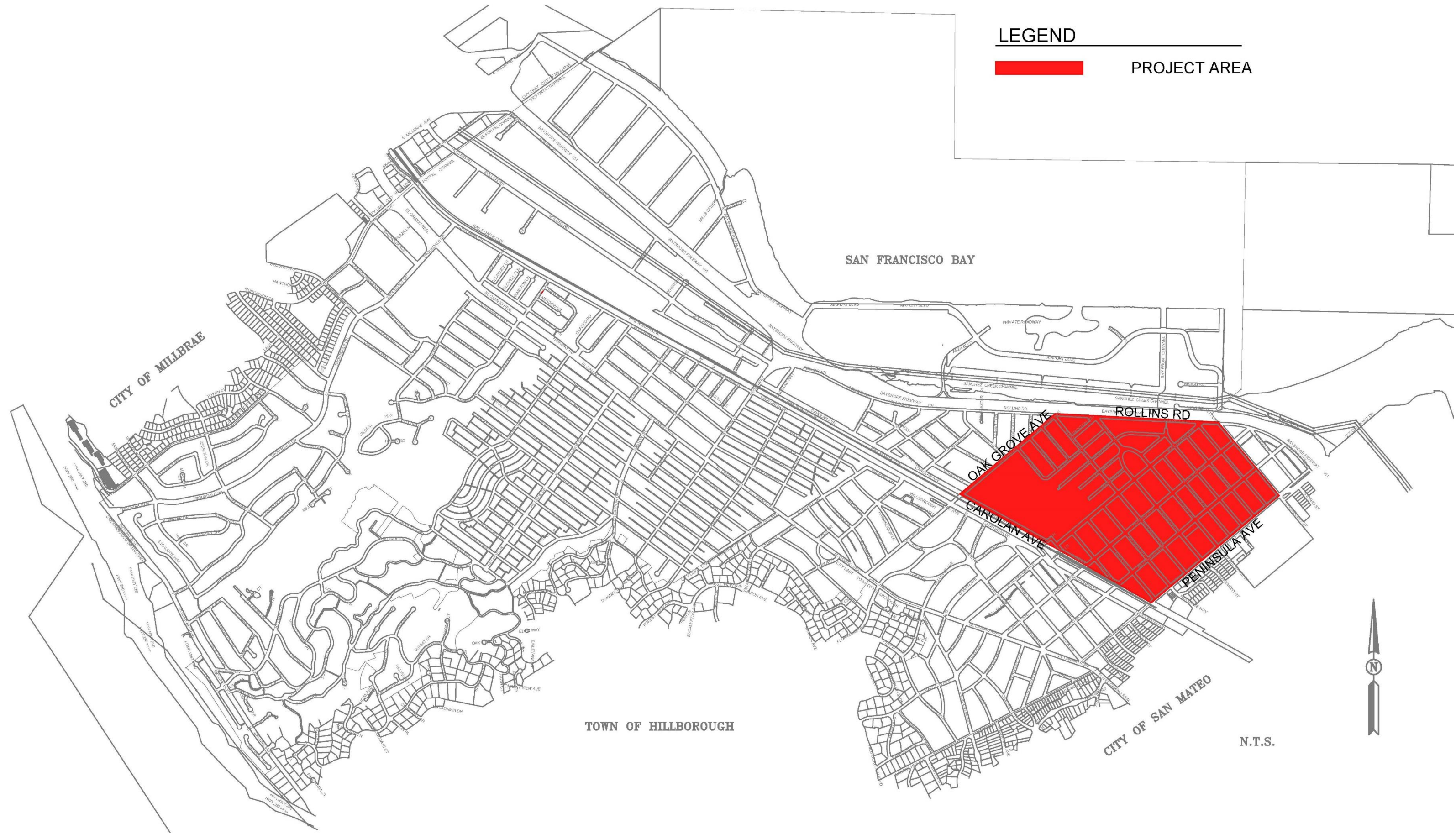
Old Bayshore Highway Complete Streets Before and After Rendering



Bike, Pedestrian, and Traffic Improvements



Sidewalk Repairs & ADA Program



LEGEND

 PROJECT AREA

SAN FRANCISCO BAY

CITY OF MILLBRAE

TOWN OF HILLBOROUGH

CITY OF SAN MATEO

N.T.S.

OAK GROVE AVE

CAROLAN AVE

ROLLINS RD

PENINSULA AVE

Parking & Garages

Project Description	General Fund	Parking Enterprise Fund	Total
Parking Lot Resurfacing (Lot R)	-	\$500	\$500
Highland Garage Concrete Repair Project	-	\$200	\$200
TOTAL	\$0	\$700	\$700



Street Resurfacing Program

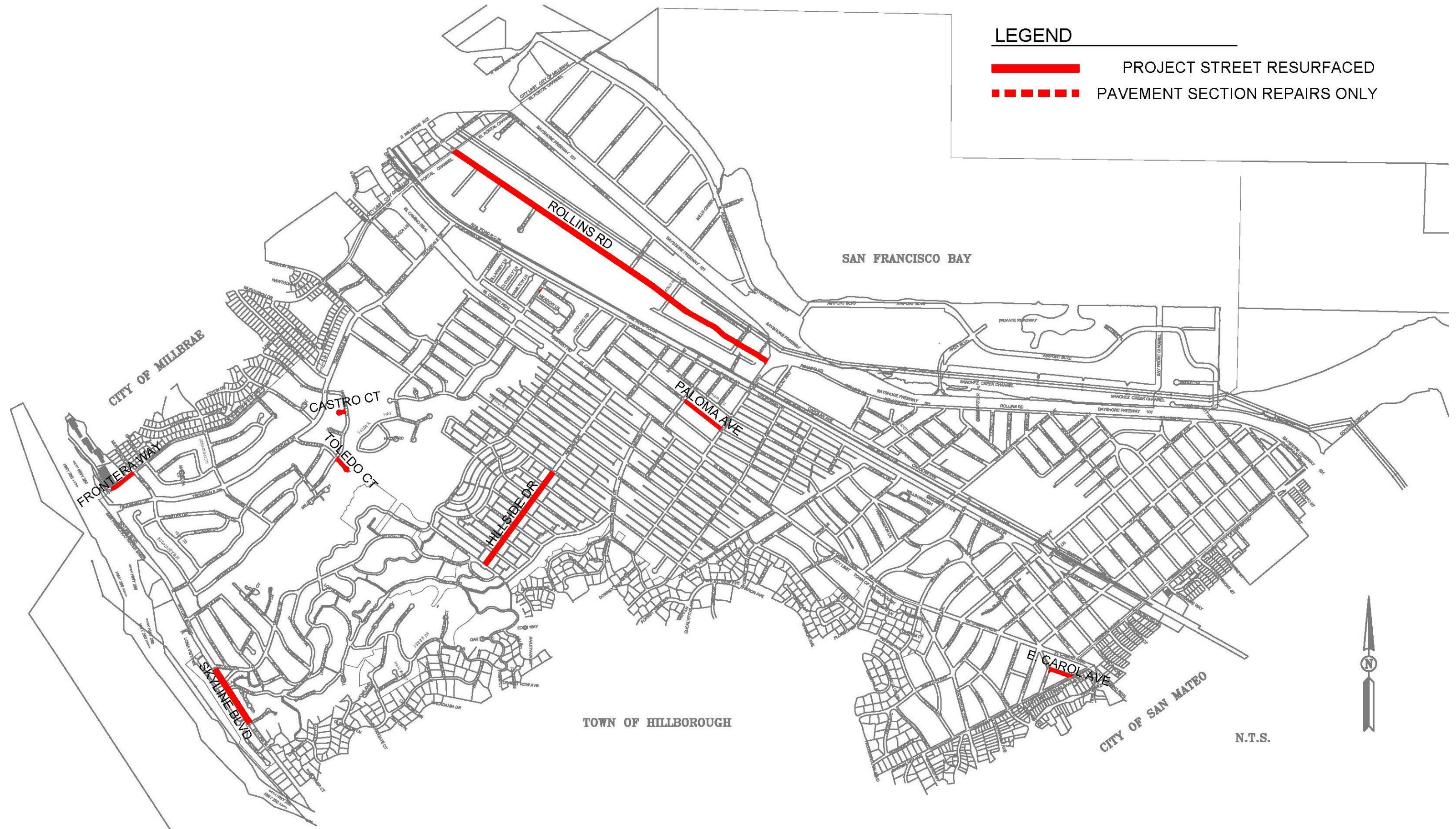
TOTAL COST: \$2,400,000

- ➔ **Castro Court** – from Martinez Drive to End
- ➔ **East Carol Avenue** – from Barroilhet Avenue to Carol Avenue
- ➔ **Frontera Way** – from Vallejo Drive to Hunt Drive
- ➔ **Hillside Drive** – from Alvarado Avenue to Vancouver Avenue
- ➔ **Paloma Avenue** – from Broadway to Lincoln Avenue
- ➔ **Skyline Boulevard** – from South City Limits to Hillside Drive
- ➔ **Toledo Court** – Martinez Drive to End
- ➔ **Rollins Road** – from North City Limits to Broadway (*The North*

Rollins Road Bike and Pedestrian Project will leverage the funding for street resurfacing program to ensure a high-quality outcome and longer pavement life cycle.)



Street Resurfacing Program

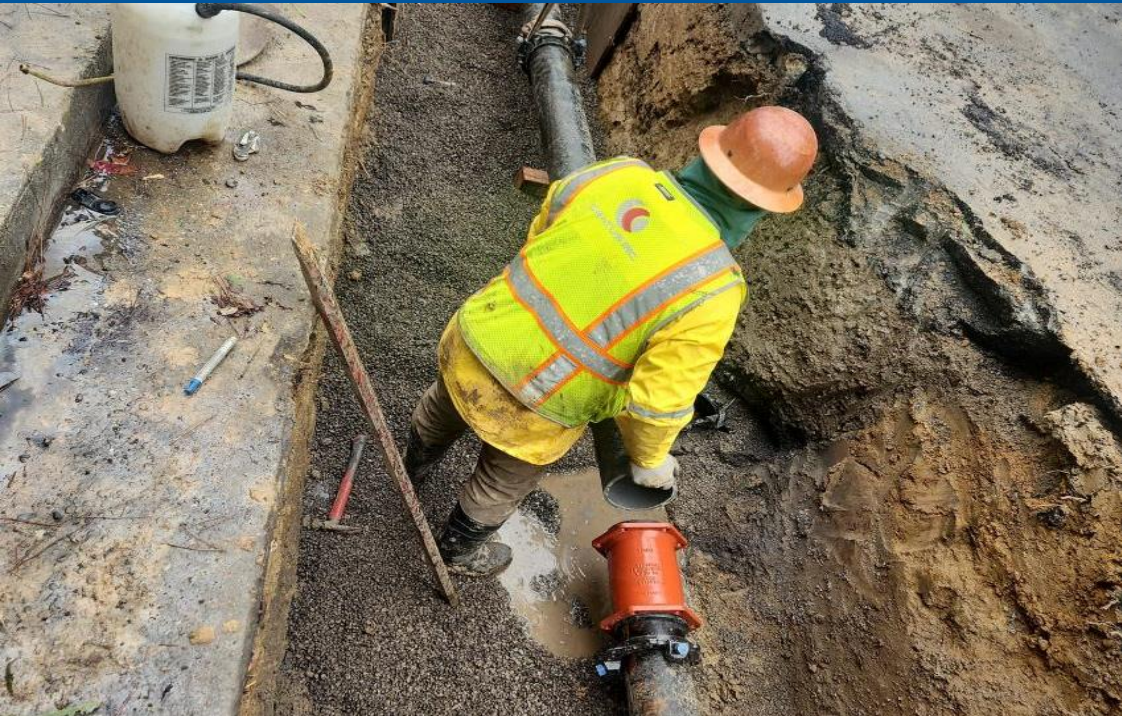




Potable Water, Sanitary Sewer, and Storm Drain Systems



Water System Enterprise Fund Projects for FY26-27



Project Description

Total

East Burlingame Terrace – Easton Addition & Burlingame Terrace Phase 2

\$3,500

Water System Valve Replacement, Phase 3

\$650

Water Meter Replacement Program

\$400

Regional Water Supply Studies and Coordination

\$100

Burlingame Hillsborough Interties Improvement Project

\$100

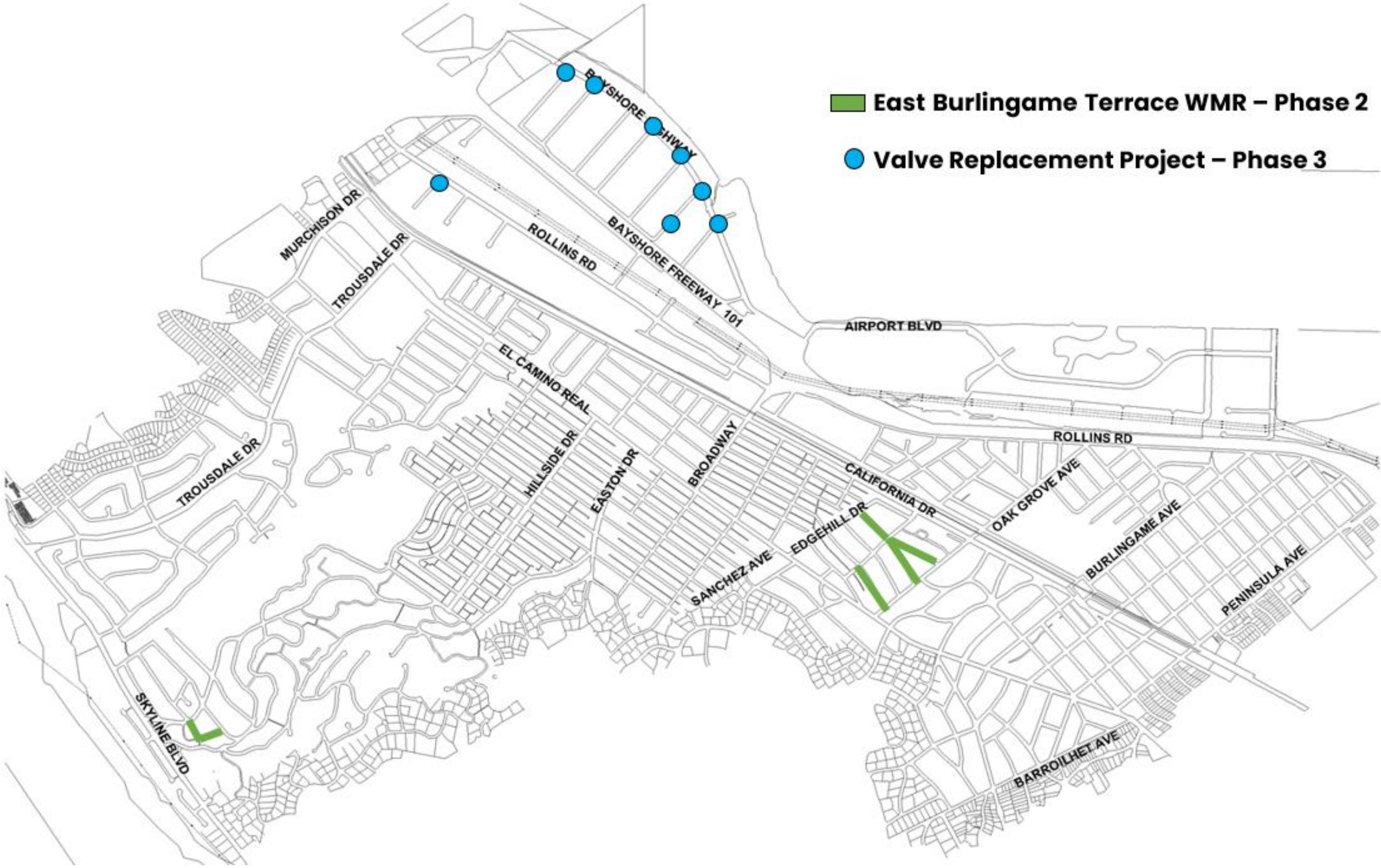
SCADA System Upgrade

\$50

TOTAL

\$4,800

Potable Water System CIP: Map of Proposed Projects



■ East Burlingame Terrace WMR – Phase 2

● Valve Replacement Project – Phase 3

Sanitary Sewer System CIP: Proposed Projects for FY26-27



Project Description

Total

Gilbreth Road Lift Station

\$4,400

Mitten Pump Station Project (*Design*)

\$450

WWTP – Pump Replacement Project

\$200

WWTP – Rollins Road Pump Replacement Project

\$115

WWTP – Bar Screen Replacement Project

\$115

TOTAL

\$5,280

Sanitary Sewer System CIP: Map of Proposed Projects



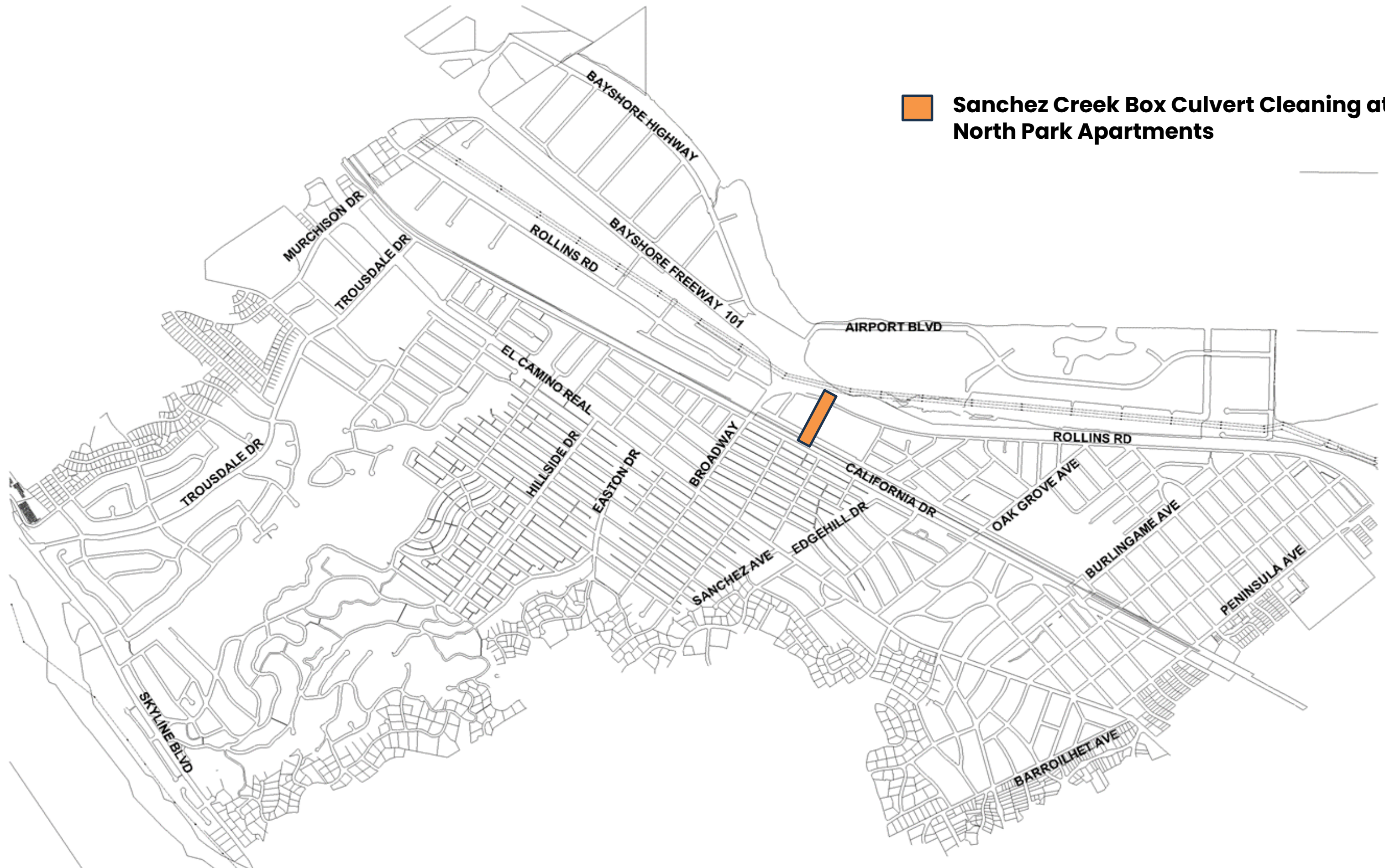
- Gilbreth Road Lift Station**
- Mitten Pump Station Project**
- Wastewater Treatment Plant**
 - Pump Replacement Project
 - Rollins Road Pump Replacement Project
 - Bar Screen Replacement Project

Storm Drain System CIP: Proposed Projects for FY26-27

Project Description	Total
Sanchez Creek Box Culvert Cleaning at North Park Apartments	\$1,500
TOTAL	\$1,500



Storm Drain System CIP: Map of Proposed Projects



 Sanchez Creek Box Culvert Cleaning at North Park Apartments

Proposed CIP Funding by Source

Funding Source

FY 2026–27 Requests
(in thousands)

General Fund	\$3,430
Measure I (<i>\$1M for Sidewalks</i>)	\$1,000
Gas Tax, Measure A, and SB 1	\$5,250
Parking Enterprise	\$700
Impact Fees	\$2,395
Grants/Loans	\$21,225
Water Enterprise Fund Projects	\$4,800
Sewer System Enterprise Fund	\$5,280
Storm Drainage System Projects	\$1,500
TOTAL	\$45,580

Summary of CIP Recommendations

Programs	FY 2026–27 Requests <i>(in thousands)</i>
Parks & Recreation Improvements	\$430
Building Facilities Improvements	\$6,295
Bike, Pedestrian, and Traffic Improvements	\$24,175
Parking & Garages	\$700
Street Resurfacing Program	\$2,400
Water System Projects	\$4,800
Sanitary Sewer System Projects	\$5,280
Storm Drainage System Projects	\$1,500
TOTAL	\$45,580



Council Direction & Feedback

